



©Copyright Paragon Software (Smart Handheld Devices Division).
Dolgoprudny, Moscow region, Russia, 2002.

The PenTrainer program for Pocket PC/Pocket PC 2002

Last modified on the 15-th August 2002

Contents:

About the program	2
Installation.....	2
How to use the program.....	2
Operating modes	3
Testing mode.....	3
Training mode.....	4
Options of the PenTrainer program	5
Uninstallation.....	7
Customer support service.....	7

About the program

PenTrainer is a program designed specially to demonstrate capabilities of the library for recognition separately written letters. You can buy this library together with HWR SDK and use in your applications.

The program is supplied together with the database of standard letter patterns for almost 30 languages. The database is ready for using. If necessary you can retrain the recognition system according to your handwriting style. The program has two operating modes: **Training mode** and **Testing mode**.

NOTE: All screenshots shown in this manual are made from a Pocket PC device. There is no difference in functionality of the program on Pocket PC and Pocket PC 2002 except for the possibility to change zoom of pictures. To change zoom you should open the menu “M | Zoom”. Zoom may be 100%, 150%, 200%, or 300%. Zoom is not available on Pocket PC devices.

Installation

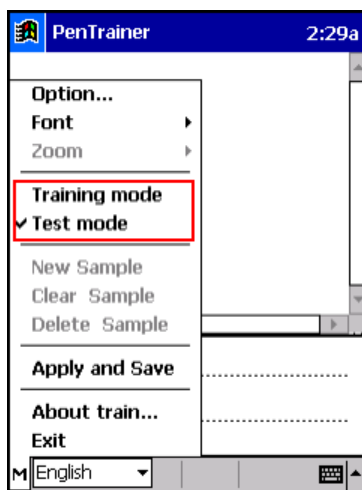
To install the program you should download zip file from our web site and extract it. In the folder “PenReaderL” you will find the following files:

- “pentrainer.exe” - the program that demonstrates the capabilities of the library for recognition separately written letters
- “pprrc.dat” - the data file (the program needs this file to work properly)
- “manual_xxx.doc” – the manual that describes user interface and operating modes of the program.

You should move the “PenReaderL” folder to your device and start the “pentrainer.exe” file. (You may delete “manual_xxx.doc” from your device as it is not appropriate for reading on a pocket device screen – it contains many big screenshots.)

How to use the program

The program has two operating modes. **Training mode** is designed to look through and edit (delete, change, and create) styles of writing. **Testing mode** is designed to monitor quality of handwriting recognition.



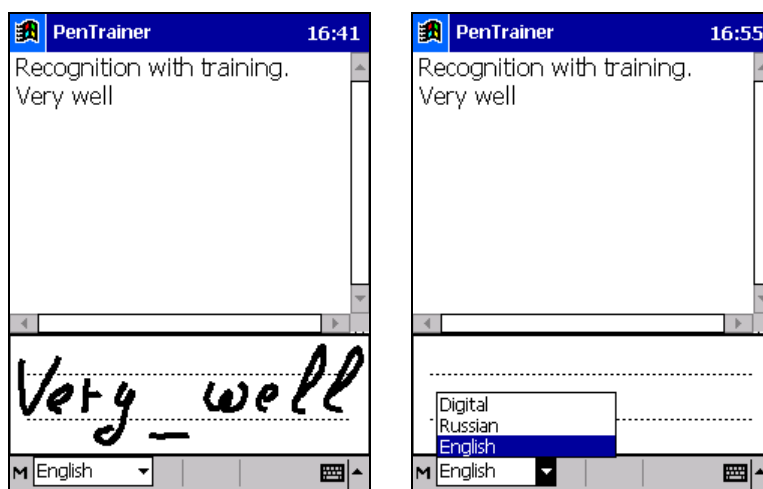
You can switch between operating modes by tapping the menu “M | Training mode” or “M | Test mode”.

Operating modes

Testing mode

Right after start the program is in the testing mode. The window for handwriting is at the bottom of the screen. You should write in the line marked by auxiliary dotted lines. You will see recognized letters in the edit window beginning from the cursor position.

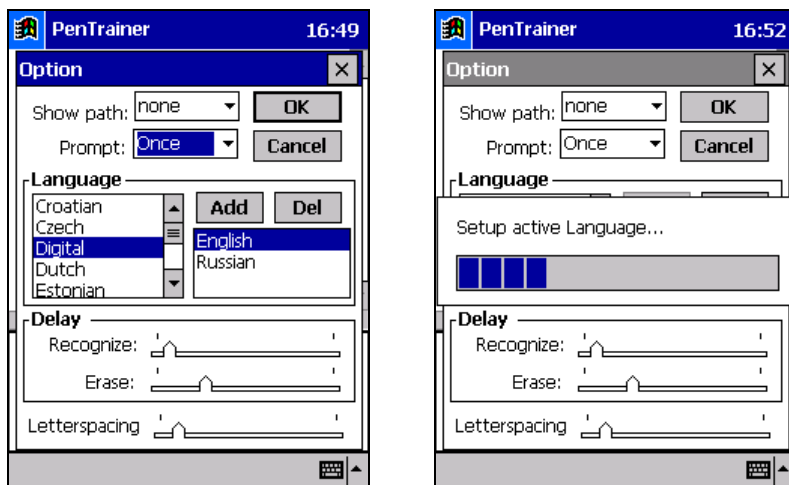
You have a great possibility to compare handwriting recognition quality of PenTrainer with one of any other recognition system installed on your device. Just choose another Input method (appropriate to the program for comparison) in the window of PenTrainer. Then write some words and compare handwriting recognition qualities.



To change current language of recognition, use combined list of active languages.

Though the recognition system can support many languages, there are only three items in the list of active languages for the sake of economy. Switching between languages from the list of active ones happens immediately. Limitation of active languages number is not fundamental. You may order SDK with any number of active languages. This will result only in increasing size of the data base file ("pprsm.dat") and your device will need more free RAM.

You can edit the list of active languages in the dialog "Options", which may be opened by tapping the menu "M | Options...".



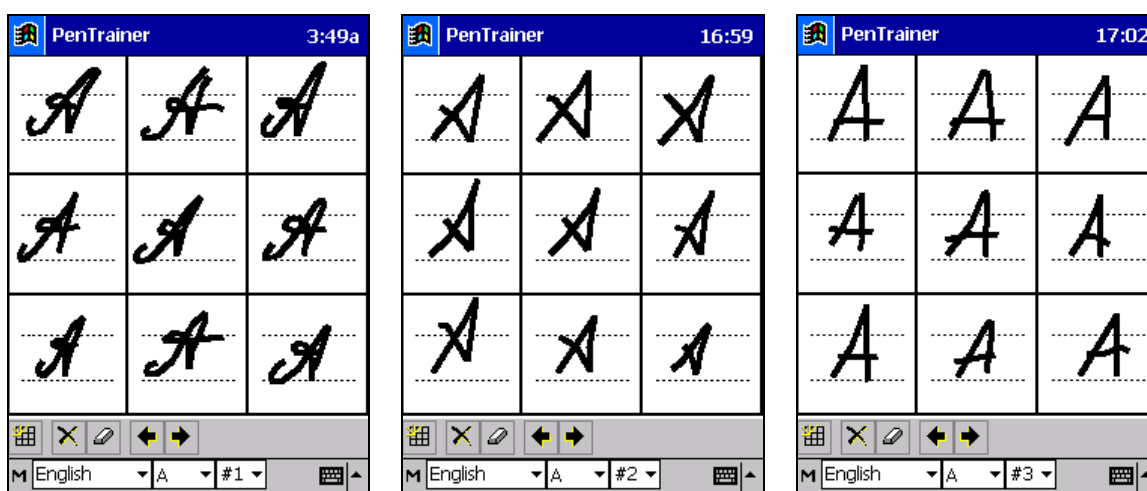
ATTENTION: If you have changed the list of active languages, the handwriting recognition system needs some time for retraining. It will take some minutes until the recognition system ends this operation.

Training mode

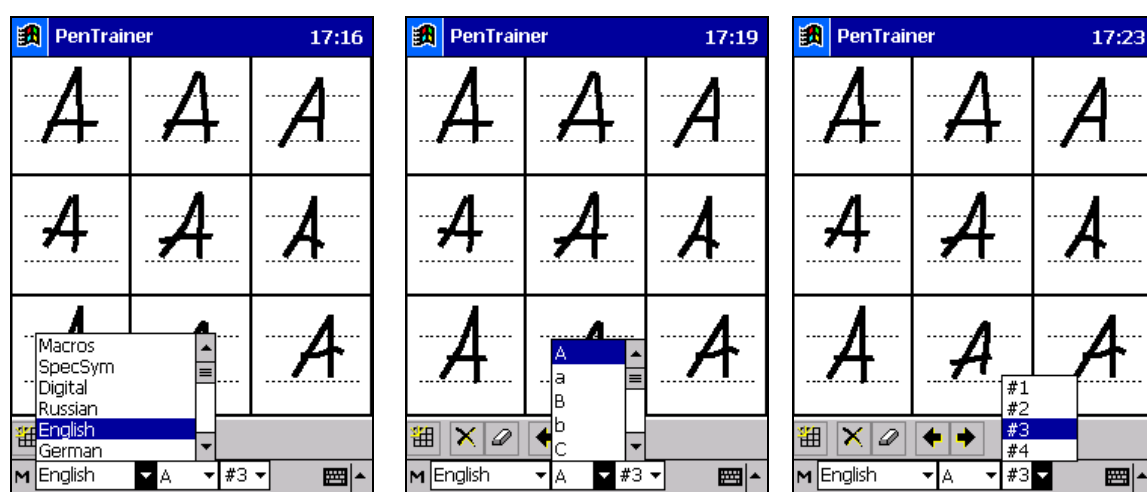
Training mode is the second operating mode. You can switch the program to this mode by tapping the menu “M | Training mode”. Use this mode if you want to look through or edit standard table of letters writing. PenTrainer supports many styles of writing for every letter of any language. Number of styles is limited only by memory available on your device. Style of writing is a table 3×3 for every letter (9 examples how a letter may look like). For instance, in the pictures below you can see three styles of writing for the letter “A” (uppercase letter A). You may add your favorite style of writing for any letter any time you want. Tap the button




to add a new style. In the appeared window write the letter you want 9 times (one letter in every cell).




You can look through all available languages, letters, and styles using combined lists at the bottom of the screen. In the first list you can choose any language you want.





In the second list you can choose any letter from the chosen language. In the third list you can choose number of style (#number) for the chosen letter.

You can look through all the styles, letters, and languages quickly using the buttons .

To create a new style of writing for a letter, you should choose the letter and tap the button . PenTrainer will create a new empty style. Then you should write a copy of the chosen letter in every cell of the table.

If you want to edit an existing style of writing, write new copies of the letter right over existing copies. After the end of editing PenTrainer will remove old writing copies and will save new copies.

You can clear the current style using the button .

Tap the button  if you want to delete completely the current style (all 9 cells).

All functionality is available also in the menu:

- New Sample – create a new style of the letter
- Clear Sample – clear the current style of the letter
- Delete Sample – delete the current style of the letter.

ATTENTION: PenTrainer works with UNICODE. It provides the possibility to work with many languages. But not all the fonts installed on your device support different national encodings. If you see empty squares instead of recognized text or in the list of letters, you should change font in the menu Font.

Having made all the changes you should retrain the program (all the changes will take effect). To retrain the recognition system you should tap the menu item “M | Apply and Save”. If you have tapped this menu item, the recognition system will be retrained and all the changes will be saved in the file “pprsm.dat”. You can cancel all the changes if you replace the file “pprsm.dat” on your device by the file from the installation package.

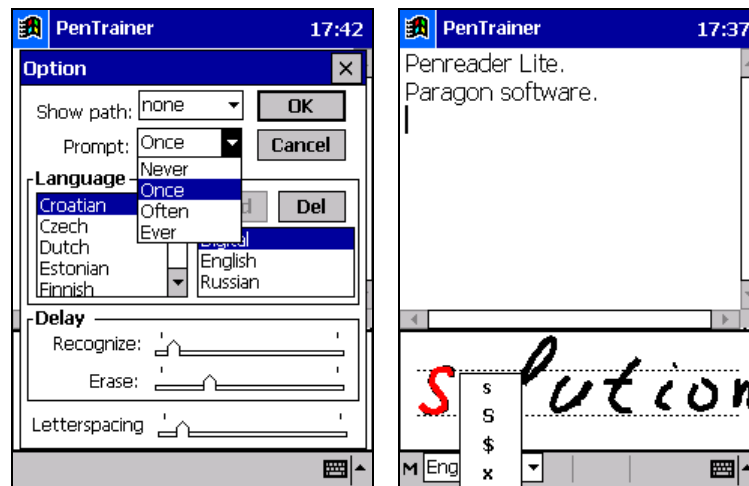
Options of the PenTrainer program

All languages available in the program are listed in the frame “Language”. You can add and delete active languages by tapping the Add and Del buttons. If you have changed the list of active languages (or any other changes) and closed the window, the program will be retrained. It may take a while (from some seconds to some minutes) depending on the processor type of your device.

In the frame “Options” you can set comfortable for you recognition delay (“Recognize”) and delay for erasing the window for handwriting (“Erase”). The recognition delay is a time period from the moment when the customer has raised the stylus to the beginning of the recognition process. The recognition system begins recognition after the recognition delay. Thus the recognition process proceeds in the following way: 1) a customer writes some words in the window for handwriting; 2) the customer raises the stylus from the screen; 3) after recognition delay the written text changes its color (for example, from blue to black); 4) the written text becomes recognized and the window for handwriting becomes clear after the delay for erasing. Sometimes PenTrainer needs more thorough adjustment on the handwriting style of a customer. In the field “Prompt” you can activate the dynamic system retrain mode. This mode allows the recognition system to show a prompt list. Any letter from the list may be taken as a recognition result of a symbol. The customer may confirm one of the recognition results or refuse the choice by tapping outside the prompt list. If the customer has refused the choice, an

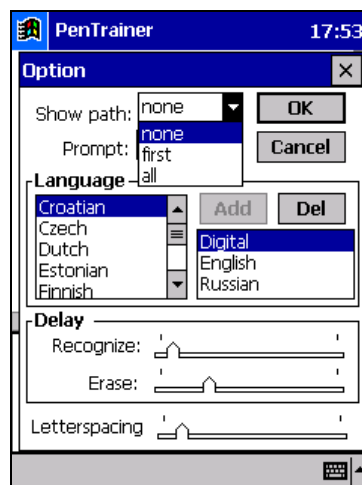
ambiguous symbol will not be recognized at all. There are four modes of the dynamic retraining:

- Never – prompt does not appear
- Once – prompt rarely appears
- Often – prompt often appears
- Ever – prompt always appears.



The slider “Letterspacing” sets letterspacing. Using this parameter the recognition system divides written handwriting text in letters. Maximal letterspacing is equal to average width of letter.

There is the “Slow path” option in the training mode of PenTrainer. This option is designed for the sake of obviousness. When you look at the table of any letter copies (any chosen style), you can see exactly how the letter in every cell of the table was written. The option “Slow path” is used to see slowly how any letter was written.



The “Slow path” option may have three values:

- none – the option is off
- first – the first letter in every table (in the left top corner of the table) will be drawn slowly
- all – all letters in every table will be drawn slowly.

Uninstallation

To remove the PenTrainer program from your device, just delete the “PenReaderL” folder from your device.

Customer support service

If you have any questions concerning PenTrainer, please contact the customer support service of Paragon Software (SHDD): 911@penreader.com

Tel: (095) 408-61-79, 408-76-77

(Telephone line of technical support works from 11.30 till 19.00) *

Web: <http://www.penreader.com>

If you have any questions concerning PenTrainer purchasing and promoting, please write to the marketing department of Paragon Software (SHDD): marketing@penreader.com

Dear customers!

**We would be glad to receive your offers and comments
that help us to increase our programs quality.**

Thanks a lot in advance for your comments and ideas!

* **When calling from outside Russia, please consider time shifts:** Moscow is 11 hours ahead of San-Jose, 8 hours ahead of New York, 3 hours ahead of London, 2 hours ahead of Munich and Paris, 6 hours behind Tokyo. Moscow office operation hours are from 11.30 till 19.00 by Moscow local time.



© Paragon Software (Smart Handheld Devices Division), Dolgoprudny, Moscow region, Russia

15.08.2002