

## **Rough Guides City Maps for Mobile Devices**

From Visual IT [www.visualit.co.uk](http://www.visualit.co.uk)

### **Overview**

These guides are an electronic version of the city guide maps produced by the premier travel publisher, Rough Guides.

Discover and explore the world's cities using full colour interactive linked maps. This PDA version enables you to find all the top spots and key attractions with ease. Information on the city and its sights can be quickly displayed with links to superb photographs and map locations, all in an easy to use interface. If you're travelling to any major city, be sure you don't leave home without these guides on your PDA.

Rough Guides digital map features include:

- Fully scrollable and interactive maps of the city.
- Tap any location to display information and available links.
- Intuitive navigation bar means you are never more than one click away from the information you require.
- Map links allow you to directly link to other maps, photographs, or detailed views.
- Categorised "Find" feature allows you to quickly find any street, place of interest or restaurant etc.
- Categorised "Information" feature provides a wealth of information about the city and places of interest
- One-click "Home" feature keeps the Home map always at hand.
- Zoom function on all maps.

### **Installation**

The download file will be a zip file, and installation will vary depending on the device you have.

Unzip the installation files from the zip download. If you do not have winzip installed on your computer you can download a free evaluation copy from here: <http://www.winzip.com>.

One of the files in the zip will be the installation instructions. Please read these carefully.

### **Registering your application**

The unregistered version will work for one day. When you purchase you will be supplied with a serial or unlock code in your sales receipt email. Please note that the code supplied will be tied to your mobile device in some way, so please ensure you enter the details requested carefully when you purchase.

Palm OS versions require your Palm Hotsync ID / user name.

Pocket PC OS versions require your Pocket PC owner name.

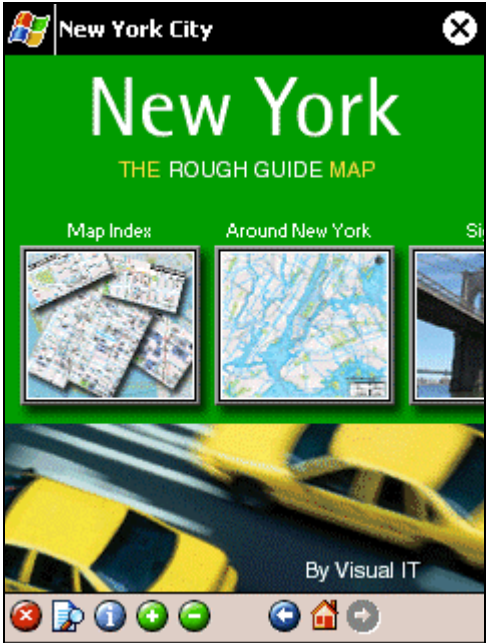
Symbian OS versions require the IMEI of your phone.

Starting the application.

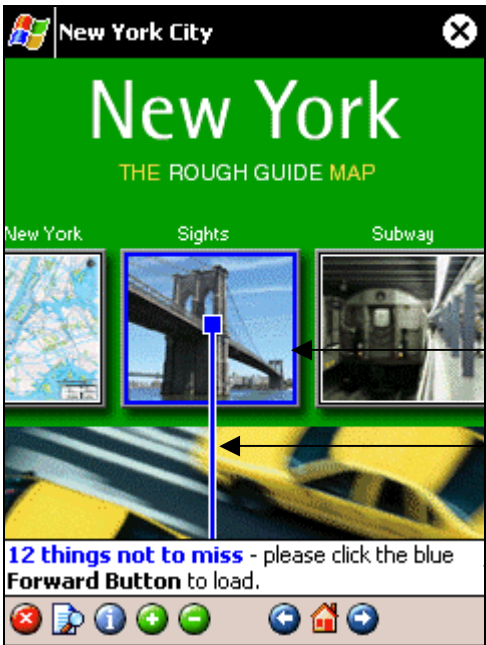


Once installed, an application start icon will appear in the application / program list of your device. Highlight / tap on this icon to start the application.

The Home screen.



On starting the application the first window presented is the home screen. Dragging your stylus left and right across the centre of the screen will scroll a panel of images, each displaying a picture associated to a category or feature available in this city.



Tapping your stylus on one of the panels will highlight the area showing that a link or sub menu is available. Information will also pop up and the blue forward button will go live.

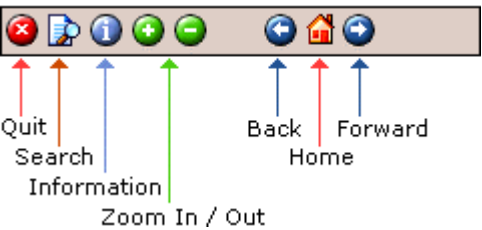
The stylus tap to display the information window is a feature throughout the application. Also, if an area on an image or map is highlighted by a blue surround, this indicates that a link to an associated map or image is live; click the blue forward button to go there.

Blue surround indicates a link.

Blue line indicates what point the information window refers to.

Pop up information window.

The Menu bar



The menu bar is the tool to navigating your way around the application.

**Quit:** Closes the application and exits from memory.

**Search:** Brings up the Browse and Find windows. Here you can search for or browse through a list of places, building, restaurant, etc., and jump directly to the map(s) or information they are located in.

**Information:** Brings up the information window. Here you can find a wealth of categorised information such as opening times of attractions, transportation help and much more.

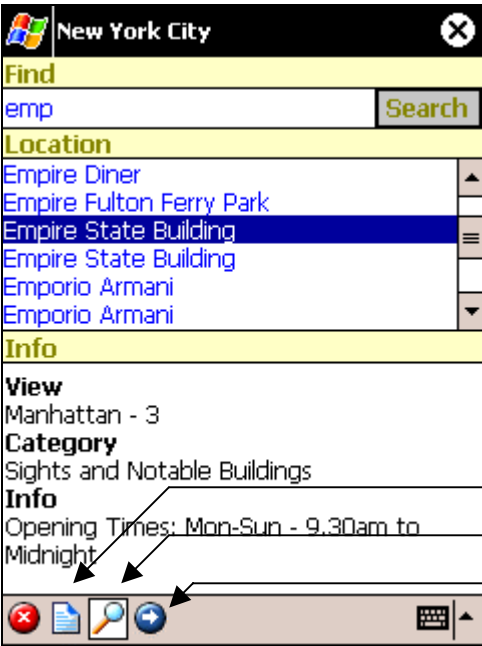
**Zoom In / Out:** These 2 buttons zoom the view in / out.

**Back:** Takes you back one link / view.

**Home:** A one-click jump back to the home screen.

**Forward:** This is the key button to navigating your way around the maps and information; the button goes live as soon as a link is highlighted. Tap on this button to load the linked image, map or information.

Find / Browse Window



Clicking on the 'Search' button brings up the Browse and Find windows. Here you can search for or browse through a list of places, buildings, restaurants, etc., and jump directly to the map(s) or information they are located in.

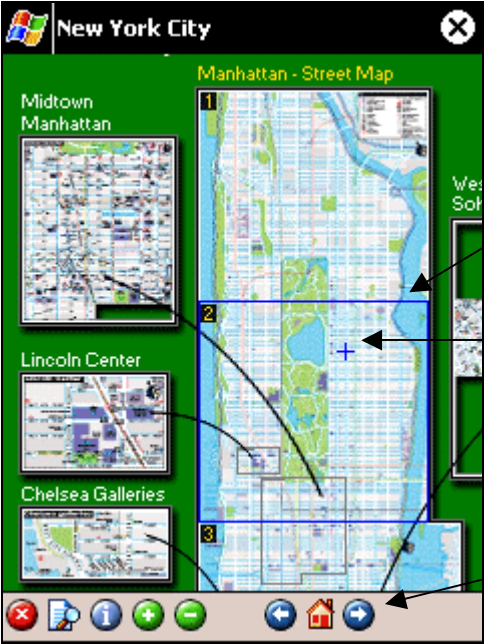
The image on the left shows a find on the letters 'emp' and you can see search results appearing for such things as the Empire State building. Highlighting one of the results brings up details on that find, and the blue forward button goes live to enable you to jump directly to its location on the map or information associated with the find.

Browse option.

Find option.

Forward link button.

Linked maps

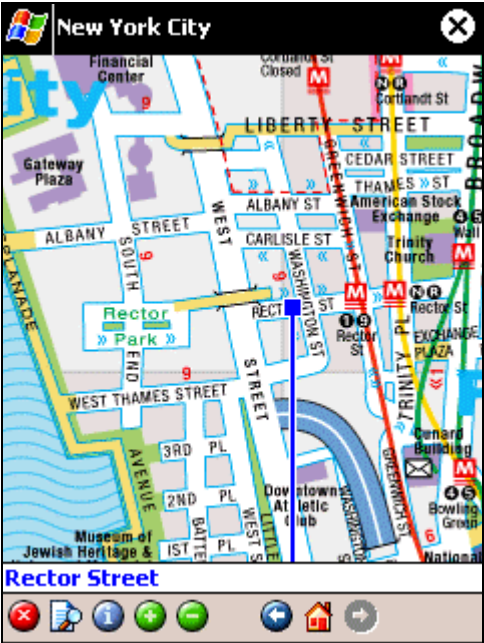


The image on the left shows you an example of an overview map and how further detailed maps are inset and linked.

Blue surround indicates you have tapped on a link to a detailed map.

Target highlights the point at which you want the detailed map to open.

Click the forward button to load the linked map.



Superb detailed fully scrollable maps are the one of the highlights of the application.

Using the 'Find' feature will highlight the street or place of interest.

Tapping on a point on the map will pop the information window. This window can contain a simple street name or may include further details such as attraction opening times, telephone numbers etc.

The option to jump directly to an adjoining map (if available) is provided if you scroll past the limit of one map.



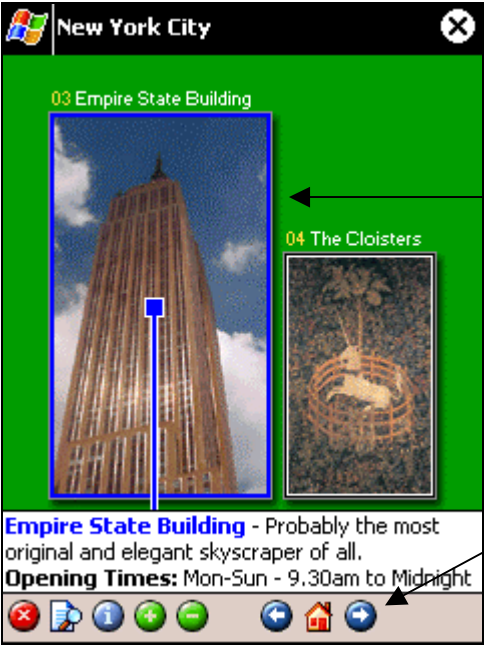
Whenever you tap down on a map and scroll around, a small thumbnail map will appear in the corner. This feature allows you to ascertain your current position in perspective to the whole map or city.

Click the forward button to load the linked map.

Picture Gallery



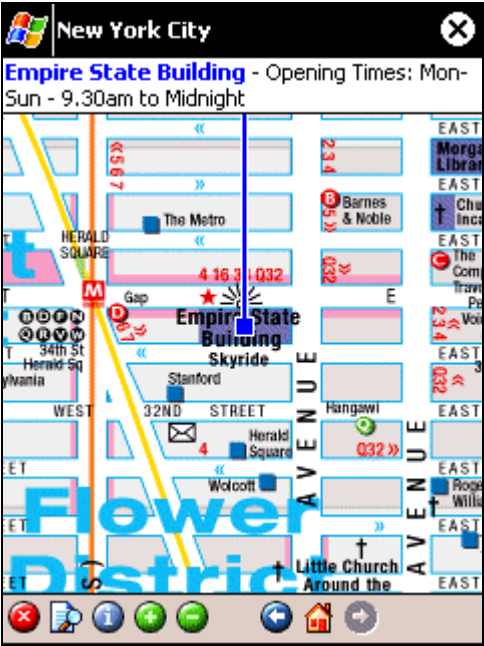
All of the city packs come with superb pictures of the major attractions.



All the images have detailed descriptions and are linked to the maps so you can quickly jump to its map location.

Its has a blue surround so .....

tap to jump to the map



Here's the map location.

Rough Guides interactive city maps are currently available for Palm OS, Pocket PC OS and Symbian UIQ devices and the following cities are due to be released during 2005.

Amsterdam  
Barcelona  
Dublin  
London  
Madrid  
NYC  
Paris  
Washington DC  
Rome  
San Francisco

For further details visit <http://www.visualit.co.uk> or <http://travel.roughguides.com>.

Copyright Visual IT Ltd & Rough Guides.

<http://travel.roughguides.com>

<http://www.visualit.co.uk>