



NoviiRemote

User's Guide

For Pocket PC handhelds

*NoviiRemote Deluxe turns your Pocket PC into a Universal Learning Remote Control!
You can control all of your home entertainment equipment with one easy-to-use program.*

Table of Contents

Introduction	2
1. Getting Started	2
2. Install NoviiRemote Deluxe	3
3. Setup Form	4
4. Remote Screen Form.....	6
5. Add New Device Wizard	7
6. Learning IR Codes	9
7. Hot Buttons Form	11
8. Hard Buttons Form.....	12
9. Preferences for Multiple Rooms	14
10. Button Layouts Editor.....	15
10.1. Button Properties form.....	17
10.1.1. Graphics sub-form	18
10.1.2. Position sub-form.....	18
10.1.3. Action sub-form	18
10.2. Page Editor form.....	23
11. Programming macros.....	23
12. IR Setup	24
13. Troubleshooting	26
14. System Requirements.....	27
15. About NoviiMedia	29



Introduction

NoviiRemote Deluxe is a software program, which turns your Pocket PC computer or smartphone into a universal remote control. It is capable of controlling all of your home entertainment devices, such as home theaters, TVs, VCRs, satellite and cable boxes, etc. right from your handheld.

Unlike to NoviiRemote Classic, which provides you with the six predefined button layouts only, NoviiRemote Deluxe provides you with 16 predefined button layouts (called patterns), and additionally provides you with the possibility to create your own user interface. With NoviiRemote Deluxe you may move, rename or delete any button, create a new button or a new page, change the size and color of buttons, etc.

1. Getting Started

To use NoviiRemote Deluxe you must first install codebases - one codebase for each home entertainment device.

Note. Advanced users may easy create a codebase which controls several home devices simultaneously.

A **codebase** consists of several **pages** showing the virtual remote control interface. Only one page may be displayed on the screen of your handheld at any given time. Each page contains buttons which either send an infrared command controlling your home entertainment device, or which force the program to load another page on the screen.

A codebase is downloaded into the **Remote Screen form** allowing you to click soft buttons and thus control your home devices.

To install codebases, open the Options menu and select the "Add New Device" item. The Add wizard provides you with several ways to create (install) new codebases.

TIPS:

- To open the application menu, just click the "menu" button at the upper left-hand corner of the Remote Screen form. In response the Options and Preferences menu appear at the bottom of the screen.
- If you have used a previous version of NoviiRemote Classic 2.x, use the Add wizard for importing codebases from the Classic format to the Deluxe one.
- If you don't have any codebases in the Classic format, then try to find a suitable codebase in the IR archive. The Add wizard prompts you to select the type of your home device and its brand (manufacturer), and helps you to find the best codebase for controlling the given entertainment device.



- You also can create a new codebase by selecting a pattern, then learning the signals from the original remote control by beaming the signals to your handheld.

To get the most enjoyment from NoviiRemote Deluxe, you can customize the interface. Just launch the Setup form, select the codebase, click the Edit button and create your own interface. You may rename, move and delete buttons, create new buttons and pages, etc.

To select a device you wish to control, click on the small triangle in the top panel of the Remote Screen form and load the appropriate codebase from the pull-down list.

You may also load codebases by clicking on the **hot buttons** in the very top panel of the Remote Screen form. There are five hot buttons, and all of them are assigned and renamed by means of the Hot Buttons form.

To control your entertainment device, just tap the virtual images of the remote buttons on the Remote Screen form, or click on the hard buttons while pointing the handheld at the given entertainment device.

Use the Setup form to do routine operations on your codebases: creation, learning, deletion, etc.

Use the Hard Buttons form to customize the hard buttons on the board of your handheld with the most typical actions. For example, you may customize the hard buttons to change the channel and adjust the volume.

Use the Preferences menu to store customized remote control configurations so as to quickly switch between them later. For example, you can store configurations for each room of your house to create a quick and easy way of switching all devices in the given room to the correct settings, or create several profiles for your home theater system.

You may also use Preferences for storing customized configurations for different users.

For more information including tutorials, please visit our website at www.novii.tv.

2. Install NoviiRemote Deluxe

Please visit our website at <http://www.novii.tv/pocketpc/deluxe> for more information how to download and order NoviiRemote Deluxe software.

TIP:

First download software and check thoroughly that NoviiRemote Deluxe is capable of controlling your home devices. After confirming that NoviiRemote Deluxe works for you, we encourage you to order the license.

NOTE:

NoviiRemote Deluxe is represented by the single version. This is not a demo version! This is a complete full-functioned application. However, without activation key NoviiRemote



suspends its work in ten days after the very first launch on your Pocket PC. To resume work of NoviiRemote Deluxe you will have to order the application and receive an activation key.

The only difference between the trial mode and the full one is an expiration period.

Installation

1. Download the zip-file containing NoviiRemote Deluxe software to any folder on your Windows computer.
2. Extract the contents of the zip file to the folder.
3. Put the NRD_PPC_UserGuide_41.pdf (this document) into a convenient place, where you can access it again. This is the User Guide in PDF format.
4. Read the end user license agreement carefully for NoviiMedia software, license.txt.
5. Refer to the readme.txt document for information concerning the contents of the zip-file and the installation instructions.
6. After completing the ActiveSync operation you can immediately begin using NoviiRemote Deluxe!

3. Setup Form

To launch the Setup form, just open the Options menu and select the Setup item.

Use the Setup form to create and make changes to codebases.

A **codebase** is a file containing the infrared signals that control your equipment. A codebase consists of several **pages** displayed on the screen of your handheld, see the Remote Screen form. Each page consists of the soft **buttons** beaming infrared signals, which control your home devices. **Navigation buttons** allow jumping between pages



TIPS:

1. First, create several codebases using the Add wizard. Note that you'll need one codebase for each home entertainment device. Click the **Add** button to launch the Add wizard. The wizard provides several options for creating new codebases using predefined infrared files, skins and patterns (TV, Cable, DVD, etc.).

2. Create a custom interface. If you are not satisfied with the predefined user interface of a codebase, select it and click the **Edit** button to launch the Button Layouts Editor. You may rename and move buttons, delete unnecessary buttons, create new buttons, create additional pages, etc.

Note. Button Layouts Editor allows macro programming. For example, you may create a macro that will turn on 3 devices with one button, switch your Cable TV for your favorite 155-th channel by the only click, etc.

3. Use the **ReLearn** button to learn the buttons of the selected codebase. You may learn all the buttons inside the given codebase or some buttons only.

4. Use the Setup form to perform routine operations on your codebases:

- Use the **Delete** button to delete the selected codebase. All infrared signals stored inside the deleted codebase will be lost, and you will not be able to control the given device anymore! To restore the codebase you will have to perform learning signals from your original remote control.
- Use the **Rename** button to rename the selected codebase.
- Use the **Beam** button to send the selected codebase to another handheld.



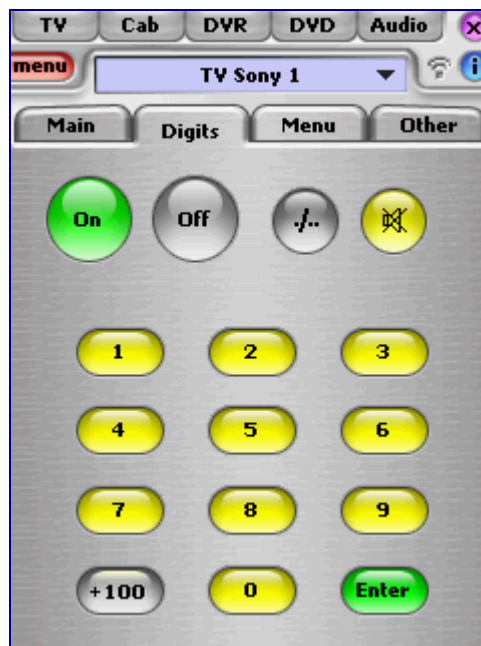
5. Use the **Done** button to close the Setup form and return to the Remote Screen form.

Use the **Select** button to close the Setup form and return to the Remote Screen form where the selected codebase will be automatically downloaded.

4. Remote Screen Form

The Remote Screen form is the main form of the application. This is a form which is launched the moment you launch NoviiRemote Deluxe software. When you close any other form, the Remote Screen form is automatically launched.

The Remote Screen form allows you to control your home entertainment devices.



To select a device you wish to control, click on the small triangle in the top panel of the Remote Screen form and load the appropriate codebase from the pull-down list.

You may also load codebases by clicking on the hot buttons in the very top panel of the Remote Screen form. There are five hot buttons, and all of them may be assigned and renamed by means of the Hot Buttons form.

To control your device, just tap the virtual images of the remote buttons on the screen of your handheld, while pointing the handheld at the given entertainment device.

You may also control your device by tapping the hard buttons on the board of your handheld. The hard buttons are customized by means of the Hard Buttons form.

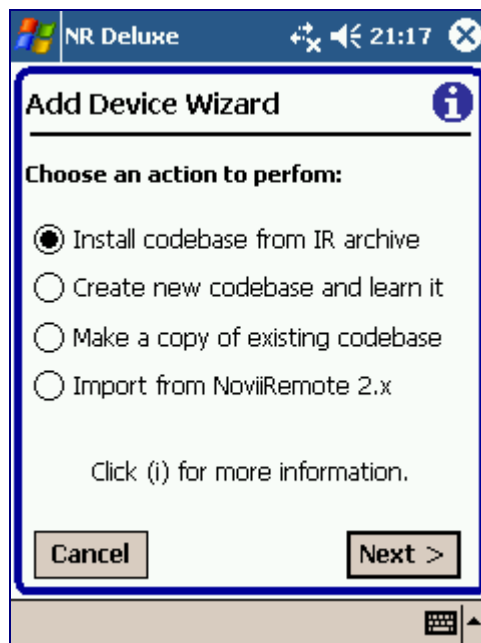


TIPS:

- Use the navigation buttons (Main, Digits, Menu, Other, etc.) to display additional pages of the codebase with buttons to control your device.
- To open the application menu, just click the “menu” button at the upper left-hand corner of the Remote Screen form. In response the Options and Preferences menu appear at the bottom of the screen.
- If NoviiRemote Deluxe does not control your device, first verify that you have loaded the appropriate codebase.
- If you do not have the appropriate codebase, press the “menu” button, select the “Add New Device” item from the Options menu, and create a new codebase by using the Add wizard.
- Use the Hard Buttons form to customize the hard buttons on your handheld for the actions you use most often.
- If you are not satisfied with the user interface of a codebase, launch the Setup form, select the codebase, click the Edit button and create your own interface. You may rename, move and delete any button, create new buttons and pages, etc.

5. Add New Device Wizard

The Add wizard provides you with four ways to create (install) new codebases. To launch the wizard, just open the Options menu and select the “Add New Device” item.



Next, select one of the four choices, and the wizard will guide you through several steps to create a new codebase.



1. Use an infrared codes from the IR archive with one of the predefined button layouts (called **patterns**).
2. Create a new codebase by selecting a pattern, then learning the signals from the original remote control. Note that the pattern does not contain infrared signals, so the wizard prompts you to learn the buttons from an original remote control.
3. Make a copy of an existing codebase, and relearn its buttons to create a new codebase.
4. You can also import a codebase from the NoviiRemote Classic 2.x format in the Deluxe format.

Important notes:

- A **codebase** consists of several **pages** showing the virtual remote control interface. One page only may be displayed on the Remote Screen form of your handheld at any given time. Each page contains **buttons**, which either send an infrared command controlling your home entertainment device, or which force the program to load another page on the Remote Screen form.
- NoviiRemote Deluxe provides you with 16 predefined button layouts called **patterns**. A pattern does not contain any infrared signals. It provides a button layout only.
- For your convenience, patterns with the same graphics design are combined into the **skin files** within the program. At present NoviiRemote Deluxe provides users with the only skin file for 240*320 resolution.
- When you want to select a pattern, the wizard first prompts you to select a skin file, and then select a pattern from the skin-file.
- NoviiRemote provides you with an **IR archive** containing a selection of infrared codes from many of the most popular home entertainment devices. The infrared codes contain signals only, and do not contain any information concerning button layouts.
- When you want to use pre-installed infrared codes from the infrared archive, the wizard first prompts you to select the device type and its brand. Next, it helps you to find the best infrared codes for controlling your home device.
- On completing the installation of the new codebase, the Add wizard prompts you to assign the codebase to one of the five **hot buttons** at the very top panel of the screen. The hot buttons give you the quickest way to load codebases on the screen of your handheld.



6. Learning IR Codes

If your device does not have a pre-assigned codebase, it is easy to "learn" a new one to your handheld.

You may learn any codebase. Just launch the Setup form, select a codebase and click the ReLearn button.

The learning form may also be launched at the completion of the creating of the new codebase by means of the Add wizard.

Before starting learning, the application launches the following form:

A screenshot of a Windows-style dialog box titled "Learn Codebase". The dialog has a blue title bar with the text "NR Deluxe" and a system clock showing "21:18". Inside the dialog, there is a text field labeled "Name:" containing the text "TV Sony 1". Below this, there is a section labeled "Select learning mode:" with two radio button options: "Single mode (recomended)" which is selected, and "Double mode (on problem only)". At the bottom of the dialog are two buttons: "Start Learning" and "Cancel". An information icon (i) is located in the top right corner of the dialog's content area.

In most cases it is sufficient to perform learning in Single Mode. However, if you face problems with switching on your TV receiver to channels like 11, 22, 33, etc, or if the Mute button does not work properly, then you should perform learning in Double Mode. This requires double learning of each button. Double learning enhances the infrared codebase stored in your handheld computer. Next, click the "Start Learning" button to begin learning.



Important. Before to begin learning make sure to place your handheld computer and the remote control from your device (TV, DVD, etc.) on a table, facing each other, with about 5-10 inches between. **The infrared ports of each device must be facing each other.**



To learn any button, e.g. PiP Ch+, first tap its virtual image on the screen of the handheld. Then press the button “PiP Ch+” on your original remote and hold it until the handheld produces a beeping sound, and then release 'PiP Ch+' button on the original remote. You will notice a change in the button's image on the handheld as you complete this process.



NOTE:

When learning in Double Mode, the program prompts you to perform the learning steps two times for each button.

TIPS:

- Click the Main, Digits, Menu and other tabs to load another pages of the codebase for learning.

When you have completed learning all the buttons you wish to use, click the "done" button at the upper left-hand corner of the learning form, and you are ready to use the learned button immediately by means of the Remote Screen form.

7. Hot Buttons Form

There are five hot buttons at the very top of the Remote Screen form. These hot buttons are used in the program to launch codebases.



The names and assignments of the hot buttons may be changed by means of the Hot Buttons form. To launch the form, just open the Options menu and select there the "Hot Buttons" item.



TIP: Use the Hot Buttons form to assign the hot buttons to the codebases you load most often. For example, you may assign the codebase controlling your cable box to the first hot button, next assign the codebase controlling your TV set to the second hot button, etc.

To customize a hot button, just type in its label and press the popup trigger to select a codebase from the list of available codebases.

Notes:

1. The hot button with the number 1 corresponds to the hot button furthest to the left on the Remote Screen form, while the hot button with the number 5 corresponds to the hot button furthest to the right on the Remote Screen form.
2. The ordered numbers of the hot buttons are for your convenience only. They are not displayed on the Remote Screen form.
3. If you do not want a hot button to launch any codebase at all, select the value "none" from the list of codebases.

8. Hard Buttons Form

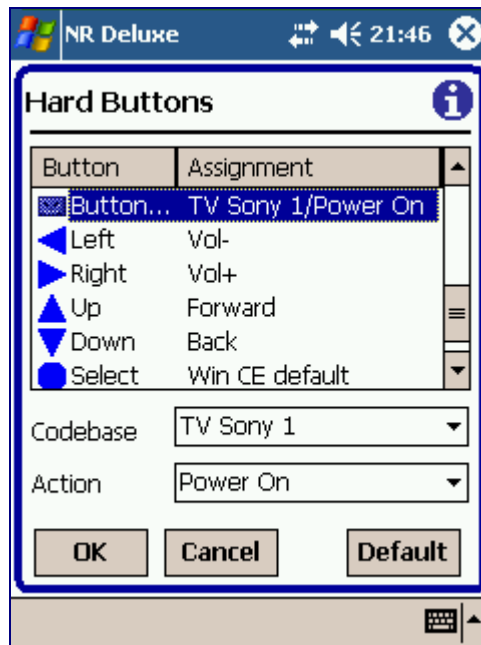
Hard buttons are on the board of your handheld, and are used to perform assigned actions.

The special Windows application called Buttons allows customizing the hard buttons by assigning



them applications.

To launch the Hard Buttons form of NoviiRemote software, just open the Options menu and select the “Hard Buttons” item.



Use the Hard Buttons form to customize the hard buttons with the remote actions you perform most often. For example, you may customize the hard buttons to change the channels and the volume level. **Spend a moment to customize your hard buttons to get the most enjoyment using NoviiRemote Deluxe!** While using the hard buttons, you won't have to take out your stylus, and can operate NoviiRemote Deluxe with just one hand.

To customize a hard button, just press the given button, or tap the corresponding button on the Hard Buttons form. Next select a codebase and then select an action assigned to the button.

Important Tips:

1. The Hard Buttons assignments are active on the Remote screen of your handheld only.
2. When you press the hard button with the Remote Screen launched, the hard button performs the assigned action from the selected codebase.
3. The special value "Current Codebase" selected from the Codebase list means performing the assigned action from the currently active codebase.
4. The special value "Others" selected from the Codebase list permits the assignment of special actions to a hard button:
 - **Disabled Button:** the button won't perform any action.



- **List of Codebases:** the button will launch the list of codebases for selection.
- **Launch Setup Form:** the button will launch the Setup form.
- **Win CE default:** the button will perform the action assigned by means of the Windows settings.

Important! The Hard Buttons assignments function on the Remote Screen form only. They do not work from within the Setup form, Preferences and other form.

9. Preferences for Multiple Rooms

Preferences forms are launched from the Preferences menu of the application.

Use Preferences to store customized remote control configurations, so you can quickly switch between them later.

For example, you can create and store configurations for each room of your house thus getting an easy and quick way of switching all devices in the given room to the correct settings.

You may create and store several profiles for your home theater system.

You may also create and store customized configurations for your wife/husband and kids.

NoviiRemote Deluxe saves the following preferences:

- custom assignments to five hot buttons at the top of the Remote Screen form,
- custom assignments to hard buttons for each room.

To prepare Preferences for a given room please perform the following actions:

- Launch the Hot Buttons form, and assign the hot buttons with codebases capable of controlling the home devices located in the given room.
- Next, launch the Hard Buttons form and customize the hard buttons with the remote functions you use most frequently in this room.
- When you have all the setting for the given room entered, launch the Preferences menu, select the Save item from the pull down menu, enter the name of the file where your preferences will be saved, and press the Save button.

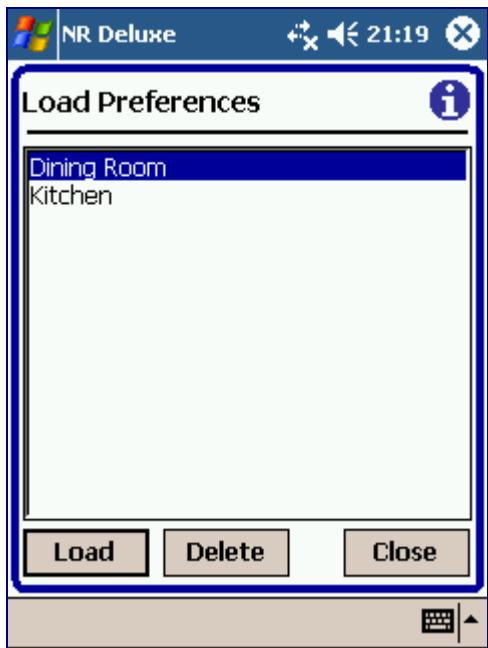
TIP:

Most users assign names like Kitchen, Dining Room, Home Theater, etc.

Switching between rooms. NoviiRemote allows you to quickly load previously saved preferences from their respective files. To load preferences for a room, launch the Preferences menu, select



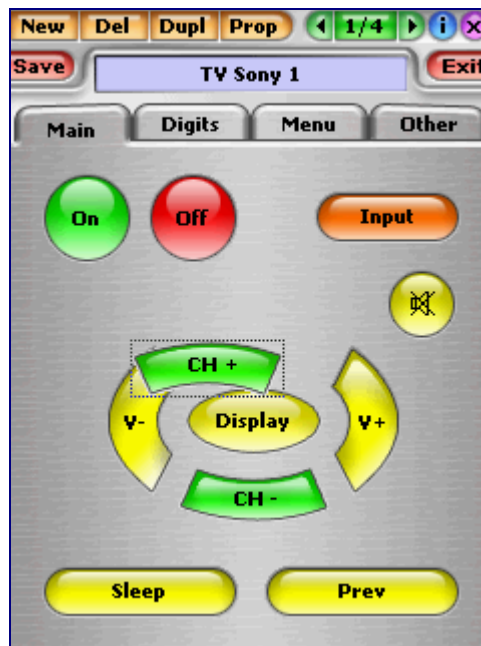
“Load” from the pull down menu, then select the name of the file in the list and click the Load button.



Use the Delete button to delete Preferences you no longer need.

10. Button Layouts Editor

To launch the Button Layouts Editor form, open the Options menu and select the Setup item. Next select the codebase you wish to edit and press the Edit button.



Click a button to make it selected. You may move the selected button to any position on the screen, using your stylus.

Use the toolbar at the top of the screen to perform the following actions:

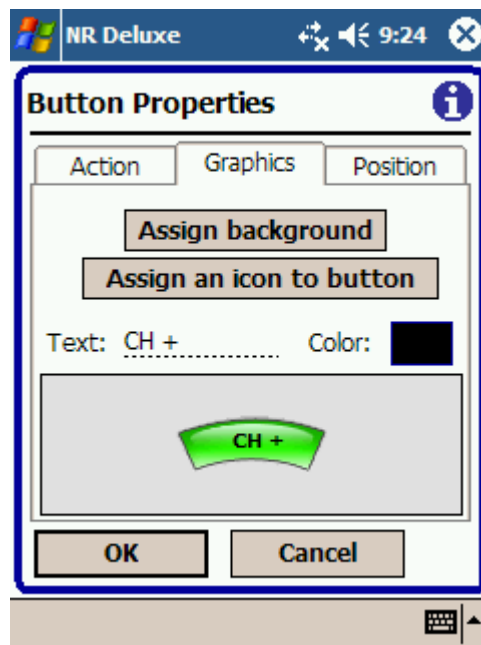
- Click New to create a new button. NoviiRemote Deluxe will launch the Buttons Properties form (see below) in order for you to select the graphics image of the new button and assign the action to the new button.
- Click Del to delete the selected button.
- Click Dupl to make a copy of the selected button.
- Click Prop to change the properties of the selected button. NoviiRemote will launch the Buttons Properties form (see below) in order you may select the graphics image of the new button and assign the action to the new button.
- Click (<| and |>) buttons at the right-hand part of the toolbar to select the page for editing.
- Notice the button between (<| and |>). It displays the ordered number of the page being edited and the total number of the pages within the given codebase. Click this button to launch the Page Editor. The Page Editor helps you to assign background images to pages, create additional pages, and delete unnecessary pages.
- Click Save to save all the changes you've done.
- Click Exit to finish editing. NoviiRemote Deluxe will ask you whether to save or not the changes you've made.

TIP: Create your own user interface, so your remote control is perfect for you!



10.1. Button Properties form

Pressing of the New or Prop button in the toolbar launches the Button Properties form.



At the top of the Button Properties form there are three tabs named Graphics, Position and Action. By clicking the tab you open the corresponding sub-form placed at the middle of the screen. At the bottom of the form there are OK and Cancel buttons.

Click the Graphics tab to launch the Graphics sub-form where you can assign an icon and background image to the button, type in the text displayed on the button and select the color of the text.

Click the Position tab to launch the Position sub-form where you can move the text and a small icon on the button to a new position.

Click the Action tab to launch the Action sub-form where you can assign an action to the button, e.g. sending an infrared signal, executing a macro, launching a codebase, etc.

Click the Cancel button to return to the Button Layouts Editor. All the button properties changes will be lost!

Click the OK button to accept the new button properties and return to the Button Layouts Editor.



10.1.1. Graphics sub-form

See the screen shot above.

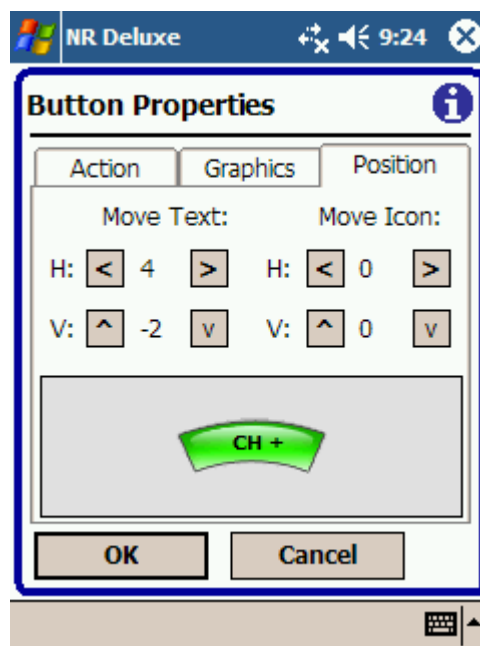
Use the "Assign Background" button to select a background image to be displayed on the button.

Use the "Assign an icon to the button" to select a small icon to be displayed on the button.

Type in the text label of the button in the Text field.

Use the Color button to select any color for the text displayed on the button.

10.1.2. Position sub-form



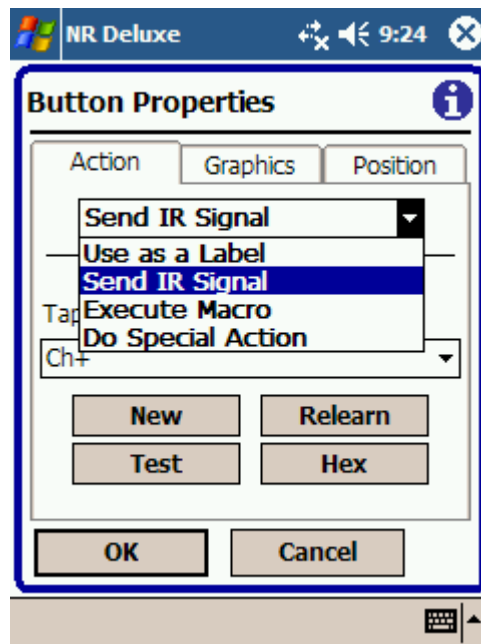
Use (<), (>), (^), and (v) buttons to move the text and the icon displayed on the button to a new position.

10.1.3. Action sub-form

Use the action sub-form to assign an action to the button.

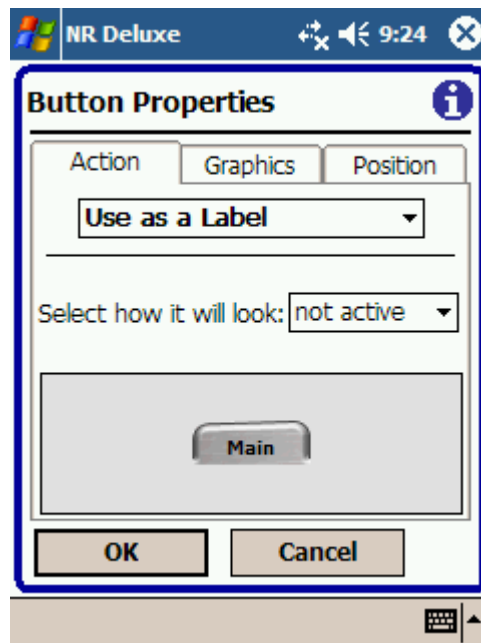
Important. Upon clicking the button, NoviiRemote will execute the action assigned to the button by means of this sub-form.

Four types of actions are available: **Use as a Label**, **Send IR Signal**, **Execute Macro**, and **Do Special Action**. To choose the type of an action, use the pull-down list below the Action – Graphics – Position row of tabs.



Use as a Label

Choose "Use as a Label" if you don't want the button to do anything when clicked. Such a button is used as a label.

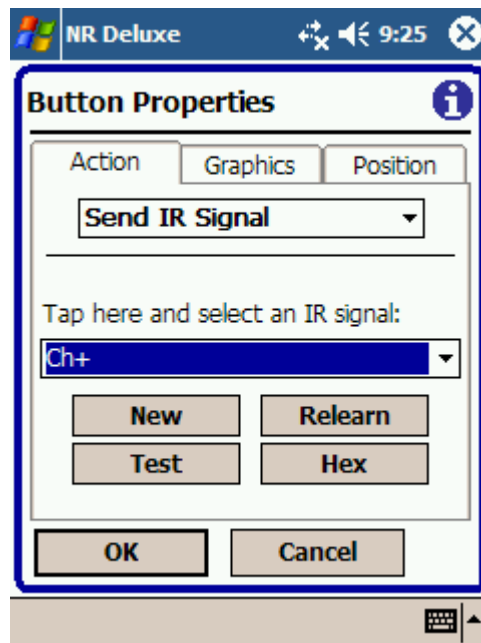


Select how the button will look: pressed, not active, or normal.



Send IR signal

Choose "Send IR signal" if you want the button to send the infrared signal stored inside the current codebase.



Tap the dotted rectangle and select an IR signal stored inside the current codebase you're editing now. The selected IR signal will be sent when the button clicked.

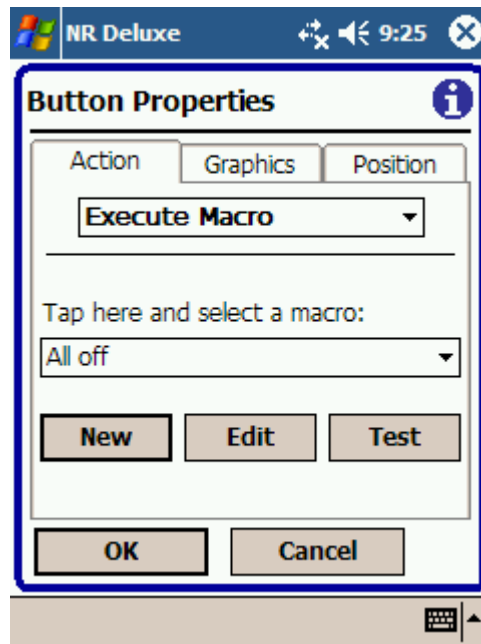
TIPS:

- If the codebase you're editing now does not contain the proper IR signal, just click the New button for creating the new IR signal. The application will display a form with the list of typical names for selection. If the list does not contain the proper name, you should click the "More Names ..." button and enter the custom name.
- Click the Relearn button if you want to learn the selected IR signal from the original remote control.
- Click the HEX button if you want to assign a hex code to the selected IR signal.
- Click the Test button if you want to verify how the selected IR signal works.



Execute Macro

Choose "Execute Macro" if you want the button to execute a list of commands.



Tap the dotted rectangle and select a macro stored inside the current codebase you're editing now. The selected macro will be executed when the button clicked.

TIPS:

- Click the New Macro button to launch the Macro Editor for creating a new macro.
- Click the Edit button for editing the selected macro.
- Click the Test button to verify how the selected macro sends IR signals assigned to the macro.

Note. Please refer to Chapter 11 for description how Macro Editor works.

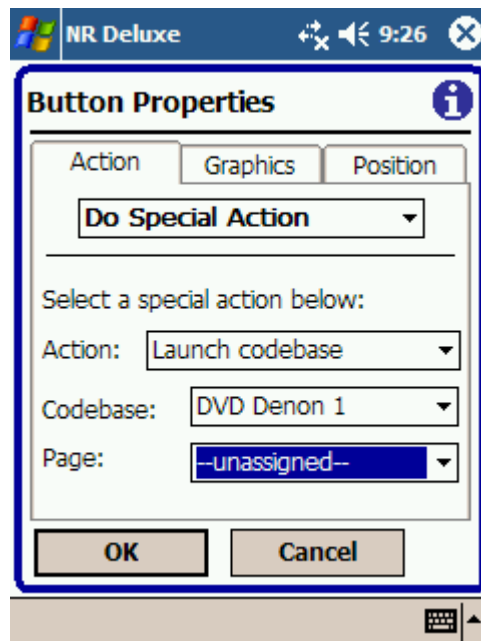
Do Special Action

Choose "Do Special Action" if you want the button to execute one of the predefined actions when clicked.

First select an action from the pull-down list:



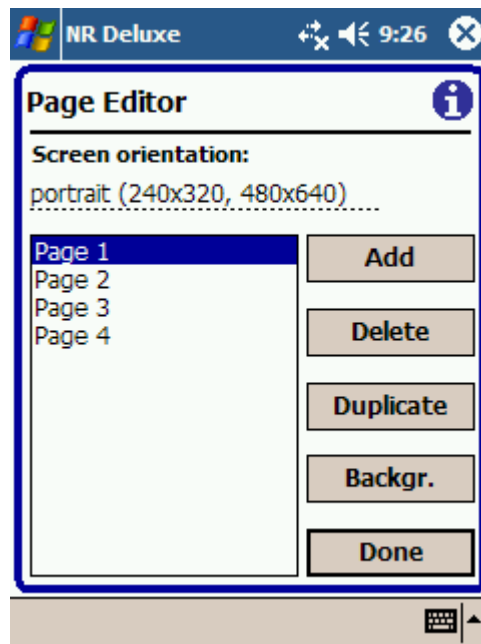
Next specify the action options:





10.2. Page Editor form

The Page Editor helps you manage pages in the given codebase. The form is called up by pressing the button located between (<| and |>) buttons (notice 1/4 on the screenshot at the beginning of the chapter 10).



Notice the list of pages on the left part of the screen.

To select a page for editing, just click the line with the corresponding ordered number on the list of pages.

Use the Add Page button to create a new page.

Use the Delete Page button to delete the selected page.

Use the Duplicate button to make a copy of the selected page.

Use the Background button to assign a background image to the selected page.

Use the Done button to close the Page Editor and return to the Button Layout Editor.

11. Programming macros

See section “10.1.3 Action sub-form” for more information how to launch the Macro Editor.



The main form of the Macro Editor displays a list of actions to be executed when the macro is run.

Click the IR button to add an IR signal to the end of macro.

Click the Pause button to add a delay action (in seconds).

Click the Special button to add a special action, i.e. launching a codebase, loading another page, etc.

Note. The action is added to the end of the macro. Use Up and Down buttons to move the selected action to the desired position inside the macro.

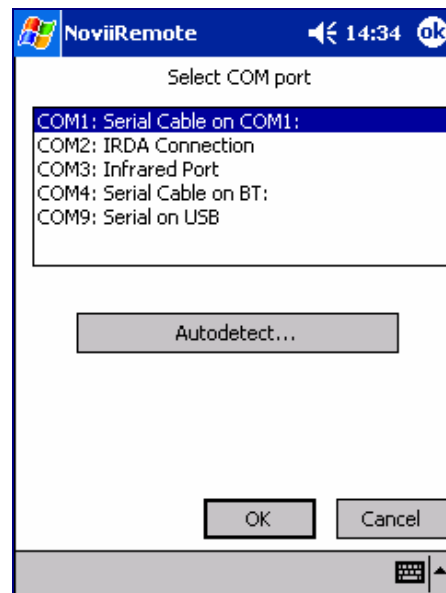
Use the Delete button to delete the selected action from the macro.

Use the Edit button to change options of the selected action.

12. IR Setup

This chapter describes manual configuration of the infrared driver, and should be used only when trouble-shooting.

To launch the form, just open the Preferences menu and select the “IR Setup ...” item.



Important: It is usually not necessary to tune your Pocket PC by means of the IR Setup form, as NoviiRemote software does this automatically. However, if NoviiRemote issues messages like **"COM port busy"** or **"error 303"** you should launch the IR Setup form and tune the infrared driver manually.

The IR setup form contains a list of COM-ports available on your Pocket PC. This menu usually looks as follows:

COM1: Serial Cable on COM1
COM2: IrDA Connection
COM3: Infrared Port
COM4: Serial Cable on Bluetooth
COM9: Serial on USB

Step 1. The best way to tune the driver is to press the Autodetect button from within the form. In response, NoviiRemote detects the correct COM-port and pre-selects the corresponding line from the list of available COM-ports. Next, press OK, and go to the Setup form, create a new codebase, learn 2-3 buttons from your original remote control and try to control your home device. If you can now control your home device, you won't ever need to go to the IR Setup form.

Step 2. If NoviiRemote still issues "Com port busy" messages, then you have to tune the driver manually. Just select another COM port from the list of available ports, press the OK button, and check again if NoviiRemote controls your home devices. Try all the ports on the list until you find the correct one.

Step 3. If you cannot find the proper COM-port, try to change the way in which your Pocket PC receives infrared signals. Open the Start menu of your Pocket PC, select the Settings item, and press the Connections tab. The Beam settings window must appear, with the Receiving check box.



Change the value of the box to the opposite one and close the window by means of the Ok button. Next, return back to the IR Setup form of NoviiRemote, and repeat Step 1 and Step 2.

TIP: Usually USB and Bluetooth related COM-ports do not suit the needs of NoviiRemote.

13. Troubleshooting

If you experience difficulties controlling any home device, try the following:

- First, be certain that the codebase you're trying matches your home device. If not, either download an existing codebase or create a new codebase by means of the Add New Device Wizard.
- While learning remote commands, be certain that the infrared ports of the remote and your handheld are facing each other at the 5-10 inches distance. On problem with learning try to perform learning at the 20 inches distance.
- Be certain that the batteries in your handheld are not weak. If depleted, replace or recharge the batteries in your handheld and try again.
- Be certain that the distance from your device to the handheld is sufficient for NoviiRemote to work properly. Depending on the model of the handheld and the model of equipment you are trying to control, the maximum range is 5-40 feet.
- If you face problems with your equipment such as switching your TV receiver to channels like 11, 22, 33, etc. or if the Mute button does not work properly try re-learning your codebase. Go to the Setup form, select the problematic codebase in the list of codebases and press the ReLearn button. Then check the Double Mode box and click "Start Learning" to begin. When learning in Double Mode, the program prompts you to perform the learning steps two times per each button.
- If problems persist, please consult our website www.novii.tv for additional troubleshooting solutions.
- If NoviiRemote displays the message "Internal IR driver error 303 ...", open the Start menu of your Pocket PC, select the Settings item, and press the Connections tab. The Beam settings window must appear, with the Receiving check box. Change the value of the box to the opposite one and close the window by means of the Ok button.

Review the Tutorials, FAQ, Online Support and other information available on our web site. If you still can't find answers to your questions, please write to us at: nrdppc@novii.com



14. System Requirements

NoviiRemote Deluxe for Pocket PC / Windows Mobile, ver 4.1 (build 2006.07.25c) released in July 2006:

- Windows CE 3.0, Pocket PC 2002/2003, Windows Mobile, Windows Mobile Second Edition, Windows Mobile 5.0
- 2.5 MB of free memory
- Additional memory for databases (called codebases) used to control home devices, at 20-30 KB per codebase

Compatible with:

- Acer n30, n35, n50, [range is over 20 feet](#)
- Asus MyPal A620, A716, 730W, [range is over 15 feet](#)
- Audiovox 6600, 6700, range is 2-4 feet only
- Casio e200, [range is about 15 feet](#)
- Cingular 8125, 2125, [with 8-15 feet range](#)
- Dell Axim X3, X3i, X30, X5, x50, x50v, x51v, [range is 10-25 feet](#)
- Dopod 818, 838, 900, P100, [range is about 10 feet](#)
- Eten M500, P300
- Fujitsu Siemens Pocket Loox 600, 720, N560, [range is 15-20 feet, up to 35 feet](#)
- Garmin iQue M5 PPC, [range is up to 30 feet](#)
- HP iPAQ h1910, h1915, h1920, h1930, h1940, h1945, range is 3-5 feet only
- HP iPAQ h2210, h2215, h4150, h4155, h4350, h4355, range is 3-5 feet only
- HP iPAQ h5150, h5155, h5450, h5455
- HP iPAQ h5550, h5555, [range is 10-15 feet](#)
- HP iPAQ h6300, h6315, h6325, h6340, h6365, [range is 15-25 feet](#)
- HP iPAQ h6400 series, hw6500 series, [range is 10-15 feet](#)
- HP iPAQ hx2100 series, [range is about 10 feet](#)
- HP iPAQ hx2410/2415, hx2490/2495, hx2750/2755, hx2790/2795, [range is about 15 feet](#)
- HP iPAQ hx4700, hx4705, [range is 15 to 20 feet](#)
- HP iPAQ hw6915, [range is about 10 feet](#)
- HP iPAQ rx1950, rx1955, range is 2-3 feet only
- HP iPAQ rx3115, rx3715, [range is over 20 feet](#)
- HP iPAQ rz1710, rz1715, range is 2-3 feet only



- HP Jornada 560 series, [range is over 20 feet](#)
- HTC Wizard, HTC Faraday, HTC Universal
- I-mate JasJar, JAmin, [range is 10-15 feet](#)
- I-mate K-Jam, range is 6-8 feet only
- I-mate, I-mate jam, I-mate PDA2K, range is 3-6 feet only
- iPAQ 3100, 3600, 3700, 3800 and 3900 series, [range is over 20 feet](#)
- Medion MD 7200, 40600, 95000, PNA 100, [range is over 15 feet](#)
- Mitac Mio 160, 168, range is 3-6 feet only
- Navman Pin 570, [range is 15-25 feet](#)
- O2 xda, xda, xda II, xda Ili, xfa atom, xda neo, range is 2-5 feet only
- O2 xda exec, xda mini S, [range is 15-20 feet](#)
- Orange SPV M1000, 2000, range is 3-5 feet only
- Orange SPV M500, M600, M5000, [range is up to 20 feet](#)
- Palm Treo 700w, [with 6-12 feet range](#)
- Qtek 2020, 2020i, 2060, 9090, range is 3-6 feet only
- Qtek s100, s110, s200, range is 7-10 feet
- Qtek 9000, 9100, [range is up to 25 feet](#)
- Samsung SCH-i730, [range is over 20 feet](#)
- Samsung SPH-i700, [range is 5-10 feet](#)
- Sprint PPC 6600/6700, [range is 3-6 feet](#)
- Siemens SX66
- T-Mobile MDA, MDA Pro, MDA Compact, MDA Compact II, MDA vario, [range is up to 15 feet](#)
- Toshiba e310, e330, e335, e350, e355, e400, e405
- Toshiba e740, e750, e755, e800, e805
- ViewSonic Pocket PC V35, V37
- etc. *

***Warning:** The infrared port of some devices, such as HP iPAQ h4155 and others, is slightly underpowered, and effective range may be 1-1.5 meters. However, for many devices the range is 3-7 meters.

***NOTE:** The absence of a particular device from this list does not mean that it is incompatible with NoviiRemote Deluxe; it simply means that it has not been thoroughly tested.

Warning: The program does not support old devices using MIPS and SH3 processors.



15. About NoviiMedia

NoviiMedia is engaged in the development of several lines of products for handheld computers. We are committed to delivering high quality solutions to the growing number of handheld owners who use their devices for fun and entertainment.

Check NoviiMedia web site for FAQ, Online Support, Tutorials and other information about our products at

<http://www.novii.tv/pocketpc/deluxe> and www.novii.com

If you can't find answers to your questions on the web site, please write us an e-mail to

nrdppc@novii.com

To receive information about upgrades to this software and additional news from Novii about our products, sign up for the **NoviiNewsletter** on our website:

<http://www.novii.tv/>