

WinLauncher for PalmOS®

*All you need is the tip of the stylus and a
bit of your imagination...*

Rev. January 26, 2006 / WinLauncher 1.13

Table of Contents

What is WinLauncher?.....	3
Installing WinLauncher.....	4
Installing on the device.....	4
Activating WinLauncher	4
Deactivating and Uninstalling WinLauncher	5
Running applications.....	6
The Fixed and Recent Lists.....	6
The Filer Application.....	7
The Application Categories (Unlimited List)	8
The Shortcuts System	9
Managing Applications And Files	10
Installing and receiving applications and files.....	10
Copying and Moving Applications and Files	11
Sending Applications and Files	12
Working With Files	13
Device, Storage, Applications and File Properties	14
Device Properties.....	14
Storage Properties.....	14
Application and File Properties	14
Fast Boot, Expansion Cards Cache & Auto Refresh	15
Settings	16
General	16
Week-In-Review	16
Filer	17
Security	17
5 Way Navigator Support	18
Week-In-Review – Your Schedule on the Desktop	19
Appointments and Tasks Integration.....	19

DateBk5, Agendus and DateMan Support	20
Beyond Contacts Support.....	21
Please, check the previous section (and Fig. 21) to see how to set WinLauncher to work with Beyond Contacts!	21
New built-in PIM applications – Calendar and Tasks	22
Desktop Wallpaper / JPEG Backgrounds	23
Registering WinLauncher	24
Registering	24
Upgrading WinLauncher	25
Feedback and Support	26
Contacting Aylin.biz	26
You make the difference!	26
Legal	26

What is WinLauncher?

WinLauncher is a program for PalmOS® devices that replaces the built-in launcher program that comes with the device.

The launcher program is the program used to manage your device, send and receive applications and files, start all your other programs.

See the pictures for examples of how the default launcher and WinLauncher programs look like.

WinLauncher is built to help you do things faster and squeeze up the potentials of your device in your benefit.

Key Features Of WinLauncher

- Intuitive interface!
- Configurable icons to access any application on your device or expansion card!
- Smart integration with Calendar and Tasks applications!
- Appointments and tasks up to a week are always visible on the main screen!
- Tap an info line or icon to open the respective application!
- Your device can do it!

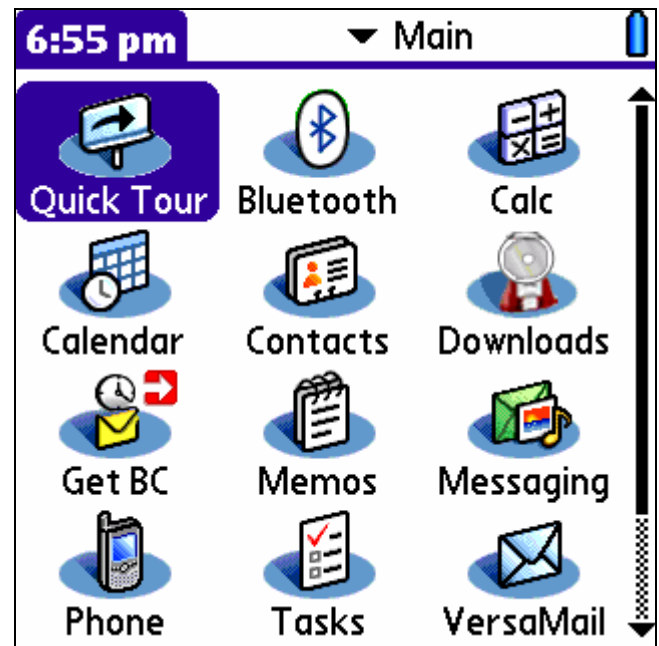


Fig 1 - The Built-In Launcher

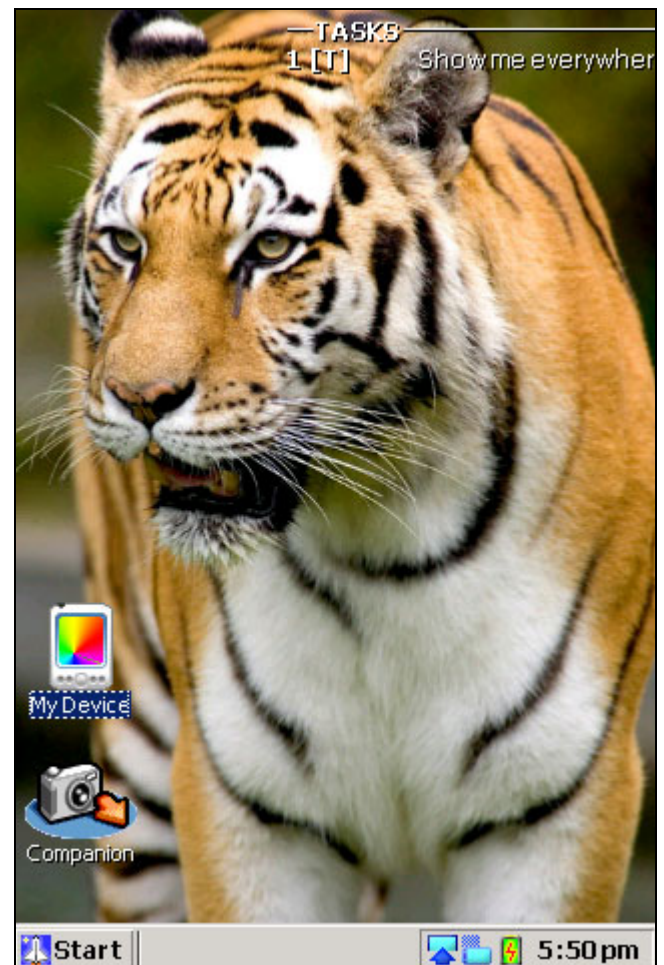


Fig 2 - WinLauncher for PalmOS®

Installing WinLauncher

To start using WinLauncher you have to install it on your device and then to activate it.

Installing on the device

Install the WinLauncher(xxx).prc as a regular PalmOS® application by performing a HotSync™ operation. The (xxx) in the name is an optional part indicating the language of the build and other information.

Activating WinLauncher

To tell the device to use WinLauncher instead of the built-in one - you need to activate WinLauncher.

Activating WinLauncher

- 1. Tap on the "Start - > Device Control -> Activate!".
- 2. Answer "Yes" to the message box;
- 3. Done!
- No data is deleted or changed or could possibly be lost by making WinLauncher your launcher application.
- It's just safe!

Note: WinLauncher will automatically activate itself after installation.



Fig 3 - WinLauncher's icon in the built-in launcher

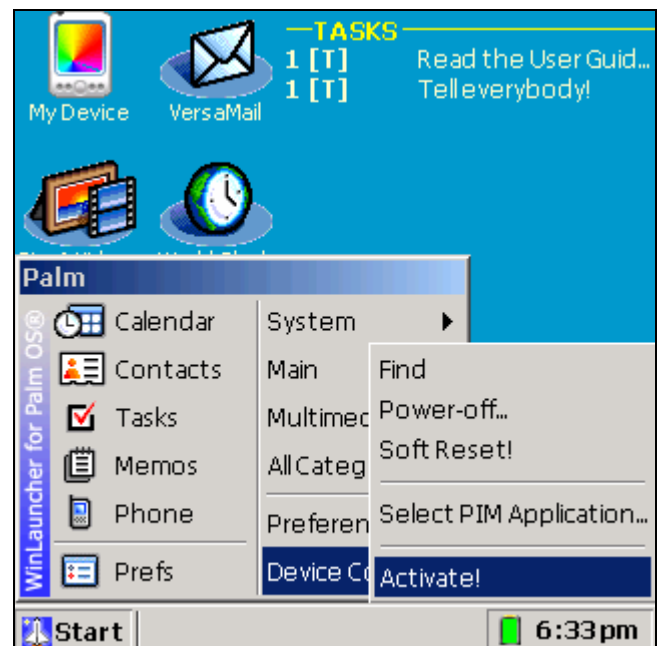


Fig 4 - Tap "Start -> Device Control – Activate!" to tell the device to use WinLauncher instead of the built-in launcher.

Deactivating and Uninstalling WinLauncher

If you want to stop using WinLauncher as the default launcher, you need to deactivate it.

To deactivate WinLauncher, open it and tap "Start - > Device Control - >Exit". WinLauncher will deactivate itself and will start the built-in launcher.

If you have remarks, complains or ideas about WinLauncher, please send them to support@aylin.biz. It will be greatly appreciated.

Thank you!

Running applications

You can run applications in 4 ways:

1. Using the list of fixed and recent application icons;
2. Using the "Filer" application that is started by tapping on the "Device" icon.
3. By using the popup submenus, that list your applications divided by categories
4. By creating shortcuts on the main screen (see mark "2" on the picture).

The Fixed and Recent Lists

The icons above the horizontal line are the fixed list of icons, these below the line are the recently launched applications.

Every time an application is started its icon is added on top of the recent list if it is not in the fixed list already.

Managing The Lists

- Tap on an icon to run the corresponding application!
- Tap and hold on an icon to popup the icon management commands list!
- To add an icon to the fixed list, use "Pin Here", to remove it – "Remove...".
- When a command can not be executed for the selected item – it is drawn in lighter colour.

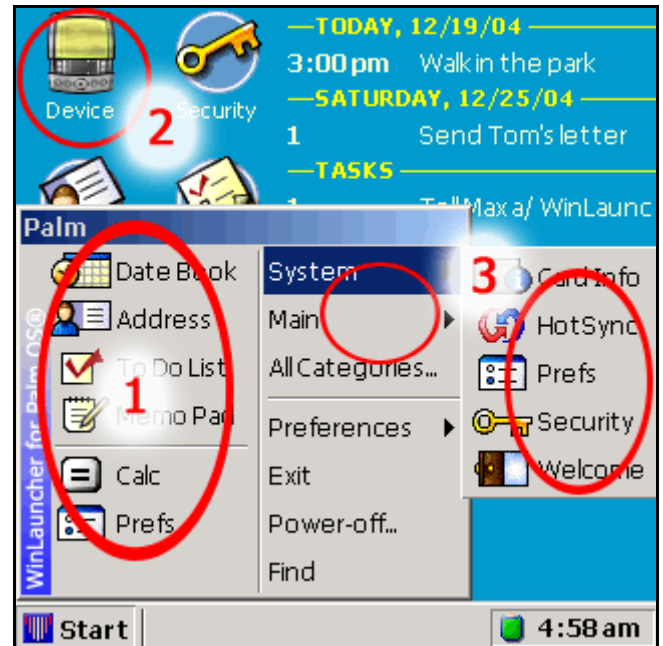


Fig. 5 - 4 ways to launch your applications

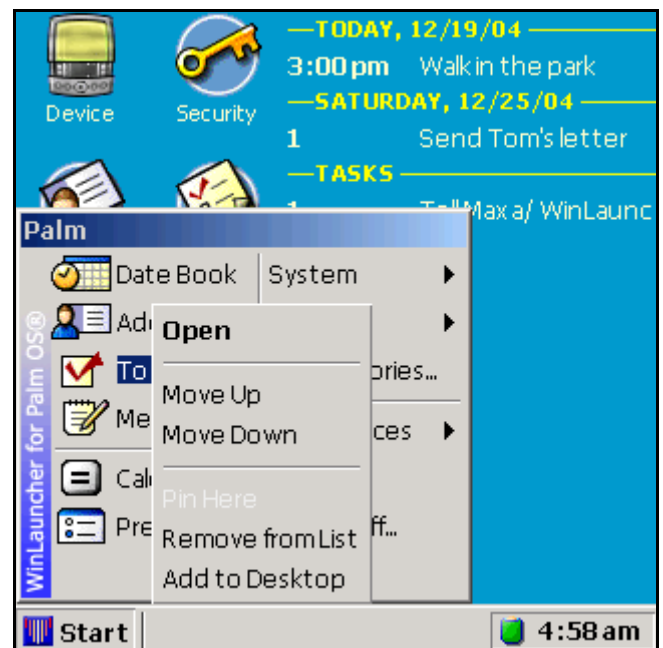


Fig 6 - The popup menu with commands for each icon in the list.
Tap and hold to open it.

The Filer Application

The filer application is a file browser that can show and manipulate the content of your device's internal memory and external cards.

(When opened, the internal memory, named "Palm" on the picture, will be named by your HotSync ID.)

Tap any of the icons to explore your device. Tap and hold any of the icons to show up the commands menu.

Features Of The Filer Application

- You can open more than one Filer windows.
- The caption shows you where you are.
- The "Up" icon leads you up to the list of the storage areas.
- Input a Graffiti® character to scroll the list to the first file with a name starting with this character
- Tap on application to **run** it.
- Tap+hold to bring up the menu with commands.
- "Open" equals a tap on the item icon or name.
- "Category..." will lead you to the categories management where you can change the category of the selected application
- "Add to desktop" will create a shortcut to this app.
- "Properties" will bring up a data dialog for this file.

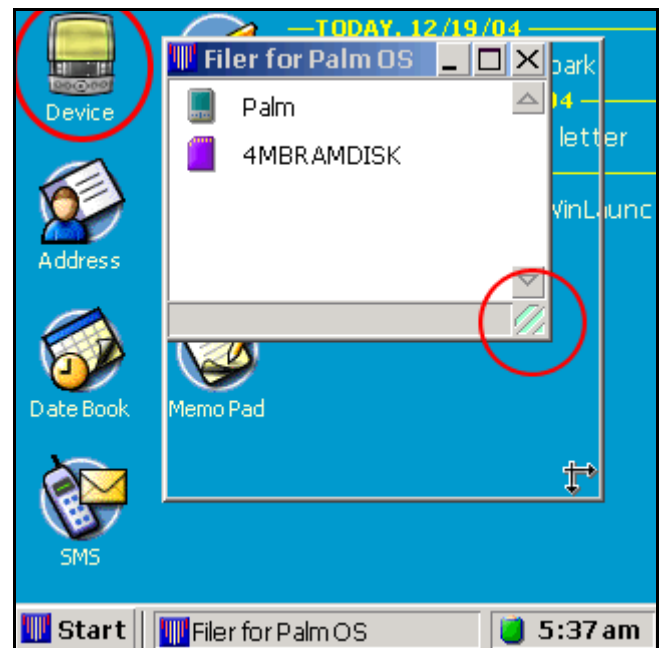


Fig 7 – The Filer window

- tap on "Device" to open it;
- tap and drag the bottom-right corner to resize it;
- tap and drag on the caption to move it;

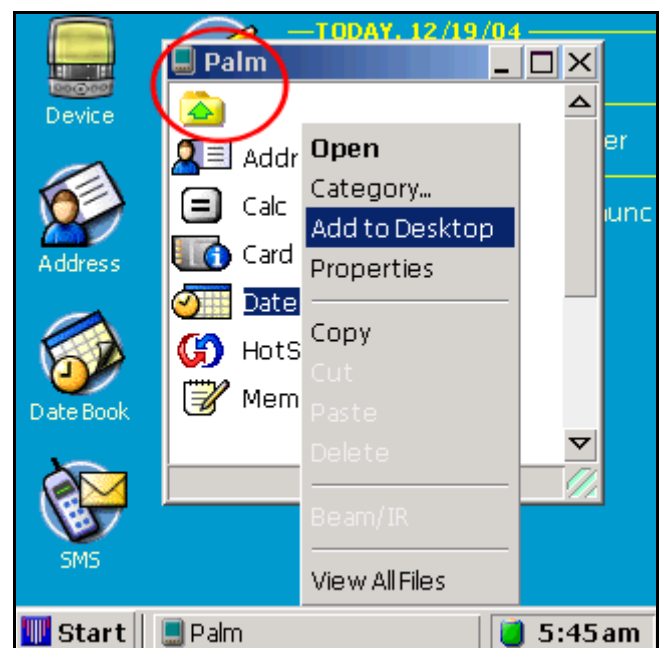


Fig 8 - Filer with the commands menu opened

The Application Categories (Unlimited List)

When first started, WinLauncher builds a list of application categories using the built-in launcher's databases.

Next, you can use the "Categories" screen to manage your list of categories.

Categories Features

- Unlimited numbers of categories (no 16 categories limit).
- Categories management follows the rules defined in PalmOS®.
- The Start Menu will show the top not-empty categories. The limit is the screen size.
- The popup lists of applications within each category are sorted alphabetically and are scrollable – see Fig 10.
- Use the "Category" command in Filer's menu (see Fig 8) to access the categories list – select a category and tap "OK" to change the category if an application.

The "New" and "Rename..." buttons on the "Categories" dialog will popup an input dialog with visual keyboard. This dialog accepts Graffiti® input, too.

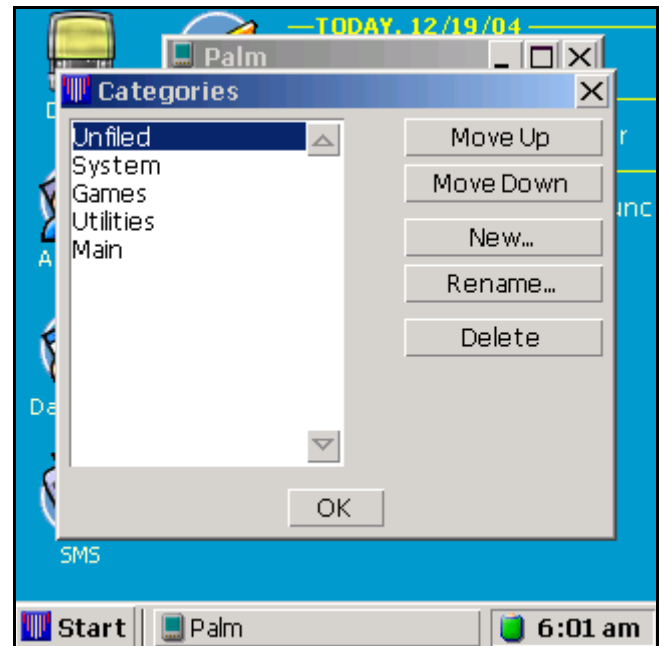


Fig 9 - Categories Management Screen

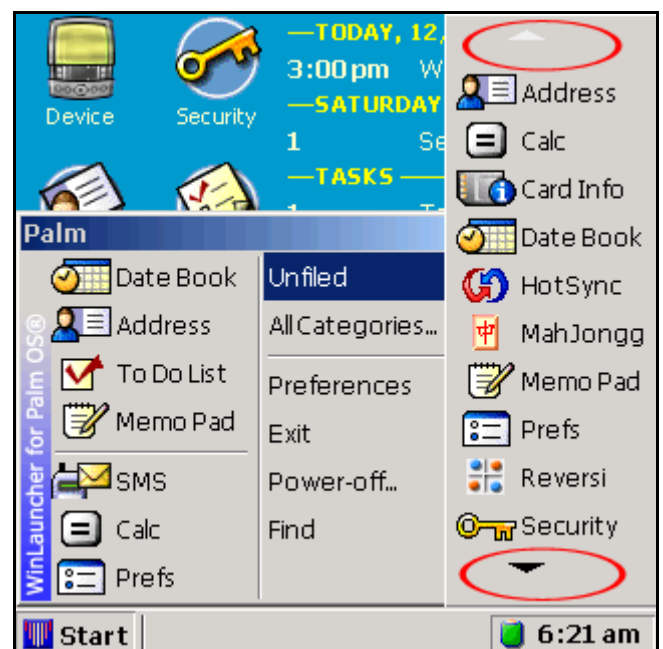


Fig 10 – the scrolling list of applications within a category

Note! These shortcuts will always start the latest application version found on the device. If you want to run older version, you have to locate and run it with Filer.

The Shortcuts System

Use the “Add to Desktop” command in the Filer menu (see Fig 8) to create a shortcut to an application on the desktop.

Later, tap on a shortcut to launch the corresponding application.

Shortcut Features

- Always points and starts the latest application version found on the device.
- If you want to start earlier version of the same application – you have to locate and start it with Filer.
- Amount is limited by the screen size.
- After screen rotation shortcuts may become invisible, but are preserved.
- If the shortcut points to app on an external card and the card is removed – the shortcut is preserved, but marked as missing (see Fig 11). If the card is inserted again – the shortcut is restored and usable.
- Tap+hold on a shortcut to access the commands menu.
- “Delete” (see Fig. 11) will remove the shortcut.

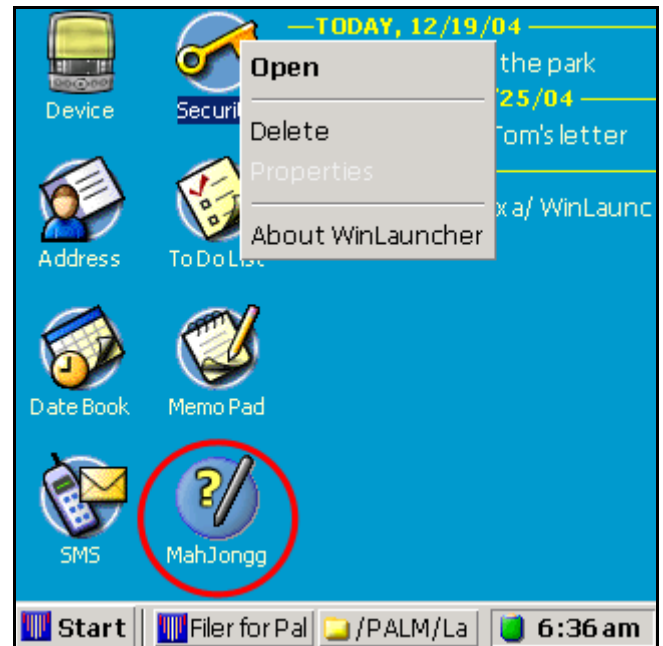


Fig 11 – Desktop shortcuts. Marked is a shortcut to an application on a missing expansion card.

Managing Applications And Files

Installing and receiving applications and files

There are 3 ways for an application or files to come to your device:

1. To install them during a HotSync™ operation.
2. To receive them via transferring (Infrared, Bluetooth™, etc) from another device.
3. To insert an expansion card in your device.

In all three cases the new applications become available immediately in the Start Menu category popup lists and in Filer windows.

New Applications

- When an application is received from another device, a Filer window will be opened with the received application outlined.
- Currently incoming applications are saved in the internal memory only.
- When an expansion card is inserted a Filer window showing card's contents will be opened, unless this is a card that do not contain applications or files.
- If the inserted card contains an program that should be run automatically, this program will be run instead of opening a Filer window.

Copying and Moving Applications and Files

The four standard commands are available in Filer's popup menu:

1. Copy.
2. Cut.
3. Paste.
4. Delete.

Select an item in the Filer window and select a command. For "Cut" and "Copy" navigate to a new location or activate another Filer window, open the menu and select "Paste".

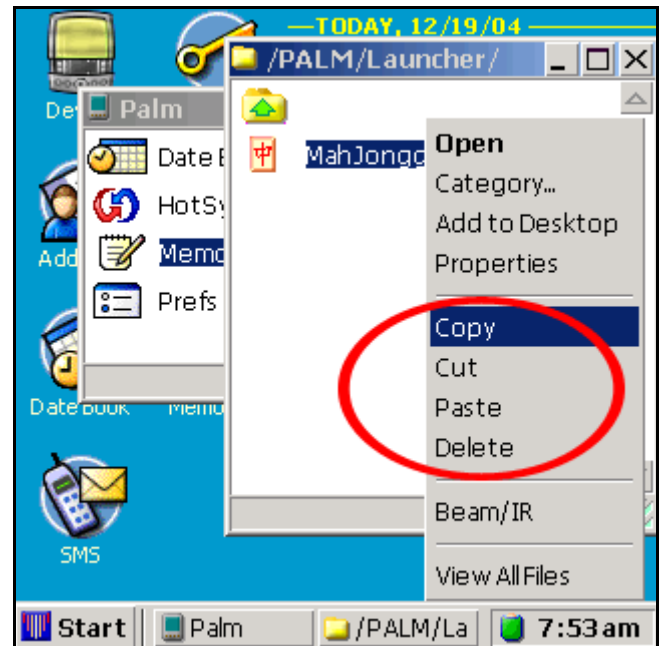


Fig 12 – The 4 commands available for an application on a writable expansion card

Copy, Cut, Paste And Delete

- Delete is not available on ROM located objects and on read-only cards.
- Cut from one of the above locations will paste at the destination but will not delete the source files.
- Paste on read-only cards is not available.
- You can copy once and paste the same content multiple times on multiple locations.
- After each Paste operation you will see a report message.
- Deleting an application deletes the application and all its files and databases located in the same storage (internal RAM or same folder on an expansion card)

To Move Apps/Files around

- In Filer tap-n-hold on a name to pop up the menu and select "Copy" or "Cut".
- Navigate the same (or another) Filer window to the desired destination.
- Tap-n-hold anywhere to pop up the menu and select "Paste".

Folders On Expansion Cards

- You can create new folders on writable expansion cards – bring-up the filer menu and select "Create Folder...".
- A folders on writable expansion card can be deleted if there are no other files or folders inside it (if the folder is empty) – select the folder, and select "Delete" from the Filer's menu.

Sending Applications and Files

WinLauncher supports sending files and applications by the following two methods:

1. Infrared.
2. Bluetooth™.

Infrared is available on all PalmOS® devices that WinLauncher can run on and Bluetooth™ may or may not be available.

Sending Tips

- Copy-protected applications and databases can not be sent.
- If your device has not Bluetooth™, then the "Send/Bluetooth" menu item will not be available at all.
- Actual sending is performed by the PalmOS®. WinLauncher only reports that files have been given to PalmOS® for sending correctly.
- Sending files does not guarantee delivery or acceptance from the other party.

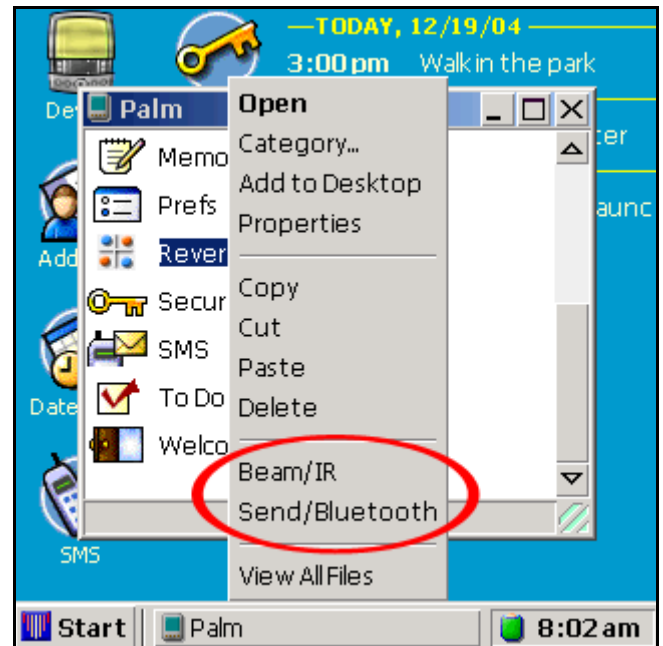


Fig 13 – The Send Commands available for a file without copy protection.

Working With Files

- If you are not experienced with PalmOS® we advise you not to use this feature.

Filer can give you access to all files and databases on your device. Just use the “View All Files” command to switch the browse mode.

Then all the databases and files will be visible in Filer, outlined as follows and in this order of precedence:

- **Bold Green** – applications;
- **Red** – read only files;
- Grey – “system” files – files with creators all lowercase letters (like ‘palm’).
- Black – all other files.

When in this mode, all file operations work on the selected file only.

In this mode copying of a game application will copy the .prc file only, while when in “View Apps Only” the copy operation will involve the .prc, the overlay (.oprc) and any bundled databases (if the .prc has its bundled bit set, too).

To return to “apps” mode, use the same menu item (it’s text will be “View Apps Only”).

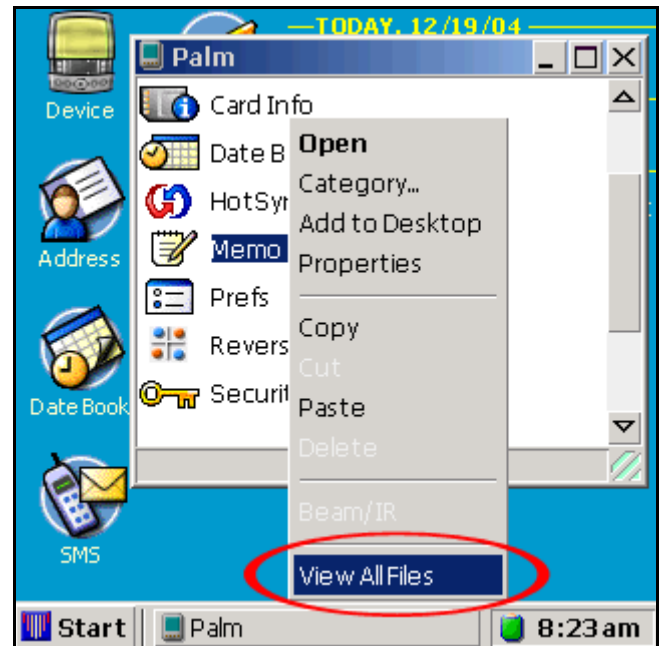


Fig 14 – The command that switches Filer’s view mode. Use the same menu item to switch back to applications list only.

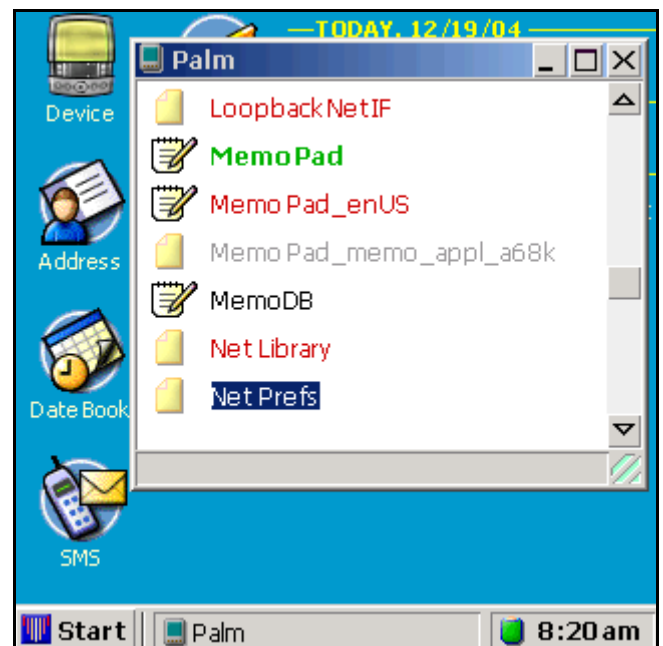


Fig 15 – Filer shows all files and outlines types with different colors.

Device, Storage, Applications and File Properties

WinLauncher can show different properties of your device, expansion cards, applications and files.

Device Properties

Tap and hold on the “Device” icon on the main screen and select “Properties” to view a screen similar to this at right (Fig 16).

Storage Properties

When Filer is opened, it shows you a list of entries for each storage entity on your device – your first RAM/ROM card starts the list, and then any other internal and external storage cards are listed.

Tap on any of these and select “Properties” to see the available information.

Application and File Properties

Select an application or single file in Filer and select “Properties” from the menu.

When Filer is in the “View Apps Only” mode, the Properties dialog will list the total size and number of files that belong to this application.

Properties Tips

- All Properties windows show you the PalmOS® version of your device and the ROM serial number, if the latter is available.

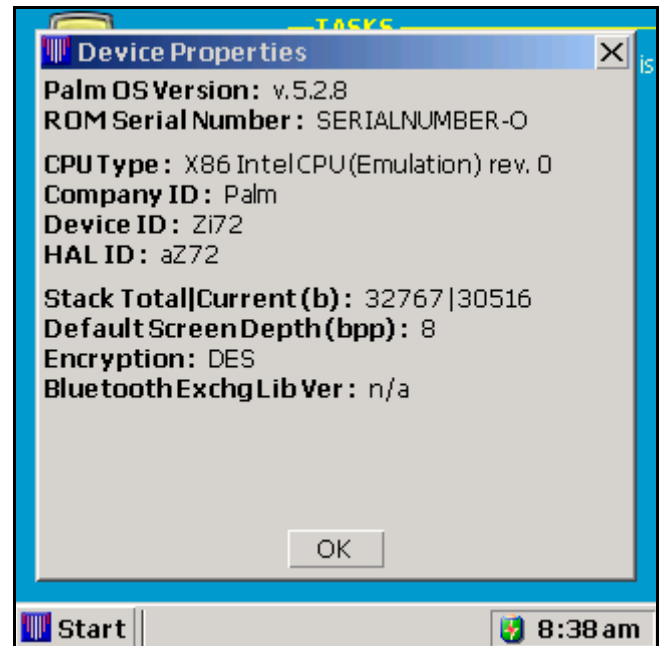


Fig 16 – The Device Properties window. Tap “OK” to close it.

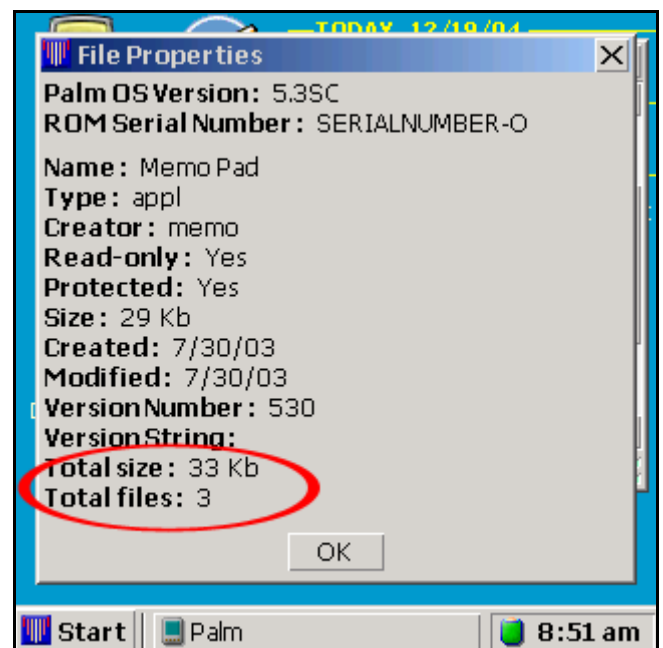


Fig 17 – A File Properties windows showing the total size and databases number that belong to the application (including the main application file).

Fast Boot, Expansion Cards Cache & Auto Refresh

WinLauncher automatically selects how to start:

- to fully scan your ROM/RAM and expansion card
- or to perform a Fast Boot.

In Fast Start all information about applications is loaded from data saved during previous runs. This saves time and allows you to quickly have access to all your apps (for example, after returning from a trivial Calc computation).

Fast Start information is divided in two parts:

- information about ROM/RAM (internal memory) applications;
- information about applications found on expansion cards (SD, Memory Stick, etc);

Information for up to 3 expansion cards is stored - this allows switching cards and having instant access to your applications!

Filer And Finding Apps/Files

- If after a Fast Start an app is missing – just go to the supposed app/file location!
- Navigating folders with Filer after automatically scans them again – Auto Refresh!

Fast Start Facts

- The internal memory will be scanned after a HotSync operation.
- And when WinLauncher is started for a first time.

Expansion Cards Cache Facts

- **!!!** If the apps on a cards were modified outside your device – the cache will not be correct!
- **!!!** In case of incorrect cache – just open the modified folders in Filer and they will be automatically refreshed.
- Information for up to 3 cards is stored, for the most recently accessed ones.
- When new card is inserted it is automatically scanned and cached.
- After a card is removed/inserted all corresponding apps are removed/added to the start menu.

Settings

To open the Settings screen tap "Start -> Device Control -> Settings".

- Depending on your device, not all settings may be available.
- To have the settings remembered by WinLauncher, you have to quit WinLauncher – by starting any other application.

General

- Check / clear DB Cache – by default this is ON, but if you experience communication apps shut-downs or back-up apps unwanted starts – set to "off". Clearing the DB Cache generally fakes a HotSync operation on your device. This setting is recommended to be "on" in case of slow WinLauncher start and slow device performance in all applications.
- Use small icons on the Desktop – by using the small app icons, you can fit more shortcuts on the Desktop area.
- Restore DIA State – for devices with software Graffiti area: will remember and restore the task bar and Graffiti input area states (shown or hidden).
- Track recent apps in Start menu – when off, more apps will fit in the fixed shortcuts list in the left column of the Start menu.
- Restore Handedness after Reset – for left-handed users. The handedness setting of the device is lost in case of Soft Reset. Set to

"on" and WinLauncher will automatically restore the Handedness preference setting.

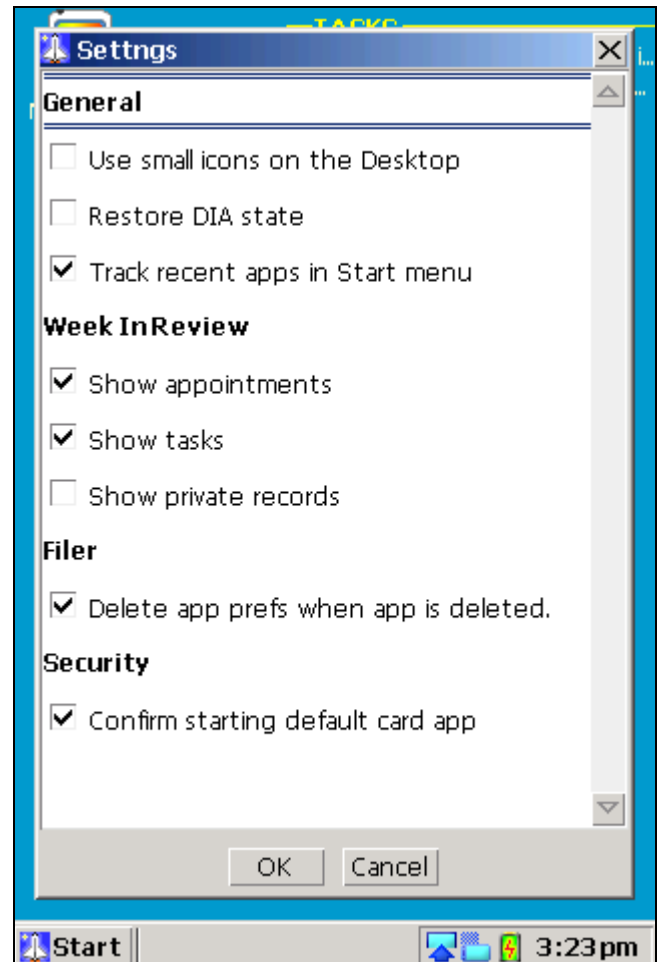


Fig 18 – The Settings Screen (there may be more settings, depending on the version of WinLauncher and your device).

Week-In-Review

- Show appointments, Show tasks – if both are off, the whole desktop area may be used for placing Shortcuts.

- Show private records – if on, private records will be shown in Week-In-Review.

Filer

- Delete app prefs when app is deleted – this helps clean up your device, by removing application's settings when the app is removed.
- Show all files – RAM – when you open a new Filer window and browse the RAM memory of your device, all files will be shown and not only the applications. You can still switch between the two views with the respective menu command. The default is "off"
- Show all files – cards and drives – like the above, but for expansion cards and internal hard drives. The default is "on".
- Do not open JPEG files – on some devices the default JPEG handling application crashes or hangs-up the device when it's started with an "open this file" command. Set this to "on" to prevent such problems.

Security

- Confirm starting default card app – some expansion cards contain "auto run" applications that should be started immediately on card insertion. When on, WinLauncher will ask you to confirm the start.

5 Way Navigator Support

You can use 5 Way Navigator to perform almost every task in WinLauncher.

5 Way Navigator Tips

- Watch for the dotted rectangle frame – it shows the currently selected (focused) item.
- The dotted rectangle is not available for Desktop items.
- Pressing Center will do an action on the focused item – push a button, scroll a list or pop up a menu.
- The four directions cycle the focused item in the current window.
- Dialogs and message boxes never lose the focus while cycling.
- Other windows lose the focus and the Taskbar is focused.
- When all controls in the Taskbar are cycled the focus is returned to the previous window.
- In menus Up/Down changes the selected item, Center executes it and Left/Right close the menu.

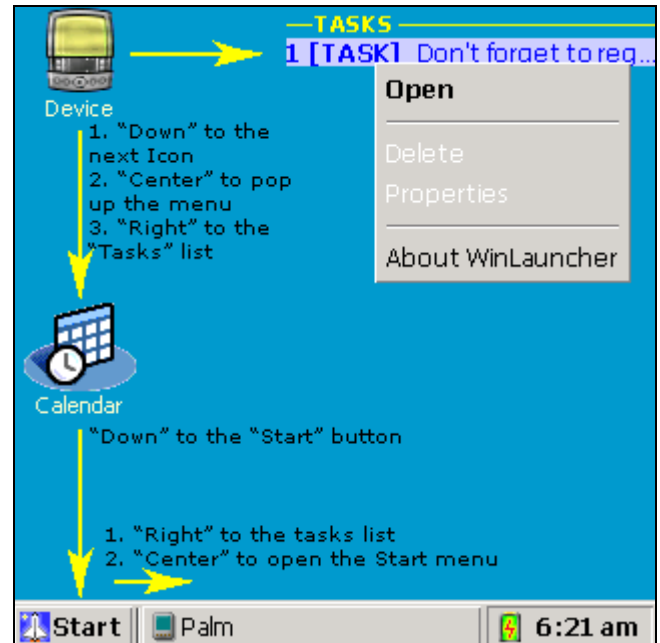


Fig 19 – 5 Way Navigation between the Desktop and the Taskbar (only some of the directions are marked)

5 Way Navigation In Filer

- Up/Down to receive and scroll the selection.
- Left/Right to leave the file list and cycle to the system buttons (Min, Max, Close) and back to the file list.
- Center to pop up the commands menu for the selected item.

5 Way Navigation In Menus

- Up/Down to receive and scroll the selection.
- Center to execute the selected item.
- Left/Right to close the menu.

Week-In-Review – Your Schedule on the Desktop

It's all about making your life easier...

Appointments and Tasks Integration

WinLauncher reads and presents all your important information – you just have to glance at it from time to time...

Week-In-Review

- Your appointments and tasks are listed on date basis.
- Each day has its date and weekday shown in yellow and the records for that day follow in white.
- For each appointment the start time is shown at the beginning of the line.
- Each task with a due date set is shown in the list for the respective day (after the appointments for that day) and is marked with the label "[Task]"
- Task that have no due date set are shown under the label "Tasks".
- The Week-In-Review shows information for today and up to 7 more days ahead – a total of 8 calendar days.

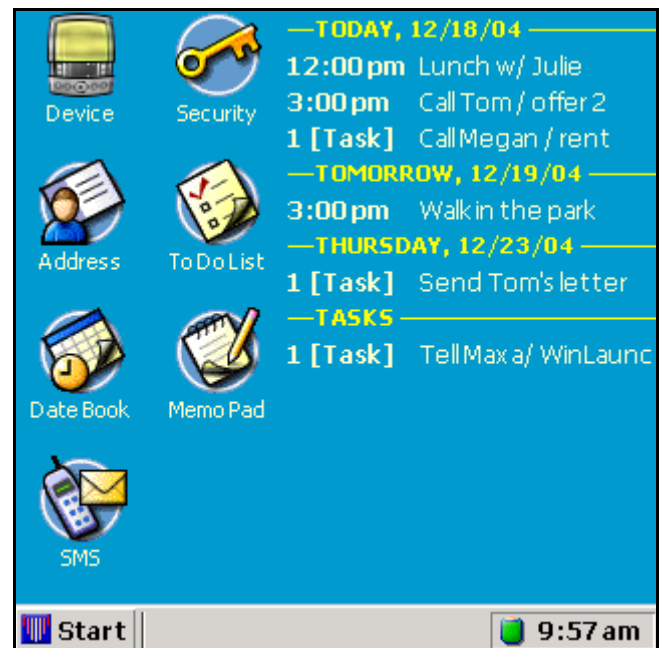


Fig 20 – Your current list of appointments and tasks is shown on the right side of the main screen.

Tap a line to open the corresponding application and record.

Display Order

- As the screen is limited, the order of showing records is as follows:
 1. Today.
 2. Tasks with no due date set.
 3. Tomorrow.
 4. The next 6 days.

DateBk5, Agendus, DateMan and Month Planner Support

If you have DateBk5, Agendus, DateMan or Month Planner installed and you want to one of these applications to be opened when you tap on a Week-In-Review record, then please, do the following:

Select Your PIM Application

- Tap on "Start -> Device Control -> Select PIM Application..." (see Fig. 21 at right).
- WinLauncher will search for supported PIM applications and will offer each one found to become the "active Week-In-Review application".
- The selected application will be opened each time you tap on a Week-In-Review record.
- Currently supported applications are:

BeyondContacts (please, check the section for this app, below, for more details!);

Agendus;

DateBk5;

DateMan;

Month Planner;

The built-in Calendar and Tasks applications.

- You can change the selection any time you want.
- Mail us (at support@aylin.biz) if you want another PIM app supported.

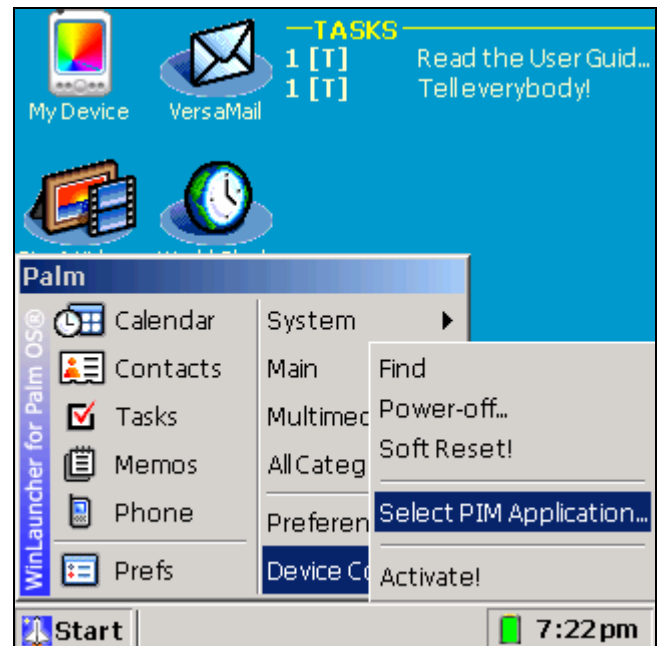


Fig. 21 – "Select PIM Application"
selects the application to be
integrated with Week-In-Review

Beyond Contacts and Key Suite Support

Please, check the previous section (and Fig. 21) to see how to set WinLauncher to work with Beyond Contacts!

Beyond Contacts Facts:

- We made this without any support from Dataviz, so please send us feedback!
- We made it using version marked as 3.008.
- Support with earlier versions is expected, but not guaranteed! You may safely try - no data will be damaged!
- If you hit a task or appointment that WinLauncher is not representing as Microsoft Outlook does, please, send it from your Outlook to support@aylin.biz along with an explanation of the error.
- Please, do not send tasks and appointments that are shown differently than in Beyond Contacts – we saw a lot of “differences” in Beyond Contacts and followed the Outlook conventions.

KeySuite Facts

- We made this without any support from Chapura, so please send us feedback!
- KeySuite version 3.50 was used as base version.
- Working with earlier versions is expected, but not guaranteed! You may safely try – WinLauncher only tries to read the data and makes no any modifications!
- If you hit a task or appointment that WinLauncher is not representing as Microsoft Outlook does, please, send it from your Outlook to support@aylin.biz along with an explanation of the error.

New built-in PIM applications – Calendar and Tasks

On some newer (2004 and 2005; Treo 650, Tungsten T5, etc) devices, the built-in PIM applications are new and so are the formats of the records these apps store.

Generally, the new apps can store more information about each record.

The new applications have different names:

- Calendar replaces Datebook;
- Tasks replaces ToDo.

Since v. 1.08 WinLauncher supports the format of the new PIM databases.

As WinLauncher accesses these databases directly, it no longer depends on the “DataManager patch” – a piece of software built in the devices to “translate” between the newer and the classic data formats.

Since some third party apps, like DateBk5, offer the ability to remove this compatibility layer, you can safely do so - provided you have read the instructions and the expected results list.

Desktop Wallpaper / JPEG Backgrounds

WinLauncher can use JPEG files and make backgrounds for its main screen.

Note! Only JPEG files that are saved on an expansion card can be used for wallpapers.

Note! Progressive JPEG files are not supported due to memory limitations.

To Set A Wallpaper

- Open a Filer window and navigate it to the folder where the JPEG file is.
- If the .jpeg files are not visible: tap-n-hold for the menu and select the "View all files" option to see the JPEG file.
- Tap-n-hold on the JPEG file to pop up the menu again and select "Wallpaper..."
- In the dialog that opens select the desired placement and tap OK.
- WinLauncher will prepare the Wallpapers (1 for each screen orientation your device supports) and then the JPEG file is no longer needed.

To Remove The Wallpaper

- Tap-n-hold anywhere on the desktop to popup the menu.
- Select "Remove Wallpaper..." and confirm the removal.

Wallpaper Placement Options

- **Fit Whole Image** – the image will be resized to fully fit on the desktop. Depending on the size of the image there may be empty areas at top/bottom or left/right of the desktop.
- **Fit Width/Height** – the image will be resized to fully cover the desktop. Depending on the size of the image top/bottom or left/right parts of the image may not be visible.
- **Center** – the image will not be resized and its central part will be used for background. If the image cannot cover the entire desktop, there will be empty area around it.
- **Tile** – the whole desktop will be covered with consequential non-resized copies of the image. This option is useful for images that are smaller than the desktop size (the desktop size is equal to the maximum screen size of your device minus the height of the taskbar, which is currently 24 and 19 pixels for the HigRes and the LowRes versions respectively).
- **Stretch** – will cover the desktop exactly, but may change the aspect ratio of the image. Suitable for abstract images.

Registering WinLauncher

Registering

WinLauncher is a shareware product. When not registered, each time WinLauncher is started it will show it's About box – as a reminder...

No functions are disabled or limited in the demo version – the only “difference” is the About box showing!

Benefits Of Registration

- Fully enjoy this piece of art!
- WinLauncher is expected to be branded to regular and Professional versions in the next months – at the moment of branching, all registered users will be considered Professional version users and will continue to receive the upgrades of the Professional version for FREE.

Registration Note!!!

- The registration code is based on your HotSync ID and you have to supply it when registering.
- Your HotSync ID is shown at the top of the “Start” button window – see Fig 23.
- **Your HotSync ID is CaSe sEnSiTive!**
- On Fig 21 a fiction name “Palm” is written and on your device you will see your HotSync ID at the same place.

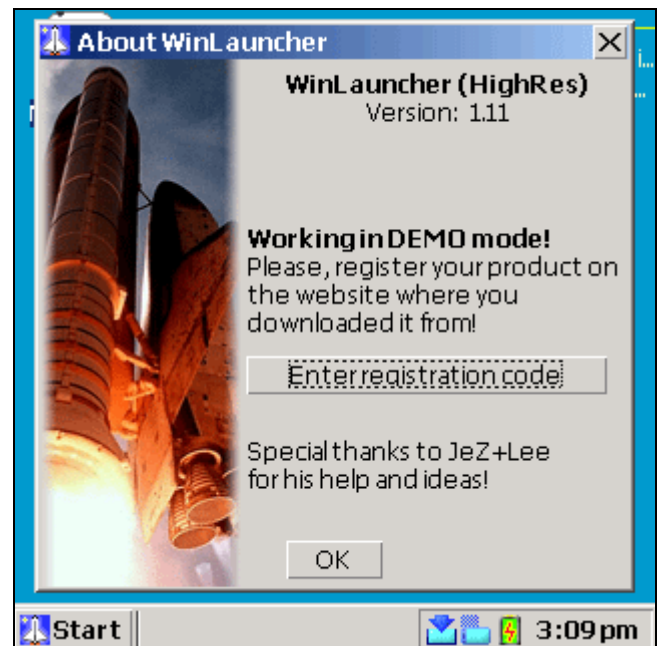


Fig 22 - WinLauncher's About screen, with the button to use when entering registration code.

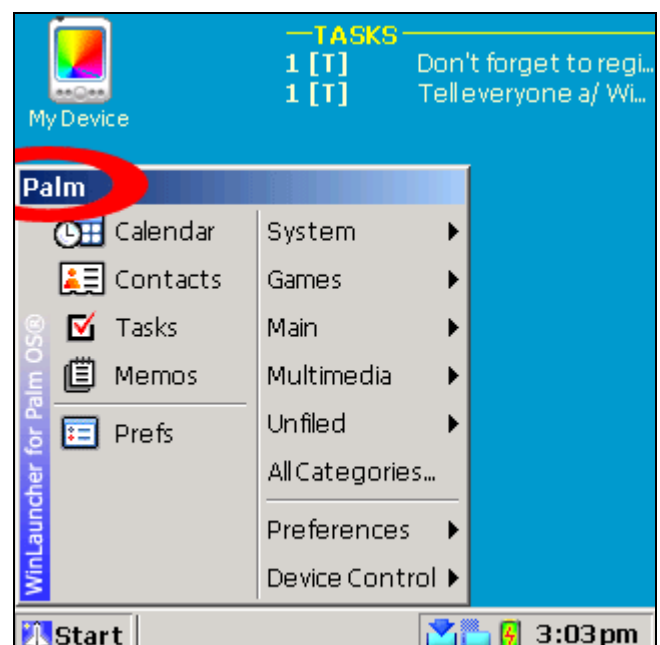


Fig 23 – The top of the “Start” window contains your HotSync ID (instead of the word “Palm” shown here). This ID you have to supply when registering!

Upgrading WinLauncher

When a newer version of WinLauncher is available, just download it and install it on your device with a HotSync™ operation.

This is it, WinLauncher is upgraded!

There are no any other actions, tasks or preparations to be made.

Feedback and Support

Contacting Aylin.biz

Our website address is:

<http://www.aylin.biz>

The support email address is:

support@aylin.biz

You make the difference!

We'll be glad to hear your feedback and ideas on WinLauncher!

This product is made because of a customers demand and will be developed further again by the customers demand.

And finally,
Have more fun!

Legal

All brand names, trademarks and other registered names mentioned in the text (like Palm OS, Graffiti, HotSync, Microsoft, etc) belong to their respective owners.