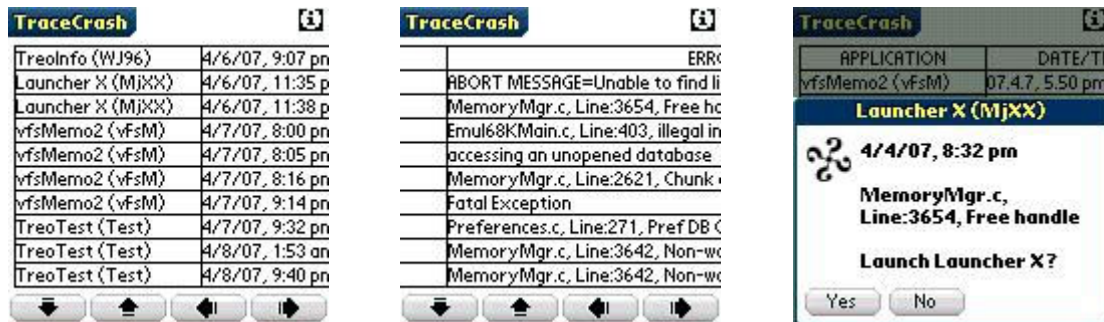




## TraceCrash 1.1

by Suntzu



**TraceCrash** is designed to trace or find out the application and the cause why the Treo device crash. This will give you the right information which applications have conflict. And let you decide which app should be removed or replaced by a different app.

- The 1st column contains the application name, 2nd is the date and time when the crash occurred, and last column is the detailed reason behind the system crash.
- Using the Grid view, you may launch the app by tapping on the row. It will also display the crash summary.
- 5-way nav support.
- The buttons located on the bottom of the grid will navigate you thru the grid.
- The 4-letter word on the Application's name e.g.(memo) is the app's creator id.
- *Unknown* app means that the application is already been deleted or the creator id has been changed.
- On Treo 680 & 700p, the system crash log is really getting big as time goes by. Clear crash log button allows you to clear the system crash log and save some RAM space.
- Option to clear the crash log upon exit.
- Option to view the last 10, 30, and 50 crashes. The lower the number, the faster the viewing. View 10 crash logs is the default.
- If in anyway, you have problem with the sorting. It is best advised to clear the crash log first.

## **Version history:**

1.0 April 17, 2007

- Initial public release.
- Supports Treo 600, Treo 650, Treo 680, and Treo 700p

1.1 May 5, 2007

- Speed improvement.
- Added the Clear Crash Log button
- Option to clear the crash log upon exit
- Option to view the last 10, 30, and 50 crashes
- Fixed sorting thru clear log options

**Suntzu**

Copyright © 2007.

All rights reserved.

**For support: [suntzu@palmxp.org](mailto:suntzu@palmxp.org)**