

Quizzler version 4

Table of Contents

About Quizzler	2
The Quizzler Classroom	2
Quiz Databases	4
Installation	5
Registration	6
Starting Quizzler - The Quiz List Screen	6
Import	7
Quiz Options	8
Answering Quiz Questions	9
My Scores & Other Scores	12
Preferences	12
Making Your Own Quizzes	13
Quizzler File Format	14
Working With Pictures	20
Version History	23
Credits and Contact Info	25

About Quizzler

Quizzler runs on handheld Palm and Pocket PC handheld platforms, and Windows and Macintosh desktops. The Quizzler application reads quiz database files that contain questions on any subject imaginable. Quizzes can be educational (math, science, vocabulary) and/or entertaining (trivia, riddles). Since you can create your own quizzes with Quizzler (even Mac users!), there is no limit to what you can do with it.

Once you have a quiz database file, you can use Quizzler to make learning fun. You can choose from a variety of formats: multiple choice, true and false, flash card, or reverse questions. You can answer the questions in order or randomly. There is even a Speed Game option where you try to beat the clock. Quizzler keeps track of your score as you go, and remembers your last score for each quiz.

Best of all, Quizzler is free! You can find many free quiz files in the quiz library at www.PocketMobility.com.

For quiz jockeys who need more advanced features, we also offer a commercial version for Palm called Quizzler Pro. This includes features to make it easier to create very large quizzes, add pictures, add copy protection and certification features, create exams, add explanations, and track the scores of others. Once a quiz has been created with advanced features using Quizzler Pro, all quiz features are available using the free version of Quizzler.

Quizzler Maker is product for Windows and Macintosh that lets you create quizzes for the Palm using a simple, easy to use interface, without the need to know the Quizzler file format. You can download a free demo at www.PocketMobility.com.

We also have a product called Math Wizzer that will quickly generate mathematics quizzes for you in a snap. You can choose from addition, subtraction, multiplication, division, number series, and algebra -- or create a mix.

Quizzler - Free quiz reader for Windows, Macintosh, Palm, and Pocket PC

Quizzler Pro - Enhanced quiz reader/creator for Palm

Quizzler Maker - Authoring tool for Windows and Macintosh

Quizzler Gradebook - Score analysis tool for Palm, Windows, Macintosh

Quizzler Math Wizzer - Math problem creator runs on Palm

Quizzler quiz files have the same file format on all platforms!

The Quizzler Classroom

The Ultimate Quizzler experience takes advantage of the entire family of Quizzler products in the classroom. The Quizzler Instructor bundle includes Quizzler Pro, Quizzler Maker, Quizzler Gradebook, and Quizzler Math Wiz together at a substantial savings. Here's how you put them all together:

Step 1 - Create Your Own Quizzes

With the free version of Quizzler, you can create quizzes by typing the questions and answers into the Memo Pad that comes with your Palm, and then you just "Import" the quiz

from Quizzler. You just need to learn the simple Quizzler quiz format. Type the text from your desktop and do a Hotsync, or type in right on your handheld.

Using Quizzler Maker is the **easiest** way to create quizzes on a desktop computer. Just type in your questions and answers, select the option to build the quiz, and transfer the quiz to your handheld. This program is designed to be simple and easy to use. The free demo lets you create quizzes with up to 10 questions.

Quizzler Pro is the option for **power users**. Type in the quiz using your favorite word processor, convert the file to "Palm Doc" format, transfer the file to the Palm, then "Import" from Quizzler. This lets you tap into all the advanced features that Quizzler has to offer, and handle large quizzes easily.

For math quizzes, Quizzler Math Wizzer is, well, it's a Wiz! Select the type of quiz to generate, the number of questions, and presto! the quiz is built. Imagine building a quiz with 100 mixed multiplication, division, and number series problems in 10 seconds...

Step 2 - Beam Quiz To Students

Once you have your quiz on your Palm handheld, just "Beam" it to your students. For testing situations, build the quiz in "exam mode" for special features such as anti-cheating (users cannot leave the quiz once it has begun), no score feedback until the quiz is completed, the ability to change answers before the quiz is complete, etc. Third party companies are devising solutions to broadcast a quiz to many students at once.

Step 3 - Students Beam Results Back

After students are done with their quiz, they get to see the score immediately. No more waiting and worrying for them. They enter their name and beam the quiz results back to the teacher (Quizzler Pro is required to receive these beamed scores). Third party companies are devising solutions so that many students can beam scores at once.

Step 4: Analyze Results Instantly

This is the most amazing part of the process for the teacher. From Quizzler Pro, go to the "Other Scores" screen to see all the scores that were beamed to you. Select a quiz and tap the "Export" button to consolidate all these scores into one file. Now run Gradebook and you will see the file that you exported. All of this is done on your Palm handheld.

Open the file from Gradebook to see all the individual scores and the average score. You can see a list of questions, and the percentage correct for each question, to quickly spot those topics that gave the students trouble. Even better, you can tap on one of those tough questions and find out the percentage for each individual answer. Then you can list the students who missed that question.

We also have a desktop version of Gradebook that will read the same score files and display the results for easy copy/paste on your desktop.

Now, instead of spending hours grading the tests, you can determine in seconds how the class did, what topics you need to review, and think about new, improved ways of teaching the material based on the test results. OK, would you rather go back to the paper and pencil method?!?

Quiz Databases

A quiz database file contains all the questions and answers, as well as author information and optional features that quiz authors can embed in the quiz. This allows quiz authors to freely distribute quizzes yet still receive due credit and protect their hard work. Quizzler writes the last quiz score in the quiz database file as well, so this information goes along with the database file.

New quiz databases can be easily created for Palm by using the Memo Pad application (see “Making Your Own Quizzes” section below), or you can use Quizzler Maker to target any platform. Finished quiz database files always end with “.pdb”.

After you install a quiz database on your Palm device, the next time you do a HotSync with your desktop computer, the quiz database file ending in “.pdb” will be copied up to your desktop computer and you can find the file there. (The Backup conduit must be enabled during HotSync) You can easily beam quiz database files to other Palm users.

Quizzler Pro lets you create large quiz files on Palm by importing “Palm Doc” files, so you can use a word processor like Microsoft Word to create your quiz file. With a utility called “pDocs”, you can export the file from Word to your Palm handheld. There is also a free program called “Make Doc” (MakeDocW.exe) that will convert NotePad files to a format the Quizzler Pro can read.

Quizzler Pro and Quizzler Maker also support the addition of pictures to your quiz file. Our web site contains tech notes with all the details on how to use these third party programs and advanced features of Quizzler Pro.

Installation

Downloading

When you download the Quizzler application, the result is probably a file ending with “.zip” such as “Quizzler.zip”. This is a compressed, or zipped, file format so you need to decompress the file. Some browsers may automatically decompress the files for you, so if you see a folder containing a .PRC or .EXE file then you can skip this step.

To decompress a zipped file, you need a program like WinZip or Alladin Expander (Windows), or Stuffit Expander (Macintosh). Select the “.zip” file with one of these programs and the file will be decompressed. For Windows XP users, the zip file will appear as a folder; just drag the files out of the folder and put them somewhere else (like the desktop).

System Requirements

Palm:

- Palm OS 3.0 or higher (Palm III or later handheld model)
- Approximately 75 KB of RAM, plus room for quizzes

Pocket PC:

- Any device running Pocket PC or Windows Mobile
- Approximately 50 KB of RAM, plus room for quizzes

Windows and Macintosh

- Windows 95 or later
- Macintosh running MacOS 9 or 10 (untested on earlier versions)
- Approx. 1.7 MB of disk space, 2 MB RAM

Installation

Palm:

The Quizzler application, as well as Gradebook, Math Wizzer, and some sample quizzes, are stored inside a file called “Install_Quizzler.prc”. Once you load this file onto your Palm, just tap on the installer icon to complete the installation and all the files will be expanded.

Pocket PC:

The Quizzler files are stored in an automatic installer (.exe) that you run on your Windows PC. Just run the installer on your PC and connect your handheld to synchronize the files.

You can find Quizzler by going to the Start Menu and choosing “Programs”. All the sample quizzes are stored inside a folder named “Quizzes” in your “My Document” folder.

Windows and Macintosh

The desktop versions of Quizzler do not require special installation. Just copy the single application file anywhere you like. You need to run Quizzler first, and then click the “Open” button to open a quiz file ending with .PDB.

Pocket PC Quizzler Features

Quizzler for Pocket PC currently does not contain all the features of the Palm version. You cannot create new quizzes, but you can read the same quiz files that are used by the Palm version. Quizzler Pro (the commercial version) is not available for Pocket PC. Stay tuned for updates to the Pocket PC version.

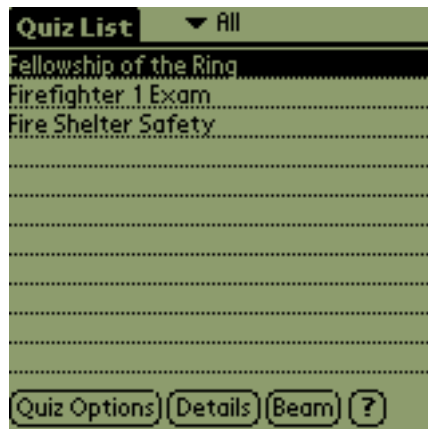
Registration

You can upgrade from Quizzler to Quizzler Pro for Palm just by entering a Key Code. Select the “Upgrade Quizzler Pro” menu item to do this. You will be asked to enter a Key Code that is related to your Palm user name. If you provided your Palm user name during purchase of Quizzler Pro, then you will receive an email with your custom Key Code. You can also obtain your custom Key Code by visiting www.PocketMobility.com.

If you enter an incorrect Key Code, then you will receive an error message. You can also select the “About Quizzler” menu item to see what version you currently have. The name of the program will say “Quizzler” or “Quizzler Pro” in that screen.

Some commercial quizzes also require a key code. Go to the “Quiz Options” screen and tap the “Register” button to enter the code for a specific quiz.

Starting Quizzler - The Quiz List Screen



When you launch Quizzler for Palm, you see the Quiz List screen. This screen shows you a list of all quiz database files on your handheld device. Select a quiz from the list by tapping on it, then choose one of the following actions. On the Pocket PC and desktop versions of Quizzler, the first screen is the Quiz Options screen (see below).

Buttons:

You can use the “up” and “down” hardware buttons to scroll, or tap the up and down arrows on the Palm screen, if your list of quizzes is more than one screen.

Tap the Card button in Quizzler 3.5 or later to see quizzes stored on a memory card.

Quiz Options - Go to Quiz Options screen to view more info about this quiz and begin taking a quiz.

Details - Bring up a windows that lets you change the category and delete the quiz database file

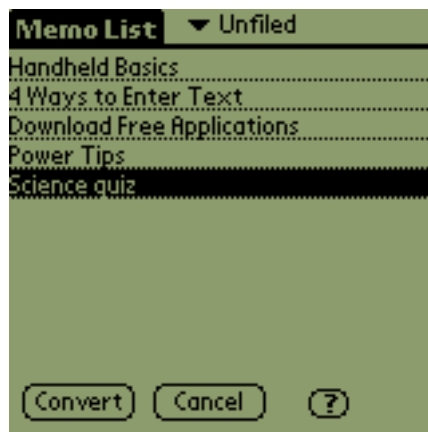
Beam - Beam a quiz database file to another device

There are also two relevant menu items:

Import Memo - Import a new custom quiz you created with the Memo Pad application.

Import Doc File - Import a new custom quiz you created as a Doc file. For example, you may have used Microsoft Word to create a quiz, and exported it to the Palm with the pDocs utility. Quizzler Pro is required to import Doc files.

Import (Palm only)



The Import screen on the Palm version shows you a list of all the memos in the Memo Pad application, as long as there is more than one line in the memo. If you have created your own quiz here, you can select that memo and tap “Convert” to convert the memo into a quiz database file.

In Quizzler Pro, you can import your quiz from a Doc file. “Doc” is a format that is commonly used for text files on the Palm, and there are many third party tools available that allow you to convert desktop files into Doc files for your Palm. Since Doc files can be larger than Memo Pad memos, you may find this more convenient.

If you try to convert a memo that is not in the special quiz format, you will get unpredictable results.

You can use the “up” and “down” hardware buttons to scroll, or tap the up and down arrows on the Palm screen, if your list of memos is more than one screen.

When you create a new quiz with Quizzler 2 or later, you will be creating a new style quiz that cannot be seen with older 1.x versions of Quizzler.

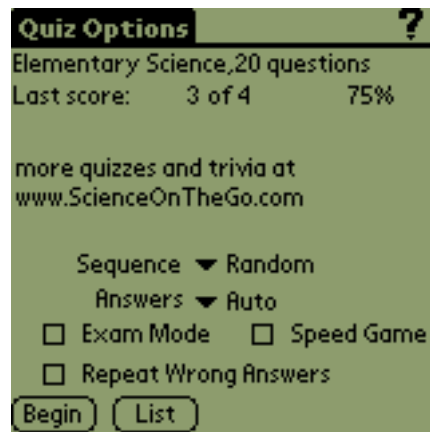
Creating Large Quizzes

The current version of the Memo Pad application only lets you create memos up to 4000 characters long. If you want to create a quiz that is larger than this, you need to break up the quiz into separate memos under 4000 characters each, **with each memo having the same title**. When you try to import and convert a memo with the same title as an existing quiz database, you will be warned and given the option to append the memo questions to the bottom of the existing quiz database (the comment line of the subsequent memo will be ignored). In this fashion you can create very large quiz database files that exceed the 4000 character limit.

The other alternative is to create one single large text file using your favorite word processor on your desktop computer, then convert this to a “Doc” file using a third party program like “pDocs” or “TealDoc”. You can install the Doc file on your Palm and import all the questions at once. Quizzler Pro allows you to import from Doc files.

Quizzler Maker for desktop computers provides yet another way to create large quizzes more conveniently.

Quiz Options



The Quiz Options screen will show you how many questions in the selected quiz, the last score, and a comment field that was written by the quiz author. Some quizzes may contain extra information that you can see by tapping the “More Info” button.

The Pocket Pc and desktop versions of Quizzler have an Open button on this screen to open the current quiz file.

Tap “Begin” to start answering questions, or “Quiz List” to return to the Quiz List screen. At the bottom half of the screen there are options you can choose before taking the quiz.

Chapters - Some larger quizzes may make use of “chapters”. For a quiz with chapters, the list of chapters can be seen by tapping a button to the right of the “Chapters” label. You can choose to take questions for one chapter only, or all the questions in the quiz at once.

Sequence - You can answer the questions in random order, or sequential order, by making your selection here.

Answers - You can choose your quiz format by making your selection here:

Multiple Choice - All answers will be displayed. The order of the answers is random. See Multiple Choice Questions below for more information.

True and False - Only one answer is displayed. There is always a 50% chance that the correct answer will be displayed, no matter how many other answers are provided in the quiz database. See True and False Questions below for more information.

Flash Card - No answers will be displayed at first. You make a guess, then reveal the answer to see if you are correct. See Flash Card Questions below for more information.

Reverse Questions - Like Flash Card, but you are shown the answer and must guess the question.

Auto - This option will display the question in Multiple Choice mode if there is more than one answer, or Flash Card mode if there is only one possible answer. This allows you to have a “mixed mode” quiz with both types of questions.

Repeat Wrong Answers - After answering all questions, any questions answered incorrectly will be re-asked.

Exam Mode - There are two ways to get into Exam Mode. A quiz can be specially designed so that it only functions in this mode (using the “#exam” tag), or you can choose this as an option by checking the check box. There is just one difference: if a quiz has been specially designed to only function in exam mode, then you may not press any hardware button to leave Quizzler while taking the exam. The only way to leave the exam is by pressing the Stop button or answering all the questions.

When in exam mode, the answer mode is automatically set to “Auto” mode, and you will not get any feedback when you answer a question right or wrong. You may also change your answers as many times as you like. When you are finished with the exam, you will see your score then.

Speed Game - Check this option to play against the clock. In the Speed Game, each question is worth 10 points. A point is subtracted for each second it takes before you get the correct answer. For example, if it takes you 4 seconds to guess the correct answer, you will receive 6 points for that question. you always get at least 1 point for a correct answer.

The Speed Game works best in Multiple Choice or True and False formats.

Register - Commercial quizzes will show a “Register” button on the Quiz Options screen until you enter your registration code. Note that this button only registers a quiz, and does not upgrade the application itself to Quizzler Pro.

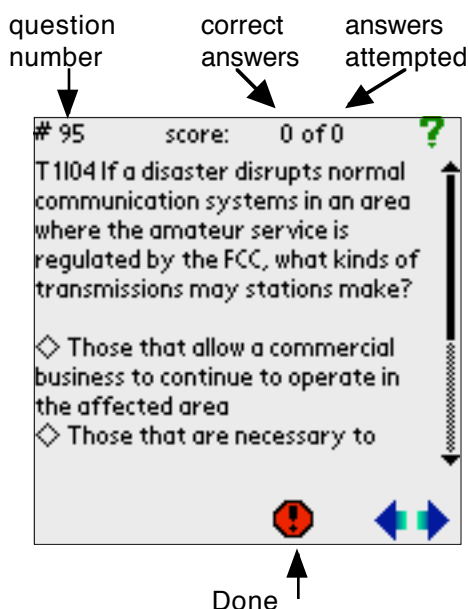
Score Code - This menu item will display a special code that corresponds to your score. Not all quizzes make use of this feature, but it provides a means to verify the score that you received for certification purposes. The quiz author can verify that your score code corresponds to the score you reported.

Last Score - Some quizzes include a feature that hides your last score, so it may not be visible to you. Once you begin a new quiz, your last score is reset to 0 of 0.

Answering Quiz Questions

The questions screens will look slightly different, depending on which quiz format you have

selected. In all cases the top half of the screen is the same:



The “question number” is shown in the top left. This can be useful if you want to return to a specific question later using the “Goto Question” menu item. The current score is shown at the top right as “1 of 2”, which indicates 1 correct answer so far, and 2 questions attempted so far.

In Exam mode, the score is hidden, and you may change your answers as often as you like without affecting your score.

If you skip a question and don’t make any attempt to answer, it does not affect your score.

If an answer will not fit on one line, a scroll bar appears on the right, allowing you to see the rest of the question. You can also scroll by pressing the “up” and “down” buttons on your handheld device. If you are already at the bottom of the scrolling question when you press the “down” button, it will have the same effect as the “Right Arrow” button; i.e. you will go to the next question.

The question is displayed under the question number and score, followed by the answers (the answers area will be different for each quiz format). At the bottom of the screen there are always three buttons:

Right Arrow - Skip to the next question. Your score is not affected if you didn’t make any guesses. You may also press the “down” hardware button to go to the next question. Some quizzes will hide this button.

Left Arrow - Go to the previous question. Your score is not affected if you didn’t make any guesses. You may also press the “up” hardware button to go to the previous question. Some quizzes will hide this button.

Done - Finish taking the quiz and return to Quiz Options. This is only necessary if you are quitting the quiz prematurely.

Explain - If a quiz has been built with explanations, then you can click this button to get an

explanation of the answer. You should pick an answer **before** tapping the Explain button to get full credit for a correct answer.

And there are menu options for navigation:

“Goto Question” menu item - Go to any question number you enter. For example, type “3” to jump directly to question #3 (not necessarily the third question if you are taking the quiz in random order).

“Find” menu item - If you are using Quizzler Pro, or any registered commercial quiz, you can use the “Find” option to look for words in the quiz, and go directly to that question.

Multiple Choice Questions

In a Multiple Choice format quiz, all answers (as many as 10) will be displayed. You tap on the correct answer to move to the next question. If you tap the wrong answer, your score will update in the top right corner, but you will stay on that question. Keep guessing and tap the correct answer to move on. You are only scored on your first attempt.

Some quizzes allow more than one correct answer, or a variable amount of points for each answer.

True and False Questions

In a true and false format quiz, one answer is displayed, and you must guess whether it is correct or incorrect. Even if there are 3 or 4 possible answers in the quiz database file, there will always be a 50% chance of the correct answer being displayed.

After you make your guess, the next question is displayed and the score updated.

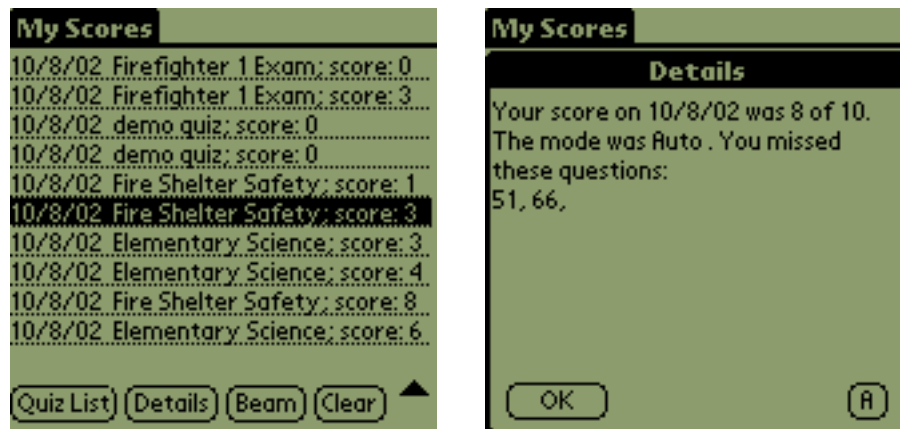
Flash Card Questions

In a Flash Card format quiz, no answer is displayed at first. You must guess the correct answer, then tap “Show Answer” to see if you were correct. After seeing the correct answer, score yourself by tapping either “I was correct” or “I was incorrect”.

Reverse Questions

This is just like Flash Card, but you are shown the answer and must guess the question.

My Scores & Other Scores (Palm only)



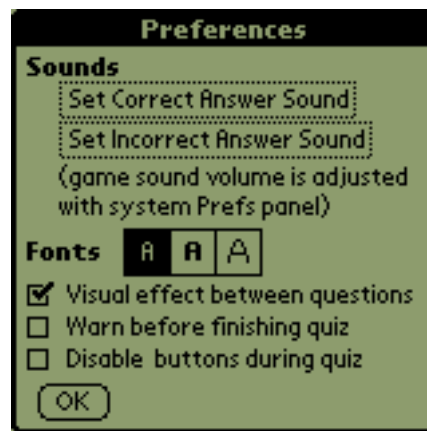
As you complete quizzes, Quizzler keeps track of your most recent scores. You can see these scores by selecting the “My Scores” menu item. Actually, alot more information than just the score is stored here. If you have Quizzler Pro, you can tap the “Details” button to see more details about the quiz score. The Details window will show you what options were in effect for that quiz (multiple choice, flash card, exam, etc.), and exactly which questions you got wrong.

You may also select any score and beam this information to another Quizzler Pro user. That score will appear in the other user’s “Other Scores” screen. This is a very handy feature if you are giving a quiz to several students, for example, and want to collect all those scores for your grade book.

Quizzler 3.4 and later features an “Export” button on this screen. This is used to export the scores to a file that Gradebook can analyze and do reports on. Just tap on a quiz score, then tap “Export”. All the other scores associated with the selected quiz score will be exported to a file. Then run Gradebook to look at these score files.

Preferences (Palm only)

Select the “Preferences” menu item to choose optional sound effects and font sizes.



Here you can select a sound to play after any correct answer and/or incorrect answers.

You can also select the font to display the questions and answers with, and whether you want a visual effect to display in between questions.

“Warn before finishing quiz” - You will get a warning before you finish a quiz. This is useful to prevent accidentally leaving the quiz and locking in your score (perhaps you skipped some questions you want to come back to).

“Disable buttons during quiz” - This will lock out all the hardware buttons except the up and down scroll buttons, making it impossible to leave a quiz while it is in progress (unless you tap the “Stop” button). This could be useful in a group where you are passing the handheld around, or with children.

Making Your Own Quizzes

Quizzler Maker for desktop computers is by far the easiest way to create quizzes; just type in the new questions or import text files in the special Quizzler file format.

You can make your own quizzes very easily on the Palm by creating a specially formatted text file (the format is described below). You can create this text file in the standard Memo Pad application that comes with every PalmOS device. This means that you can either use your desktop computer (Windows or Macintosh) to enter the quiz data by pasting your text file into a memo, or if you have a Palm keyboard you can make your quizzes right on your Palm device.

Once you have created a memo in the correct format, you use the "Import" menu item on the Quiz List screen to select the memo and convert it to a quiz database file.

With Quizzler Pro, you can import your quiz data from a Doc file in addition to the Memo Pad. This works better for large quizzes that don't fit into a single memo. Our web site contains more details about dealing with Doc files and importing into Quizzler Pro.

We recommend always providing 3 or 4 possible answers so that all quiz formats make sense (multiple choice, true and false, flash card, reverse question).

You may have up to 1000 questions. When importing, Quizzler will only display the first 1000 memos or Doc files.

Memo Pad Limitation - The current version of Memo Pad for Palm only allows memos to have up to 4000 characters. To get around this limitation and create larger quizzes, just break up your quiz questions into several memos, with each memo having the same title. You can then append, or join together, your quiz memos into one quiz database file (see the section titled “Import”).

Once a quiz memo has been imported and converted to a quiz database file, it will show up in the Quiz List screen. From here, you can beam it to others. The next time you do a Hotsync with your desktop computer (as long as the Backup conduit is enabled), the quiz database file ending in “.pdb” will be copied up to your desktop computer and you can find the file there.

Quiz Authors - Please send us a copy of your quiz database file (ending in “.pdb”) so we can post them on our web site for all to share. This will help us to build a library of quizzes that will benefit everyone (original authors will get credit because of the “comment” field inside every quiz).

If you have created a commercial quality quiz and would like to sell your work, contact us about comarketing opportunities. We might be able to sell your quiz for you for a small commission.

Quiz contents are stored in an encrypted manner, so it would not be easy for anyone to copy your proprietary quiz electronically.

Email your new quiz database file to info@PocketMobility.com or visit our web site at <http://www.PocketMobility.com>.

Quizzler File Format

For the latest documentation and examples, see our web site at www.PocketMobility.com.

All Quizzler quiz files begin as plain text files using this format. Quizzler for Palm allows you to import these text files from either the Memo Pad or as Doc files, and creates quiz database files in a proprietary format. Quizzler Maker is an editor that lets you create these text files easily.

The first two lines of every quiz must begin with the #quizzler tag and the #name tag. You follow these two lines with some number of question/answer lines and other optional special tags that are described below. **(The first answer provided is the correct answer, except when using the long format)** Using these tags you can create quizzes that operate in a wide variety of ways for many different purposes.

Beginning with Quizzler 2.1, you can insert blank lines in your quiz and they will be ignored.

Here is a very simple quiz text file that does not use any optional tags:

```
#quizzler demo
#name demo
```

```
This is a demo. How do you like it?
very much;it's OK;not at all
```

```
What is your favorite color?
blue;red;green;orange
```

Required Tags

#quizzler

Every quiz must begin with this tag on the first line. This is a marker that identifies this quiz as a Quizzler quiz. You can actually put anything you want after the tag, and doing so makes it easier to identify in a list of memos.

#name x

Every quiz must have this tag on the second line. “x” is the name of the quiz as seen by the PalmOS system after importing the text file, and is limited to 32 characters. For PocketPC systems, this tag is ignored (but must still be present).

Quizzler Long File Format

There is an alternative way to create your quizzes which works better for larger quizzes. Rather than putting all the answers on one line, you can put each answer on its own line. A blank line at the end marks the end of the answers. **The correct answer is marked by a line starting with an asterisk (“*”).** In order to use this new file format, you need to use the “#longformat” tag at the top of your quiz. For example:

```
#quizzler
#name Fruit Colors
#longformat

What color is an apple?
Purple
*Red
Blue

What color is a lemon?
Green
Black
*Yellow
```

Now that the correct answer is not always listed at the beginning, you also have the option of specifying that the answers not be displayed in random order. The tag “#norandom” tells Quizzler to not randomize the order of the answers when the quiz is taken.

Note for Quizzler **before** version 4 only: Even though each answer is displayed on its own line, you still need to make sure each answer does not contain the delimiter character (used when displaying the answers on the same line), since this is still used internally. Remember that the default delimiter character is the semicolon (“;”), and if your answers contain this character, you can specify some other character with the “#delimiter” tag.

Optional Tags

#author x

“x” is a string that will be displayed on screen with the other options when a quiz is selected. Usually this will contain the author’s name and/or contact information. The string is limited to 63 characters.

#moreinfo

Use this tag to include more info about your quiz. In Quizzler 2.0, this extra info is available by tapping the “More” button on the Quiz Options screen. You might use this to include an explanation of your quiz, or a scoring table (like “5-10 correct = pretty smart”). The information you provide is limited to 255 characters.

#chapter x

Use this tag in the middle of your questions to insert chapter markers. If you are going to insert chapter markers, you should insert one right before the first question. A quiz with chapter markers will allow the user to take portions of your quiz (one chapter at a time), or the entire quiz. "x" is the name of the chapter and is limited to 23 characters.

#norandom

Use this tag to stop Quizzler from displaying answers in random order. Only makes sense when used with then new "Long" Quizzler file format. (This tag now works as expected in Quizzler 4 or later)

#longformat

Used to switch to different quiz format that is ideal for larger quizzes with longer answers. In fact, we recommend this format all the time starting with Quizzler 4. See Quizzler Long File Format for details.

#newline

Sometimes you want to insert carriage returns (line feeds) into your questions or answers to get them to look better on the screen. If you use this tag near the beginning of the quiz, then you can insert a tilda (~) and when the question or answer is displayed on screen, a carriage return will occur in place of the tilda. For example, "what is this~formula" will appear on two lines .

#delimiter x

The normal delimiter that separates answers is a semicolon. If you want to include semicolons within an answer, you need to choose a different character for your delimiter. "x" must be a single character. (There is no need for this tag when using the long file format)

#oneguess

Only one guess is allowed for each question, so if the guess is wrong, it won't be revealed which answer is correct. This only applies to multiple choice style quizzes.

#scoreatend

Use this tag to keep a user's score hidden until the quiz is over. Only one guess is allowed for each question (just like the #oneguess tag), and there will be no indication if each guess is right or wrong. This only applies to multiple choice style quizzes.

#nonavigate

Use this tag to disable all navigational functions while taking the quiz. This forces the user to answer each question in turn. This could also be useful as a "demo mode" setup in which a Palm is passed around a group and you want to keep things simple. This tag will disable the Next and Previous buttons, and the Goto menu item.

#timer x

This tag imposes a time limit for students taking the quiz. When the time limit expires, the quiz will end automatically. "x" is the number of seconds allowed for the quiz.

#useallanswers

This is a shortcut for creating a multiple choice quiz without coming up with all the possible (wrong) answers. You simply include one possible (correct) answer for each question, and while taking the quiz in multiple choice mode, the user will see 5 possible answers which have been randomly selected from all the other questions. For example, you could create a vocabulary quiz and provide only the correct answer for each question, but still take the quiz

in multiple choice mode.

#

Any tag that begins with “#” but doesn’t match a valid tag will be ignored. You can use the symbol “#” followed by a space to insert comments into your quiz text file.

##points

This tag is actually inserted after a possible answer, just before the semicolon or end of line. “x” is the number of points that should be awarded for that answer. When using “special points” in this manner, only one guess per question is permitted (just like the #oneguess tag).

For example, your question/answer might look like this:

```
How many times per day do you comb your hair?  
zero##0  
one to three##5  
*more than three##10
```

If the second answer is selected, then 5 points are awarded. You can use this tag to set up a multiple choice quiz with more than one “correct” answer.

Tags Supported by Quizzler Pro or Quizzler Maker Only

(Quizzler Pro & Quizzler Maker lets you create new quizzes with the following features. Once created, the free Quizzler can be used to view the quizzes and use the special features.)

##PICTURE:NUMBER

This tag is placed at the end of a question, and links that question to a picture that is stored in a separate database file. You give the name of the database file, and the record number. For example, if there was a picture file named "fruits", and an apple was the 3rd image in that file, you would phrase the question like this:

```
What type of fruit is this?##fruits:2  
an apple;a peach;a plum
```

(a "2" is used to indicate the 3rd picture, since counting begins with "0")

This is a new tag introduced with version 2.5. Currently, only Quizzler Pro can CREATE a quiz with pictures. Quizzler Maker will be updated in the near future. The free Quizzler can VIEW quizzes with pictures.

New with version 3.6, you can insert a JPEG image filename like this:

```
What type of fruit is this?##fruits.jpg  
an apple;a peach;a plum
```

Using the JPEG file format this way is probably the easiest way to make use of pictures. However, due to the way the PalmOS works, JPEG images (in native format, not within a .PDB file) may only be stored on a memory card. See the section “Working with Pictures” below.

#protect nnnn

nnnn is a number from 1000 to 32000. This is a code that must be entered before the quiz can be taken. If you also include the #limituse tag in a quiz, it must come AFTER the protect tag. In that case, you can take the quiz without entering a key code until the specified number of uses is used up, after that the key code must be entered. After entering the key code, the quiz is permanently unlocked for unlimited use (even if beamed to someone else).

#exam

This simple tag enables several features that are useful for educators when conducting a real "test", rather than just a study quiz. It is designed to simulate an actual exam environment and prohibit cheating. This tag does all of the following:

- No scoring feedback is given until the end after the score is "locked in" . After the last question the student will be warned that quitting the exam will lock in the score, and then the aggregate score will be displayed.
- Students can go back and change answers any time they wish; the exam is not "graded" until the end
- ALL hardware buttons are disabled, which prohibits a student from looking in another application for help (Palm only); obviously, there is no way to pause a quiz and resume it as you can normally.
- The mode is forced to "Auto", "Repeat wrong answers" is disabled, and "Speed Game" is disabled. There is no way to have the actual correct answer displayed.

Note that this is similar in some ways to the "Exam Mode" option that a user can choose before taking a quiz, but a quiz that is built with "#exam" can never function in any other way. This is a very powerful tool combined with "#limituse" and/or "#timer".

? (explanations)

Starting with Quizzler version 4, you can add explanations with every question. The user, when not in Exam mode, can click a button to get a detailed explanation of the correct answer. This is inserted using the long file format, preceded by a question mark, like this:

```
What is the closest planet to earth?  
Mercury  
*Venus  
Mars  
?Venus is closer, but covered with dense clouds
```

#scorecode x y

This tag provides a means of certifying the score. You can request that a user provide you with the "Score Code" to verify what score they achieved when taking the quiz. The Score Code can be obtained by selecting the appropriate menu item in the Quiz Options section of Quizzler.

When using this tag, set "x" to a multiplier value that will be multiplied by the actual score, and set "y" to an offset that will be added to the result. For example, if the actual score was 10 and you use this tag: "#scorecode 5 -20", then the Score Code generated for this score would be 10 X 5 -20, or 30.

#limituse x

This allows you to create a quiz that can only be taken a limited number of times before it is disabled. This can be used as a form of copy protection so you can distribute a demo

version, or as a way to prevent a student from taking a quiz repeatedly to get a better score. If you use this in conjunction with the “#nobackup” tag and beam your “fresh” quiz to a student, there will be no easy way to reload a new quiz to get more uses.

#nobeam

Quiz authors creating a commercial quiz might want to disable beaming as a form of copy protection. This tag will prevent the quiz from being beamed to another device.

#nobackup

This type of quiz will not be backed up on the desktop during a HotSync operation. This is another form of copy protection that you might desire.

#noscore

Use this tag to completely hide the score so that there is no indication at all of incorrect or correct answers. You could use this tag along with the “#scorecode” tag for a certification type quiz, or as a means to provide a demo version of a commercial quiz.

Questions and Answers

You can include up to 1000 questions in a quizzler file. Just insert each question on one line, followed by up to 10 answers on the next line. The total length of the questions and answers is limited to 8191 characters [Note: versions prior to 2.3 could only have 4 possible answers; versions prior to 2.7 had shorter limits on the question and answer sizes]

There is a new file format available that lets you put each answer on its own line. This can be more readable for large quizzes. See our web site for details on the “long file format”.

The first answer listed on each line is the correct answer. The order will be scrambled when viewed with Quizzler.

We recommend 3 or 4 possible answers in every quiz so that multiple choice becomes an option. Also, try to keep most answers less than 32 characters so they can be viewed more easily on the handheld screen.

Examples

Here is an example of a question with 3 possible answers, in the original short file format:

```
#quizzler
#name Planets
```

```
What planet is closest to the Sun?
mercury;venus;mars
```

Here is a quiz file that includes two chapters in long format, and some questions have more than one correct answer (worth 1 point):

```
#quizzler my demo
#name my demo
#author By John Covele
#longformat
```

#chapter The Planets

What planet is closest to the Sun?

*mercury
venus
mars

Which planet gets much hotter than the earth?

*mercury
venus##1
pluto

#chapter Science

What is boiling point of water?

*212 degrees
depends on altitude##1
200 degrees
150 degrees

Which weighs more: a ton of lead or a ton of feathers?

feathers
*they are the same
lead

Working With Pictures

Quizzler version 2.5 and later adds support for quizzes which contain pictures. If the "picture" button appears when viewing a question, there is a picture that will be displayed when you click the button. You tap anywhere on the picture to hide the picture and return to the question.



↑
show picture



tap anywhere to hide picture

Only devices with PalmOS 3.5 or later can display pictures. A quiz that contains pictures will consist of two or more files: the quiz database file, plus one or more picture database files. The quiz database file is linked to the picture database file(s), but you can still use a quiz

database file without the pictures.

You must own a copy of Quizzler Pro to create a quiz that contains pictures. Once created, any version of Quizzler (free or Pro) can be used to take the quiz.

How to add pictures to your Quizzler quiz

When writing/creating the actual quiz, a special tag is required at the end of the question for which you'd like to add a picture.

For example, here is a sample quiz question with a picture tag added:

```
According to the map, which direction is Metro?###QuizPictures:3000
north
*south
east
west
```

You'll notice on our example that directly after the question, a tag called "###QuizPictures:4" was added. By adding this tag, you are telling your quiz to look for the picture database named "QuizPictures" and display picture number 3000.

Now we need to create the other picture database file...

NEW: linking to JPEG images

New with version 3.6, you can link to a JPEG image in native file format (i.e. not contained within a .PDB file). As long as the target device has a memory card to store the image, this is by far the easiest method to include pictures and **you can read no further past this section!**

Here is an example of linking to a JPEG image file (notice there is no number after the filename; files may only contain one image):

```
What type of fruit is this?###fruits.jpg
an apple
a peach
*a plum
```

Due to the way the PalmOS works, JPEG images (in native format, not within a .PDB file) may only be stored on a memory card, so that is where Quizzler will look to find the picture. Specifically, you need to place JPEG images inside this directory on the external storage card: /DCIM. If you use the Palm Install tool to place the image file on the card, that is where it will be placed automatically. Perhaps a future version of Quizzler will support JPEG files in main memory; check our web site for the latest info.

The JPEG file must be stored in native format (ending with .JPG or .JPEG) and fit within the Palm screen. Larger files can be loaded but will be clipped to fit the screen.

Creating the Picture Resource Database

There are two general techniques you can use to create the picture database file:

option 1 - Create a resource database. This method is more simple and supports more types of pictures. You need Quizzler version 3.23 or later. Instructions are below.

option 2 - Create a non-resource database . This is the original method required when pictures were first introduced with Quizzler version 2.5. This is slightly more complicated, requires third party software, and pictures are more limited. Instructions are given on this other page for this technique .

There are a variety of third party tools that will convert pictures from common desktop formats (like GIF, BMP, or JPEG) into a Palm bitmap format that can be read by Quizzler. You can install these tools on your desktop computer, or even do the conversion online which works with any platform. We will mention some of these third party tools here and tell you how to use them.

When you create a resource database, you will add pictures to the file and give each picture a number, or "ID". This is the number you use to refer to a particular image, like the "3000" in the example above. You must begin numbering your pictures with resource ID's of 1000 and higher.

Quizzler will display your picture in a window that is 160 x 160 pixels, so your images should be sized appropriately. Some third party tools will do the scaling for you if your image is too large. Your images can be in full color or black and white, but keep in mind that not all devices can display color and color images take up more space.

Third Party Image Creation Tools

There is a third party utility called "OpenLogoHack" that allows you to display images on your Palm device at certain times. Conveniently, the same tools provided to create Open Logo Hack image databases will work with Quizzler, too. Note: you don't need to install OpenlogoHack, you will just use one of the tools for it.

Online image converter - This tool lets you upload images to a web site, and the image database is created and downloaded to your desktop. Pretty simple! Here are instructions for using this online tool:

- 1) Go to this web page: olh.sourceforge.net/convert/index.html
- 2) Enter the number of images you want in your image database, then press the "Start" button.
- 3) For "Output", choose "Open Logo Hack Database"
- 4) Select the appropriate "Screen size", and enter anything you want for "DB Comment".
- 5) For each image, or "Slot", you need to select a file and enter some information. The "Display Name" field is not used by Quizzler, so just make something up.
- 6) Press the "Convert Images" button, and a file called "logo.pdb" containing your images will be downloaded to your computer. All the pictures you convert using this tool will begin numbering at 3000. For example, the third picture will be number 3002.
- 7) Follow instructions below to set the picture database name to something more appropriate.

Setting The Picture Database Name

You will need to set the picture database name to something unique for your own use. **Keep in mind that the filename that you see on your desktop is not necessarily the same as the image database name as it appears on your Palm device**. The Palm name is stored internally. For example, when you use the OpenLogoHack tool described above, the filename is called "logo.pdb" but when you install this on a Palm device, the name is "OIHaLogos".

There is another third party tool called "**Filez**" that will allow you to examine the details of any file, and change its name. You can download this tool from PalmGear.com or Handango.com and run it on your Palm device. (There are many other similar tools available which run on either your desktop or handheld.) Make sure the real Palm name matched the name that you have in your quiz file, or Quizzler won't be able to display the picture.

Version History

New in version 4.0:

- Add explanations to each answer
- Norandom works much better now
- New internal file format
- Compatible with Quizzler Maker 4 and Quizzler 4 for desktops
- Quiz List is sorted, and you may enter a letter to scroll

New in version 3.6:

You may link to native JPEG pictures stored on a memory card

New in version 3.5:

- Now you can store quizzes on a memory card
- Find feature for Pro users
- Tap on Score button for additional details during a quiz

New in version 3.4:

Export score files for analysis in Gradebook

New in version 3.0:

- #exam tag
- Exam mode user option
- #newline tag
- Put quizzes into categories
- Save recent scores
- Beam scores to others
- New demo mode supported for commercial quizzes

New in version 2.7:

- Max length of question/answers raised to 8K!
- Fixed bug related to protected quizzes

Fixed bug related to scoring when using chapters

New in version 2.6:

#timer no longer requires Pro version

#useallanswers tag added

#protect tag added

New Preferences: lock buttons, and warn before finishing quiz

New in version 2.5:

Resume last quiz where you left off

Add pictures to quizzes

Questions may only be answered once for credit

Score indicates whether you left multiple choice mode (with asterisk)

Menu changes, modal About screen

Upgrade to Pro version by entering Key code in Register screen

New in version 2.3:

May now have up to 10 multiple choice answers

Cosmetic changes in menus, etc.

New in version 2.2:

Long questions/answers scroll

LargeBoldFont used instead of LargeFont

Fixed crashing bug if you tried to run without quizzes installed on some systems

New in version 2.1:

User interface enhancements

New in version 2.0:

New file format with lots of optional quiz features

Choose display font

Choose sound to play for correct/incorrect answers

Import from Doc files (Pro)

"Auto" question mode

PalmOS 3.0 required

"Previous" button added

New in version 1.2:

Added "categories" popup in Import

Fixed bug where private & recently deleted records don't show up in Import

Fixed misc bugs during Import

Put max questions limit back to 500

Longer answers possible (up to 128 chars)

Up/down buttons work in quiz list, memo list

Down button goes to "next question"

Percentage next to last score
Added "replace" option when importing quiz with same name

New in version 1.1:

You may append memos to the end of existing quizzes to surpass 4000 char limit.
More feedback after right and wrong answers in multiple choice format.
Fixed bug where some memos not listed during Import.
Memos don't need to have a comment line to be imported.
Give warning if quiz only supports flash card and multiple choice is selected.
Option to repeat wrong answers

Credits and Contact Info

Quizzler was created in 2000 and is copyrighted by John Covele, President of Pocket Mobility, Inc. Our web site features the latest version and news about Quizzler, as well as other handheld software products.

Pocket Mobility, Inc.
2735-B Iris Ave
Boulder, CO 80304
(303) 546-6200

<http://www.PocketMobility.com>