

**MOTION
APPS**

mSafe v4.1.2

For the Palm Treo™ 600, Treo™ 650, Treo™ 700p, Treo™ 680, Treo™ 755p and Centro

MotionApps
77 Dow Place, Suite 103
San Francisco, CA 94107, USA

www.MotionApps.com

mSafe v4.1.2 User Manual

Disclaimer

Information in this document is subject to change without notice and does not represent a commitment on the part of MotionApps. The software and the solutions described in this document are furnished under a license agreement. It is against the law to copy or reverse engineer the software or solutions except as specifically allowed in the license agreement. No part of this manual may be reproduced or transmitted in any form or by any means, electronic or mechanical, including photocopying and recording, for any purpose without the written permission of MotionApps.

This software, all manuals as well as all solutions are copyright ©2007 MotionApps. All rights reserved. Printed in the United States of America.

Companies, names, and data used in examples herein are fictitious unless otherwise noted.

MotionApps and mSafe are trademarks of MotionApps.

All other product names are trademarks or registered trademarks of their respective holders, used only to the owner's benefit, without the intent to infringe.

IMPORTANT - Read the full license terms and conditions below before installing. This License provides you with limited rights to use the software, conditioned upon your continued compliance with these terms and conditions. INSTALLATION OF THIS SOFTWARE WILL CONSTITUTE YOUR ACCEPTANCE OF THESE TERMS AND CONDITIONS.

END-USER LICENSE

Under single End-User License, you may use this program only on a single communicator, together with the related computer(s) used by you in conjunction with that communicator.

You may not use the program for any unlawful purpose, including infringement of the copyrights or other proprietary rights of others, or in any illegal manner or for creation or distribution of illegal content. You agree to indemnify MotionApps for any and all claims arising from any violation by you of the terms of this End-User License.

The following warranty and liability disclaimer apply to this product.

THIS PROGRAM IS PROVIDED "AS IS" WITHOUT WARRANTY OF ANY KIND, EITHER EXPRESS OR IMPLIED, INCLUDING BUT NOT LIMITED TO ANY IMPLIED WARRANTY OF MERCHANTABILITY, NON-INFRINGEMENT OR FITNESS FOR A PARTICULAR PURPOSE, ALL OF WHICH MOTIONAPPS SPECIFICALLY DISCLAIMS, TO THE MAXIMUM EXTENT PERMITTED BY LAW. THE ENTIRE RISK AS TO THE RESULTS AND PERFORMANCE OF THE PROGRAM IS ASSUMED BY YOU. SHOULD THE PROGRAM PROVE DEFECTIVE, YOU (AND NOT MOTIONAPPS OR ITS DISTRIBUTORS OR DEALERS) ASSUME THE ENTIRE COST OF ALL NECESSARY SERVICING, REPAIR OR CORRECTION.

NEITHER MOTIONAPPS NOR ANYONE ELSE WHO HAS BEEN INVOLVED IN THE CREATION, PRODUCTION, OR DELIVERY OF THIS PROGRAM SHALL BE LIABLE FOR ANY DIRECT, INDIRECT, CONSEQUENTIAL OR INCIDENTAL DAMAGES, LOST PROFITS, BUSINESS INTERRUPTION OR LOSS OF INFORMATION ARISING OUT OF THE USE, THE RESULTS OF USE, OR INABILITY TO USE SUCH PROGRAM, OR DAMAGE OF LOSS CAUSED BY THE PROGRAM, EVEN IF ADVISED OF THE POSSIBILITY OF SUCH DAMAGES OR CLAIM. SOME STATES DO NOT ALLOW THE EXCLUSION OR LIMITATION OF LIABILITY FOR CONSEQUENTIAL OR INCIDENTAL DAMAGES SO THE ABOVE LIMITATION MAY NOT APPLY TO YOU.

TO THE MAXIMUM EXTENT PERMITTED BY LAW, MOTIONAPPS' ENTIRE LIABILITY AND YOUR EXCLUSIVE REMEDY IN THE EVENT OF A BREACH OF MOTIONAPPS' OBLIGATIONS IS LIMITED TO A REFUND OF ANY LICENSE FEE YOU ACTUALLY PAID TO MOTIONAPPS FOR THIS PROGRAM.

Table of Contents

Table of Contents	3
Introduction.....	4
Welcome.....	4
How to Reach Us	4
Palm OS Basics	4
Installation.....	5
The mSafe Package.....	5
Installing Your Software	5
About the Demo Version	5
License activation	5
Using mSafe	6
Overview.....	6
Using mSafe.....	6
Configuring mSafe	6
SMS Settings	7
Frequently Asked Questions.....	8
Troubleshooting	9
Contacting Technical Support	9
Revision History	10
mSafe 4.1.2.....	10
mSafe 4.1.1	10
mSafe 4.1.....	10
mSafe 4.0.....	10
mSafe 3.9.1.....	10
mSafe 3.9.....	10
mSafe 3.8.....	10
mSafe 3.7.....	10
mSafe 3.6.....	10
mSafe 3.5.....	10
mSafe 3.0.....	10
mSafe 2.0.....	10
mSafe 1.0.....	11

Introduction

Welcome

mSafe enables you to lock your Treo device in certain situations:

- When it receives a special SMS message
- When wireless mode is disabled (i.e. the phone is turned off or the SIM card is removed)
- When the device is reset
- When the SD card is removed

Its main purpose is in situations when your device is lost or stolen and you want to make sure that nobody can see confidential data stored on your device.

Thank you for choosing mSafe!

How to Reach Us

Customer satisfaction is our top priority, so if you have any questions, comments, suggestions, or requests, we would be happy to hear from you. Here's how to reach us:

Web: <http://www.MotionApps.com/support>

Mail: MotionApps
77 Dow Place, Suite 103
San Francisco, CA 94107, USA

Palm OS Basics

This manual assumes the user has knowledge of fundamental Palm OS concepts. If you are unsure how to run an application, or other related concepts, please consult the user's guide that came with your communicator.

Installation

The mSafe Package

The package should contain the following in a zip file:

- mSafe Palm OS “.prc” file
- This Guide in PDF format

Requirements:

- A Treo 600, Treo 650, Treo 700p, Treo 680, Treo 755p, Palm Centro Communicator from Palm

Installing Your Software

To install an application transfer the .prc file to your device through a regular HotSync or by sending it to Palm device over Bluetooth or IR connection.

If you are unsure how to install an application on your communicator, please consult the manual that came with it.

Before installing mSafe on your device, make sure that you have deleted any previous versions of mSafe you may have.

Please ensure that the application resides in the main memory of the device and not on the SD card.

About the Demo Version

The demo version of mSafe is fully functional during the 7 day trial period. After the trial period expires, mSafe will disable its features and remain in that state until you activate it.

License activation

When you purchase mSafe, the activation code will be sent to you via e-mail. **Please make sure that you have used the correct e-mail address during the purchase process.**

In order to activate mSafe; start the application, select "Activate" option from the main menu and follow on-screen instructions.

Using mSafe

Overview

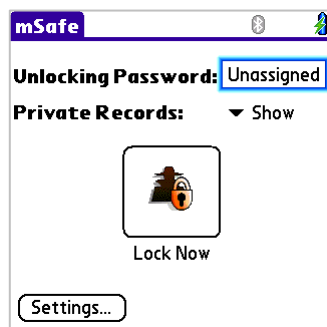
mSafe enables you to turn off and lock your Treo in certain situations:

- When it receives special SMS messages
- When wireless mode is off (i.e. phone is turned off or SIM card is removed)
- When the device is reset
- When SD Card is removed from the slot

mSafe can also completely erase the content of your device and/or SD Card when it receives the special “wipe” SMS message.

Its main purpose is in situations when your device is lost or stolen and you want to make sure that nobody can see confidential data stored on your device.

Using mSafe

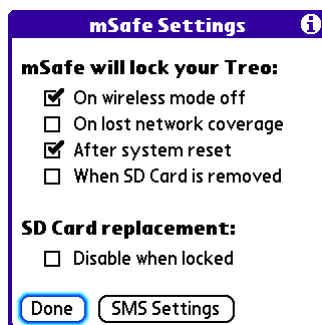


The main mSafe screen enables you to assign the unlocking password, configure how the private records will be displayed in the applications, lock the device and access the mSafe settings form.

Password and Private Records options inherit their values from the main Security application of your Treo.

With the “Lock Now” button you can manually lock your device.

Configuring mSafe



The mSafe configuration form is displayed when you tap the “Settings...” button on the main form, or when you select the Settings option from the main menu. If you have defined the password the system will ask you to enter it before accessing the settings form.

Using this form you can configure under which circumstances mSafe will lock your Treo.

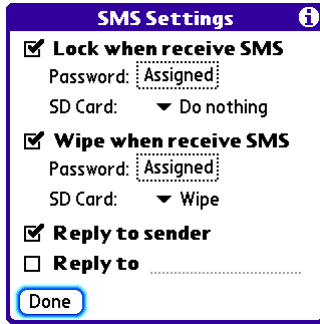
If you check the option titled “Disable when locked” under the “SD Card replacement” section, mSafe will disable the replacement of the SD Card when the device is locked. The SD Card that was active at the moment when the Treo is locked will remain active, but as soon as it is removed the system will not accept a new card until the device is unlocked.

This option is useful if you have, for example, some kind of backup application that periodically makes the backups of your information on the SD Card. With option checked, your backup software will remain functional even when the device is locked, but it will be impossible for the intruder to run some other application that could steal your data by running it from some other SD Card (Note: PalmOS will automatically launch the application named “Start.prc” on any SD Card as soon as the SD Card is inserted. The intruder may use this feature to insert the SD Card with

a malicious application and steal your data even when the device is locked. This scenario becomes impossible with this option checked.)

You can also disable the currently active SD Card at the moment of locking, by selecting the “Unmount” option at the “SMS Settings” form described below.

SMS Settings



You can configure mSafe to take some actions when it receives the SMS message containing a special text. The SMS message text should contain at least the following line:

mSafe lock <Password>

There are two passwords you can define in mSafe: locking password and wipe password. When mSafe receives the SMS with the locking password, and “Lock when receive SMS” option is checked, it will instantly lock your Treo and make it unusable before entering the main system unlock password.

Also, when mSafe detects an incoming SMS message with the wipe password, it will completely erase the content of your device, and lock it with a randomly selected password, making the device recoverable only by a hard reset and securely protecting your information.

For both locking and wipe actions you can give instructions to mSafe regarding what to do with the SD Card. It can leave it as it is (“Do nothing” option), unmount it - simulating the SD card removal from the system (“Unmount” option), or completely erase the content of the card (“Wipe” option).

Once mSafe detects the lock or wipe SMS message, it can inform you about the status of taken action by sending a response SMS message back to the sender of the locking or wipe request (“Reply to sender” option) or to a predefined phone number. To make mSafe respond to a predefined number, check the “Reply to” option and enter the full phone number to which you want to send the reply SMS message in the edit field next to this option.

You should never configure the same passwords for wipe and lock requests. If you do so, mSafe will always give precedence to wipe requests.

For example, if you define the locking password to be “**secure**” and the wipe password to be “**destruct**”, you can:

- Lock your Treo by sending an SMS message containing the text “**mSafe lock secure**” to it
- Completely erase the content of your device by sending an SMS message containing the text “**mSafe lock destruct**” to it

NOTE: SMS messages are not case sensitive; you can mix lower case and upper case letters.

Frequently Asked Questions

1. What does mSafe do?

mSafe locks or deletes your Treo when it receives a special SMS message or when your phone is powered off (wireless mode is off).

Also, for additional security, mSafe can be configured to lock your device after it is reset, when the SD Card is removed, or manually.

2. Why do I need this feature?

Let's presume you discover that your device is missing! You have no idea where you lost it or who might have stolen it from you; however, you are deeply concerned since your whole life is stored on that device: your personal info, your friends and their addresses, your credit card info, your personal and business email, and who knows what else.

Now, wouldn't it be nice if you could send one SMS message to your own phone that would lock the device and prevent others from accessing your confidential information and racking up wireless charges?

3. Will mSafe work on my Treo?

mSafe v4 supports Treo 600, Treo 650, Treo 680, Treo 700p and Treo 755p devices only.

4. What if someone performs a soft reset?

Your device will still be locked after a soft reset.

5. What if someone performs a hard reset?

All your data will be erased after a hard reset – so your data is safe.

6. What if someone removes my SIM card?

Wireless mode on your phone will be disabled, and mSafe will lock and turn off your device (if you enable this feature in the Settings form).

Troubleshooting

mSafe normally does not require troubleshooting.

However, if you are experiencing problems please check the mSafe FAQ list or contact MotionApps technical support.

Contacting Technical Support

If you need to report a problem or request assistance when using this version of mSafe, please fill in the Support Request form on our Web site:

<http://www.motionapps.com/support>

To help us help you, please, be sure to include as much information, and as detailed description of your problem as possible.

Revision History

mSafe 4.1.2

- Maintenance release

mSafe 4.1.1

- Support for Palm Centro

mSafe 4.1

- Preventing Global Find exploit when device is locked
- mSafe Portal

mSafe 4.0

- Support for Treo 700p and Treo 680

mSafe 3.9.1

- Improved SMS handling

mSafe 3.9

- Improved SD card handling

mSafe 3.8

- Maintenance release

mSafe 3.7

- Upgraded registration procedure
- Improved SD card handling

mSafe 3.6

- Added support for Treo 650
- Fixed issue with blocking/resetting some Treo devices when an SMS is received

mSafe 3.5

- Treo will no longer reset when locking SMS is received. Now it will be locked without reset
- Added option to lock on network coverage lost
- mSafe will remount the SD card if it is in the slot when the device is unlocked
- Fixed issue with sending response SMS messages
- Numerous simple bug fixes

mSafe 3.0

- Added support for deleting the content of the device via SMS
- Added support for SD Card handling
- Added option for sending response SMS messages

mSafe 2.0

- Added support for Treo 600
- Added option for locking the device after the system reset

- UI redesign

mSafe 1.0

- Initial release - Locks and turns off the device when it receives a special SMS message or when wireless mode is disabled