



# Minuet Browser 3.1

## (PDA Edition)

# User Guide

\$Revision: 1.5 \$

\$Date: 2006/11/03 20:34:53 \$



TriPrince Technology Co.

## Table of Contents

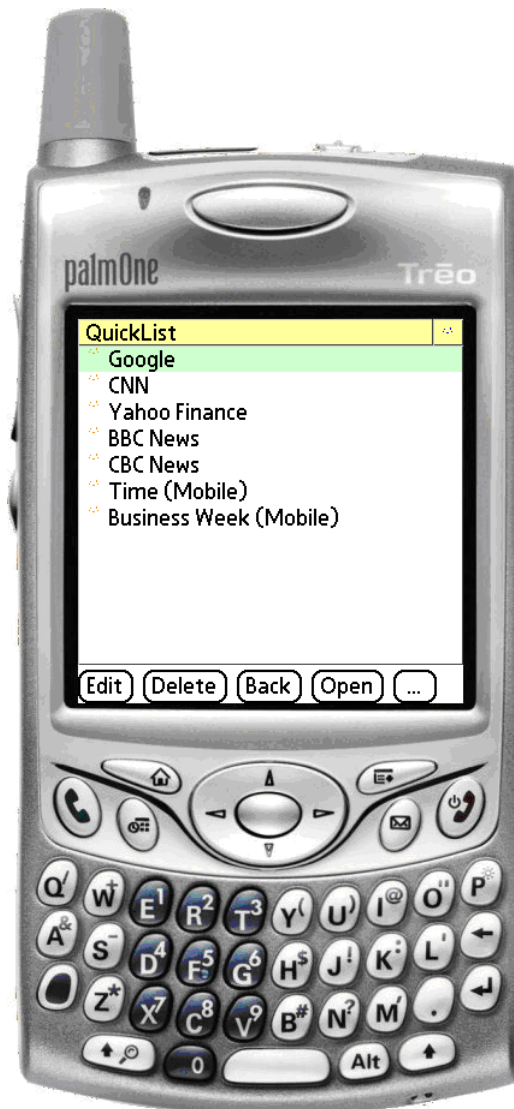
Introduction.....	5
Main Features.....	6
Minimum Requirements .....	6
Quick Tips.....	7
PDA and PDA [no files] Editions .....	7
Locked and Unlocked Versions .....	7
Using Minuet .....	8
Installing Minuet.....	8
Direct OTA .....	8
IBM Java VM .....	9
Palm OS .....	10
Windows Mobile Devices.....	11
Running for the First Time .....	12
Accessing Sites .....	13
QuickList.....	13
Bookmarks .....	14
Open Screen .....	15
View Controls .....	16
Viewing Large Images.....	16
Viewing Click-Sensitive Images.....	17
Auto-Hide Title/Status Bars.....	18
Entering Text .....	18
Using List Boxes.....	20
Search Text .....	20
Save Contents to Files (for Devices with File Support) .....	21
Save Current Web Page .....	21
Save Images .....	22
Download Files from Internet.....	23
Open Local Files (for Devices with File Support).....	24
Color Schemes and Font Sizes.....	26

Secured Web Access.....	26
Shortcuts .....	28
Tabs.....	30
Preferences.....	31
Language Set-up .....	31
Input Set-up.....	32
General.....	32
Status.....	33
Shortcuts .....	34
Advanced .....	34
About.....	35
Activate (Locked Version Only).....	36
Appendix A – Minuet Advantages .....	37
End-to-End Solution .....	37
Full HTML Support .....	37
Tab Browsing.....	38
Java Security .....	38
Built for Speed .....	38
Appendix B – Default Web Sites.....	39
QuickList.....	39
Business .....	39
Entertainment.....	39
Info .....	39
News .....	40
Search.....	40
Shopping .....	40
Sports .....	40
Appendix C – Known Issues.....	42
Problems with full screen mode.....	42
Memory Leak in IBM JVM .....	42
Appendix D - Troubleshooting .....	43

OTA does not work.....	43
Internet Access.....	43
Cannot Connect to Some Sites.....	43
Minuet Keeps Asking Me when Downloading Images .....	43
Cannot Enter Text.....	43
Web Pages look Different.....	43
Got “Bad Request”or Other Server Errors.....	44
Out of Memory .....	44
Minuet “Freezes” for a Long Time .....	44
Appendix E – Known APN Settings.....	46

## Introduction

Minuet Browser (PDA Edition) is a full-featured, stand-alone HTML browser designed specifically for connected PDA devices. It requires no “middle-man” or “hidden” servers. All your inputs and security protection are handled right on your handheld device, safely and efficiently. There are no subscriptions, bottle-necks, and security holes to worry about. With Minuet, you can customize your own web browsing experience, from personalized font sizes and color schemes, to various download options tailored for your networking needs.



**Welcome to Minuet!**

## **Main Features**

- **[New in V3.1] Pen input – full support for pen-based devices.**
- **[New in V3.1] Auto-fill – memorize and fill in username and password for you.**
- **[New in V3.1] Search Text – find and jump to specific words in a page.**
- **[New in V3.1] GZIP Compression – reduce data traffic by up to 90%.**
- **[New in V3.1] Save Content to Files – save the current page, an image, or download a file to you local device. *This feature requires support for local file system.***
- Tabbed Browsing – move between viewed pages without reloading.
- Advanced Image Viewing – ideal for viewing large images on a smaller screen.
- Programmable Shortcuts – quick 1-key access to all the main screen, page up/down and top/bottom.
- Full support for HTTP/HTTPS and HTML 4.0 - input forms (username, password, cookies) and frames.
- Multi-language support – read web pages in all languages, and controls in English, Chinese (Traditional) and Chinese (Simplified.) *This feature requires devices that support those languages.*
- Bookmark Lists – create and manage your own lists of bookmarks.
- Other Convenient Features - reading bar, download byte counter, dynamic memory management, custom user agent string, color schemes, font sizes.

(Minuet does not support JavaScript, Macromedia Flash and video/audio streaming.)

## **Minimum Requirements**

Before you install and run Minuet, please make sure your phone meets all of the follow requirements:

- Java ME Support (MIDP 2.0 and CLDC 1.0.)
- 2 MB SDRAM (4 MB SDRAM recommended.)
- Full Internet access available. *Through wireless network, WiFi or BlueTooth.*
- Support for local file system. *This is required to save contents to file and is optional.*
- IBM WebSphere Everywhere Micro Edition 5.7.1 or later. *Only required for devices that have no built-in support for Java ME. (e.g. Palm Treo.)*

If you are not sure whether your device meets all of the above requirements, we strongly encourage you to try Minuet before you buy.

## Quick Tips



### Press-and-Hold:

- When entering text, try press-and-hold a key to cycle through to other characters, upper/lower cases, numbers and symbols.
- When viewing a page, try press-and-hold the RETURN key or touch-and-hold on the images to enlarge/shrink them and save contents to local files.

## PDA and PDA [no files] Editions

The Minuet Browser can detect whether support for local file system is present and allow access accordingly. However, some devices may not allow Minuet Browser to run at all. Therefore, a second executable PDAnf (no files) is provided for those devices. This executable will not check for or allow any access to file systems.

## Locked and Unlocked Versions

Minuet is a shareware. You are welcome to try it for 10 days, absolutely free. After that, you will need to purchase an activation code<sup>1</sup> to unlock it. The Locked version has all the features of the Unlocked version except for the following:

- All the bookmarks will be cleared when the Locked version exits and the QuickList will be reset to the 3 default sites.
- The recently opened list of URLs will be cleared when the Locked version exits. (The Unlocked version will save the recently opened URL list.)
- The Locked version will expire after 10 days and will display a ticker tap reminder.

---

<sup>1</sup> Activation codes can be purchased from <http://www.triprince.com>. We also offer bulk discounts. Please contact [info@triprince.com](mailto:info@triprince.com) for more information.

## Using Minuet

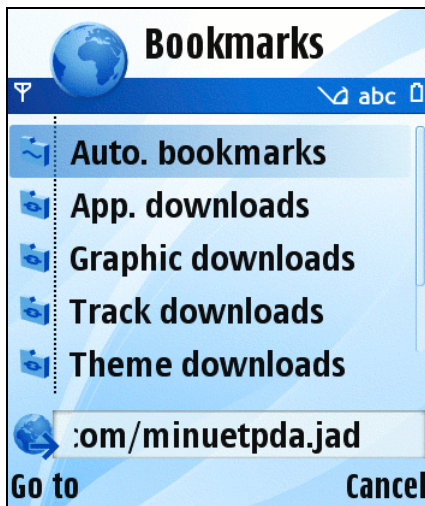
Please read through this user guide before installing and running Minuet, and come back to it if you encounter problems.

### *Installing Minuet*

There are a number of different ways to install Minuet, depending on your device. Here we will discuss several common methods. If these methods are not applicable to your device, please check with your device provider on ways to install Java ME applications.

### **Direct OTA**

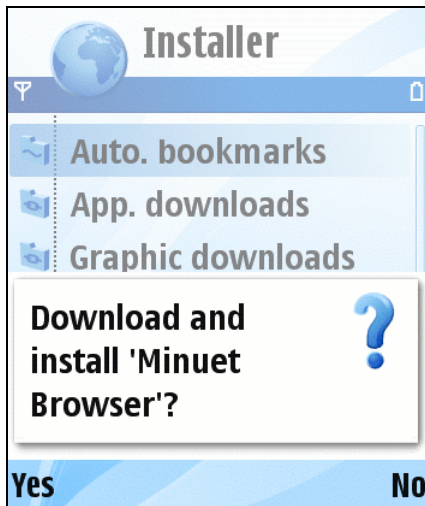
For devices that come with built-in support for Java ME applications, the easiest way is to download and install Minuet by OTA (over the air).



Just open your default WAP browser and open the URL <http://www.triprince.com/minuetsda.jad> (or <http://www.triprince.com/minuetsdanf.jad> for devices without local file systems.)

**Open URL for Direct OTA**



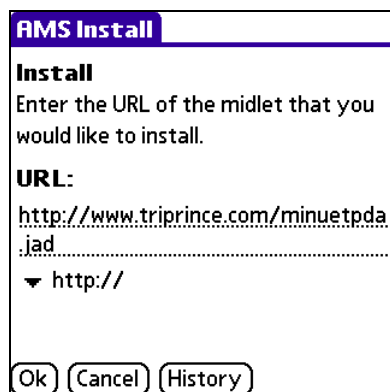


Follow the instructions to download and install Minuet.

### Install Minuet by Direct OTA

## IBM Java VM

For devices without built-in Java ME support, you can obtain<sup>2</sup> a JVM (Java Virtual Machine) for your device. Information about the IBM JVM can be found in <http://www-306.ibm.com/software/wireless/weme/>. The IBM JVM supports Palm Tungsten and Treo, HP iPaq, Dell Axim, iMate, Dopod, and Sharp Zaurus, etc. There may be other JVMs available for your device. Please check with the JVM provider on how to install the JVM and Java applications.



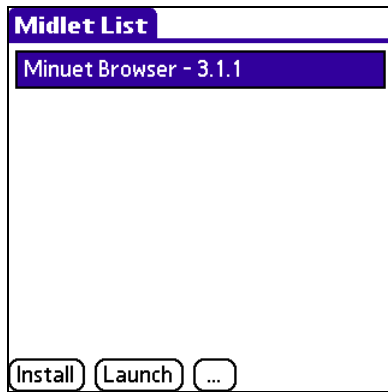
Start up the IBM JVM and select Install. Then enter the URL

<http://www.triprince.com/minuetpda.jad> (or <http://www.triprince.com/minuetpdanf.jad> for devices that have no file system.)

### Install Minuet with IBM JVM

---

<sup>2</sup> The IBM JVM is free for Palm Tungsten and Treo devices, and there are free trial versions for many other PDA devices.

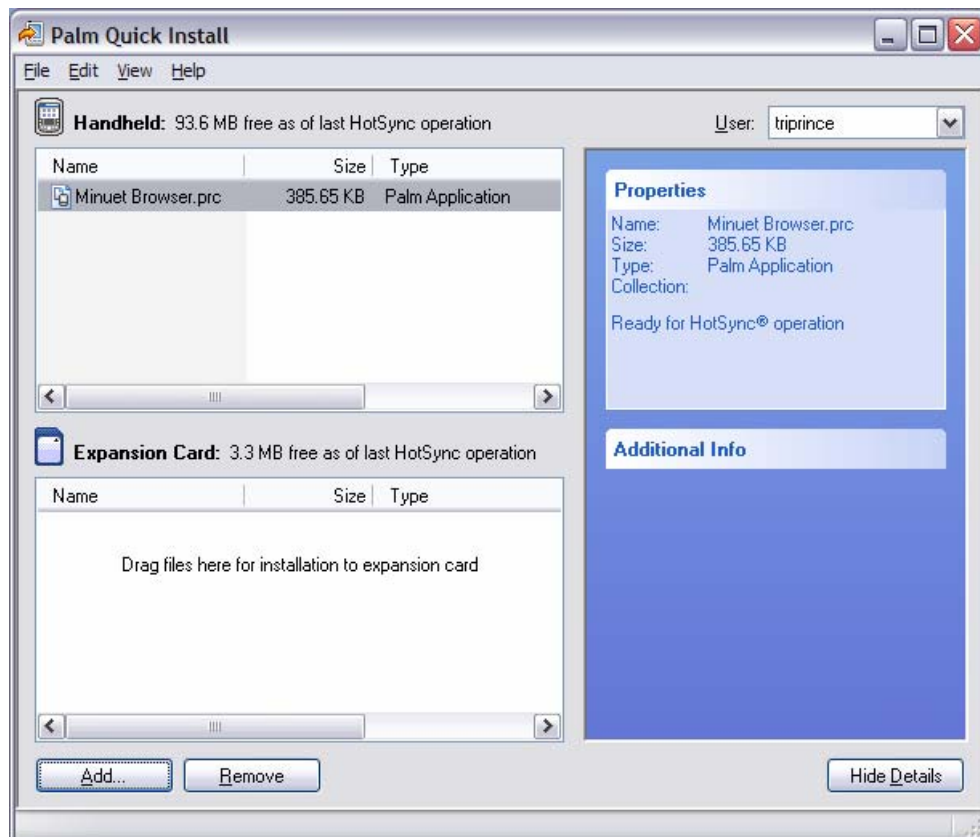


After Minuet is downloaded and installed, you can launch Minuet from within the IBM JVM.

### Running Minuet with IBM JVM

## Palm OS

Palm Tungsten and Treo devices running Palm OS come with desktop software to install application software. This is usually facilitated by desktop software and a sync cable (or wireless connection.)



### Install Minuet on Palm



### Minuet as a Palm Application

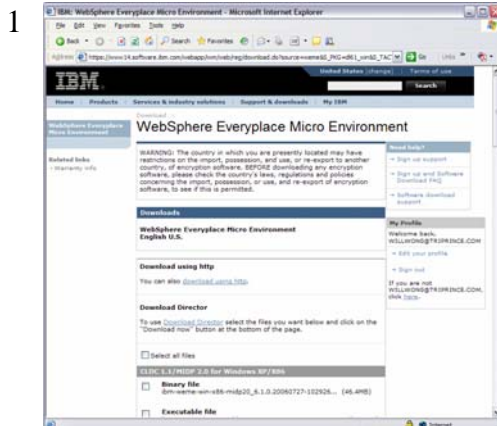
To run the Minuet Browser, the IBM JVM will still need to be installed. However, the Minuet Browser can be installed as a Palm application and launched outside of the JVM.



Please make sure the fileconnect.prc and j9secpol.prc files are installed along with the IBM JVM. The fileconnect.prc file comes with the IBM JVM. It is required to support access to the local file system. The j9secpol.prc file is included with the Minuet Browser installation package. If this file is not installed, the device will ask for your permission to access the network continuously.

## Windows Mobile Devices

Devices running the Windows Mobile OS will need to install a JVM (Java Virtual Machine.) We recommend the J9 JVM from IBM, also called WebSphere Environment Micro Edition. Follow these instructions to install the JVM and Minuet:



1 Download ibm-weme-wm50-sp-arm-midp20-6.1.0-20060321-073117-918.exe from this site:

[https://www14.software.ibm.com/webapp/iwm/web/reg/download.do?pkgid=&S\\_SRCID=weme&source=weme&S\\_TACT=104CBW71&S\\_CMP=&S\\_PKG=dl61\\_win&s=&ltype=input&l=E\\_nGLISH+U.S.&mtype=input&m=download&id=2006-04-06+13%3A40%3A42.143397R&fam=&cat=&cp=UTF-8](https://www14.software.ibm.com/webapp/iwm/web/reg/download.do?pkgid=&S_SRCID=weme&source=weme&S_TACT=104CBW71&S_CMP=&S_PKG=dl61_win&s=&ltype=input&l=E_nGLISH+U.S.&mtype=input&m=download&id=2006-04-06+13%3A40%3A42.143397R&fam=&cat=&cp=UTF-8)

You have to register with IBM, but it's free.

### Command Menu



Run the .exe file on your desktop.

Once the file finishes, go into the directory the installer created and unzip:

- weme-wm50-sp-arm-midp20\_6.1.0.20060317-111429.zip

- 3 Inside the unzipped folders are subfolders named "bin," "lib," "doc," and "examples" Copy All but "doc" to the Windows Mobile device using Activesync.
- 4 Using the file explorer, Resco Explorer, etc., run "emulator," which is inside the "bin" folder. Run it from your Windows Mobile device.  
The program will install. Just keep hitting "yes."
- 5 Once it is installed, copy the MinuetPdaV31x.jad and MinuetPdaV31x.jar files to your Windows Mobile device.
- 6 Run "emulator." It gives you the option to install a Midlet. Choose to install MinuetPdaV31x.jad.

## Running for the First Time

When you start up Minuet the first time, you will be greeted with the language selection screen, the license screen and the input set-up screen. They will not show up again when next time you start Minuet, but you can still access them under the Preferences menu.

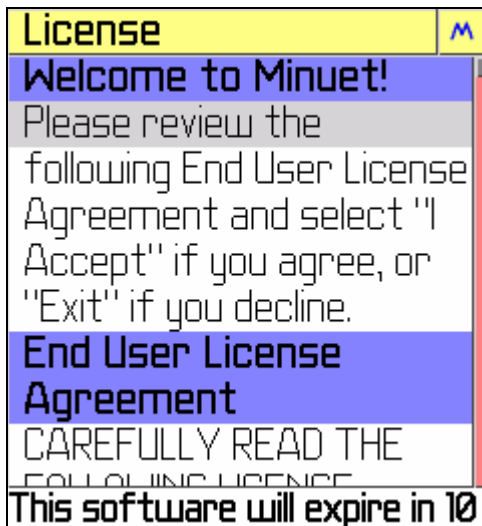


Select Language

The Auto (default) option uses the language setting of your device. It is the safe choice if you are not sure. It is also a good choice if you sometimes change the language setting of your device.

The other settings are English, Chinese (Tradition) and Chinese (Simplified.)

Next, you will be greeted by the end user license page.



Please read the license carefully, and select “I Accept” if you accept the license, or otherwise select “Cancel”.

#### Minuet End User License

After you accepted the end user license, you will be asked to select the proper keyboard type.



If you are using a device with a full (QWERTY-style) keyboard, select the “Full Qwerty” keyboard.

If your device has a numeric pad instead, select the “Numeric Pad” keyboard.

If you are not sure, select the Generic Java option. This option uses the built-in support for handling key inputs, which works for all the devices, but may not be as convenient to use as the platform-specific support provided by Minuet.

#### Select Keyboard Type

## Accessing Sites

### QuickList

You can begin surfing with one of the preloaded sites in the QuickList, as shown below.

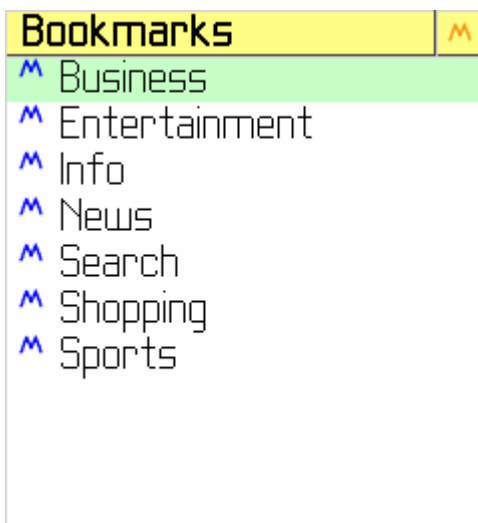


Select the site by moving the highlight bar with the cursor keys and then press the RETURN key, or tap it with the pen (if supported.)

**QuickList**

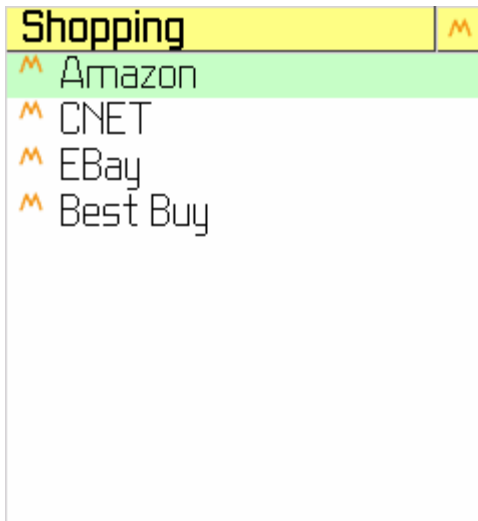
## Bookmarks

You can also bring up the Bookmark Lists and select one of the lists.



These bookmark lists can be created and deleted so you can store and organize your favorite sites into different lists.

**All the Bookmark Lists**

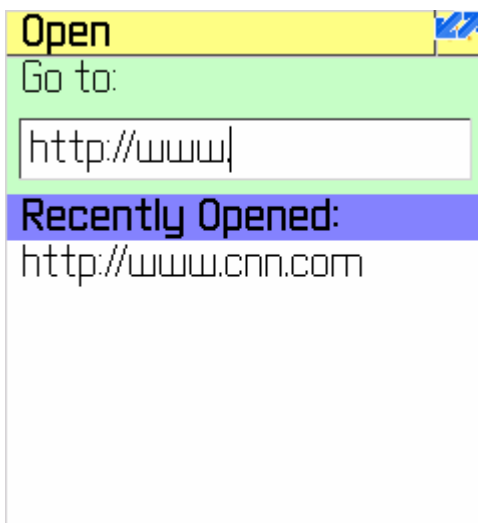


Go into a bookmark list and select a site to open.

**Bookmarks in a List**

## Open Screen

You may also enter the web address by bringing up the “Open” menu.



You can highlight the “Go to:” box to enter the web address. The recently accessed sites are also presented in this menu. You can move the highlight bar downward and hit RETURN to go to one of those addresses.

**Open a URL**



If you have problems opening a web site, you may need to configure your device's networking set-up. See section “Internet Access” for more details.

## View Controls

Menu and web viewing are controlled by the pen actions (if supported), cursor keys and the RETURN key.



**Viewing a Web Page**

Scroll up and down with the cursor keys. For pen-based devices, you can also drag the page up and down.

Scroll UP/DOWN to move the highlight bar and display window. Scroll LEFT/RIGHT to jump up/down a full page at a time. (On Palm devices, this is reversed. Use the LEFT/DOWN keys to scroll, and the UP/DOWN keys to do page jumps.)

To select a web item or a menu command, move the highlight bar to it and press the RETURN key, or tap it with the pen (if supported.)


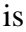
The highlight bar is colored when it is over a selectable item, such as a site in the QuickList or a web link in a web page. If the item is not selectable, the highlight bar becomes gray.

## Viewing Large Images

Minuet fits large image to the size of the screen.



**Large Image Fitted to Screen**

Viewing a larger-than-screen image is easy. You can move the highlight bar to the image and then scroll the image to the left or right. When highlighted, a large image is marked with a small  icon on the upper right corner. A fitted image is marked with a small  icon on upper right corner.





**Large Image at Original Size**

You can expand an image to its original size by moving the highlight bar to the image, and then pressing and holding the RETURN key (or pen down) for 1 second. Likewise, you can shrink a large image back to the screen size by holding down the RETURN key (or pen down) again.

## Viewing Click-Sensitive Images

Minuet supports “click-sensitive” image maps where users of PC web browsers can click on various regions of an image to go to different destination web pages.



**Click-Sensitive Image**

For pen-based devices, you can just tap the region on the image as you would with a mouse.

For non-pen devices, Minuet supports the same function by enclosing a selected region on the image with a dotted line. You can scroll left and right to move the selected region around and then press the RETURN key to simulate the “click” on the image.

## Auto-Hide Title/Status Bars



**Title/Status Bars Shown**



**Title/Status Bars Hidden**

By default, Minuet always displays the title bar (on the top) and the status bar (on the bottom). You can configure Minuet to automatically hide the title and status bars in the Preferences > General menu.

## Entering Text

Minuet supports text input using the Full “QWERTY” input mode, the Numeric Pad input mode, and the Generic Java input mode. Minuet senses the inputs differently depending on the input mode selected. You will be asked to select the input mode when you start up Minuet for the first time. You can also go to the Preference > Input Set-up screen to change your selection.

Pen input (if supported) is enabled for all 3 input modes.



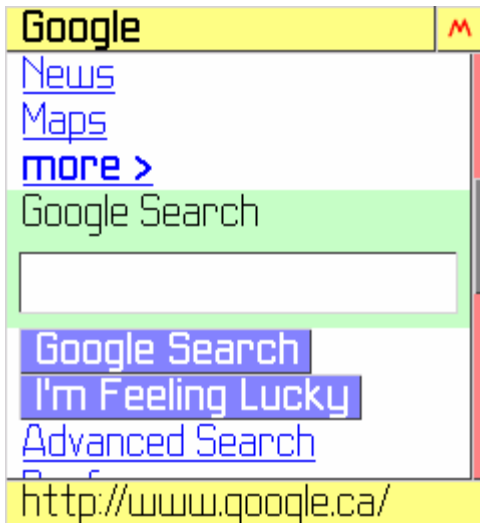
### Switching Input Modes:

If you find it difficult to enter text with a particular input mode, you may switch to another the input mode mid-way without leaving the page or losing the text that you have already entered.

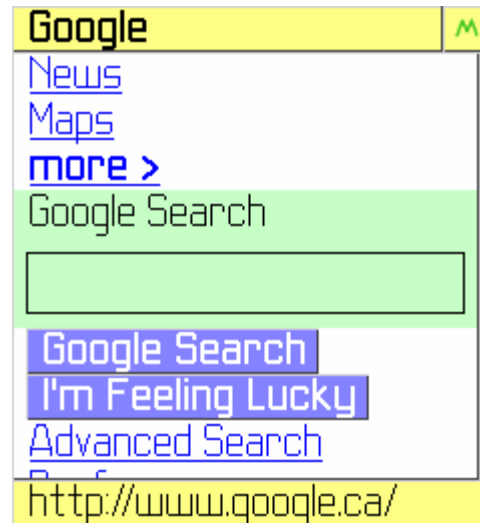


### Press-and-Hold:

When entering text in Full QWERTY or Numeric Pad mode, try press-and-hold a key to cycle through to other characters, upper/lower cases, numbers and symbols.



**Full QWERTY and  
Numeric Pad Input Modes**



**Generic Java Input Mode**

### Full QWERTY Input Mode

You should select the Full QWERTY mode if you have a device that has a full keyboard. When entering text in this mode, you can generally press and hold a key to cycle through all the input choices. For example, you can press and hold the 'a' key, and Minuet will cycle through 'a', 'A' and then '\*'.

### Numeric Pad Input Mode

You should select the "Numeric Pad" input mode if your device that has a typical phone key pad. When entering text in this mode, you can press and hold a key to cycle through all the input choices. For example, you can press and hold the '2' key, and Minuet will cycle through 'a', 'b', 'c', '2', 'A', 'B', 'C'. Press and hold the '0' key to cycle through the common URL symbols: (space), '.' (dot), '@' (at) and '/' (forward slash.) Press and hold the '\*' key to cycle through the rest of the symbols. Press the '#' key to delete a character.

### Generic Java Input Mode

If you select the General Java input mode, Minuet will use the default input method provided by your device. This method will work on any device, but may not be as convenient to use as the other input methods.

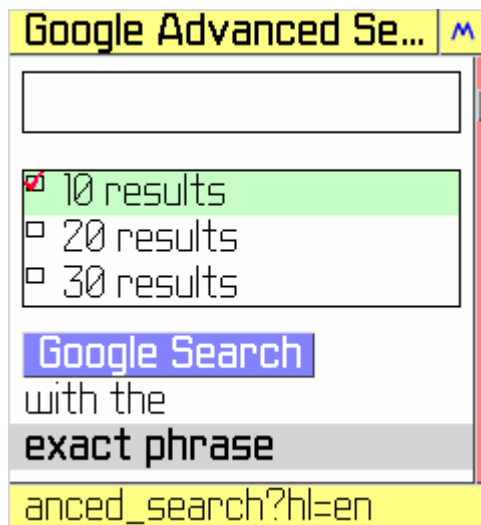


#### **With Generic Java mode:**

You will need to press the RETURN key first before entering text.

## Using List Boxes

A list box is an item on the web page that presents a list of choices.

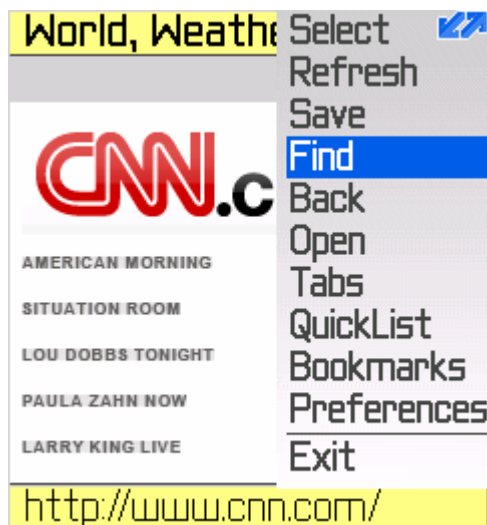


You can select and unselect one or more of these choices. To make your selections, you need to first highlight the list box, and then use the LEFT and RIGHT cursor controls to move the highlight bar within the list box.

**Web Page with List Box**

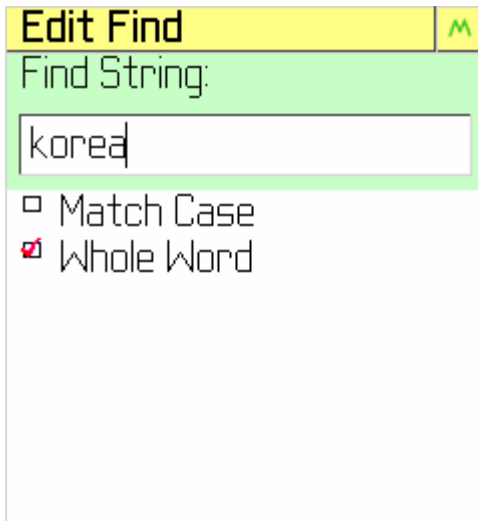
## Search Text

While viewing a web page, you can quick jump between occurrences of specific text patterns.



You can select and unselect one or more of these choices. To make your selections, you need to first highlight the list box, and then use the LEFT and RIGHT cursor controls to move the highlight bar within the list box.

**Enter the Find Mode**



Type in the text string for the search. You can specify whether the string search should be case-sensitive, and whether to do a whole-word search.

Select the OK command when done.



You are now in the Find mode. The matching words are lighted.

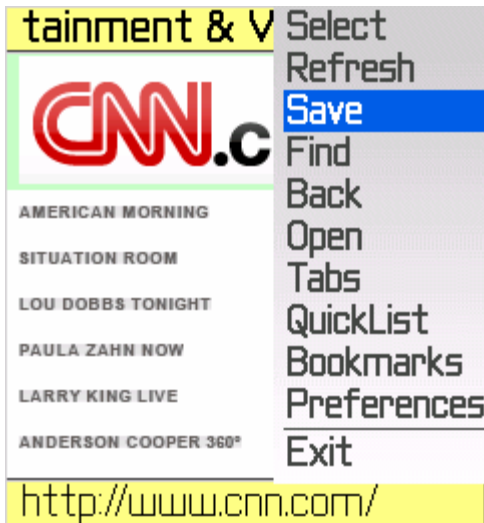
The page up and page down keys will now jump between the matching text strings.

## ***Save Contents to Files (for Devices with File Support)***

Minuet PDA Edition supports the saving of contents to local files. The contents can be web pages, images or files that are accessible with a web link.

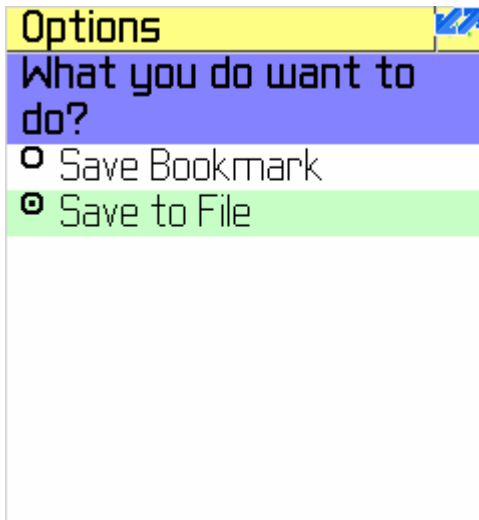
### **Save Current Web Page**

You can save the contents of the current page to local files.



Select the “Save” command from the command menu.

### Save Web Page to Files



Select “Save to File”. This will bring up the File menu. See below for more details about the File menu.

The other option would save the current page as a bookmark.

### Save Options

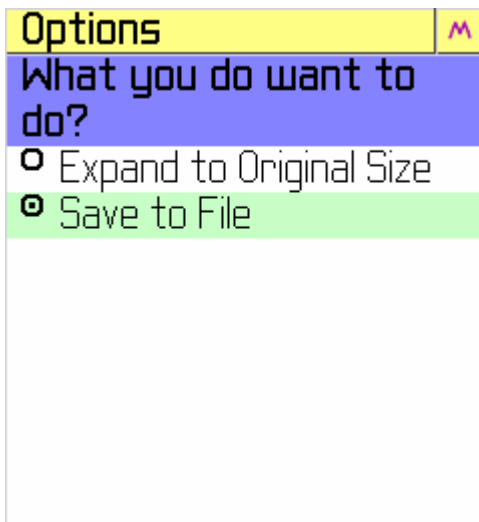
## Save Images

You can save an image to the local file storage.



**Save Web Page to Files**

Press and hold the RETURN key or pen down for 1 second on the image.



**Save Options**

Select “Save to File”. This will bring up the File menu. See below for more details about the File menu.

The other option would resize the image.

## Download Files from Internet

You can download a file from the Internet to the local file storage. The file must be referenced by a web link. The contents at the destination of the web link will be saved. The target content can be a web page, an image, an MP3 file and any other content.



Press and hold the RETURN key or pen down for 1 second on the web link.

### Download Internet Files



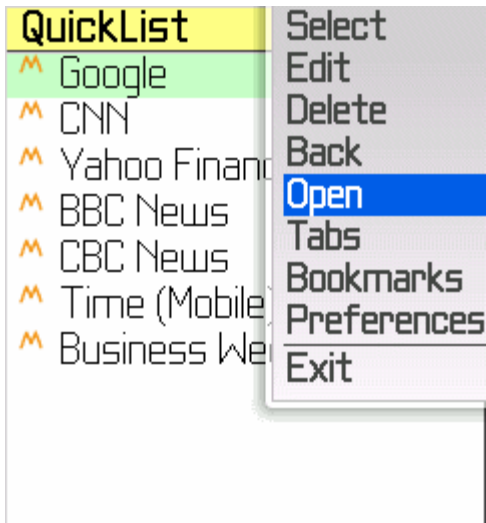
Navigate down the file tree and save to a file.

### Save Options

## Open Local Files (for Devices with File Support)

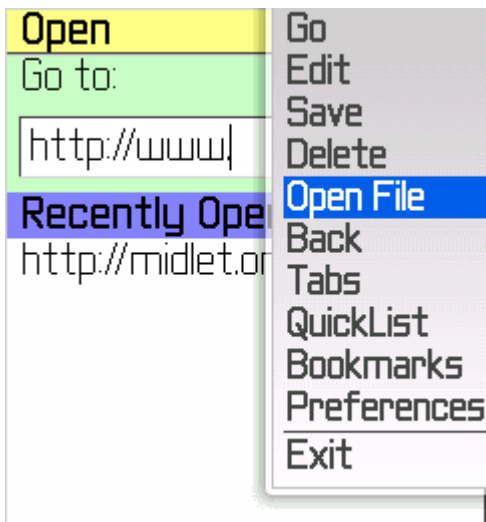
Minuet can open and read local files if the file extension is “.htm” or “.html” for web pages, and “.jpg”, “.gif” or “.png” for image files.





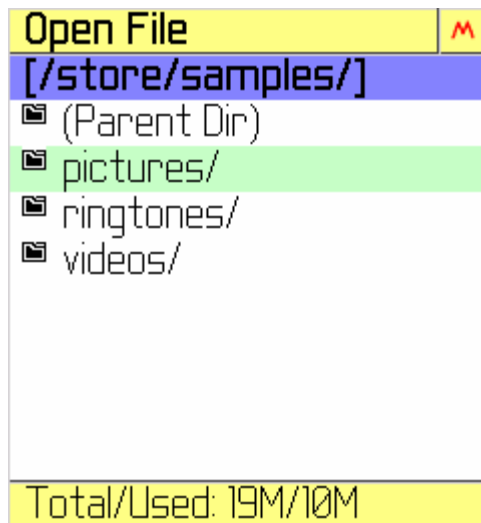
Select “Open” from the command menu.

**Select Open**



Select “Open File” from the command menu.

**Select Open File**



Select the file to open.

Select File

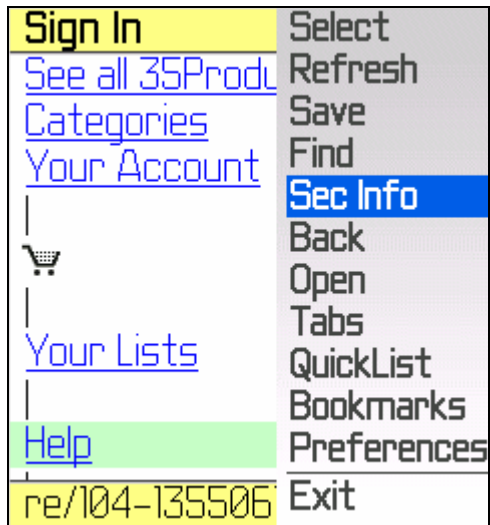
## ***Color Schemes and Font Sizes***

Minuet supports 6 color schemes and 3 font sizes for you to personalize your viewing experiences. See section “Preferences” for details.

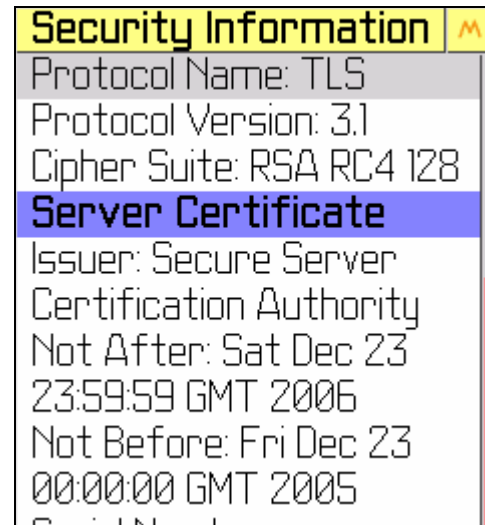
## ***Secured Web Access***

Minuet supports access to secured web sites the same way as you would with a PC browser. You may have to enter the web address beginning with the <https://> prefix, or some secure sites will automatic redirect an access to an <http://> address to an <https://> address for you.

You may choose to connect only if end-to-end security is possible, by setting the parameter in the Advanced Preferences menu. By default, Minuet will attempt end-to-end security on a best effort basis only. (Refer to the Advanced Preferences for the differences between the two options.)



**The Sec Info option is available when viewing a secured page**



**Sec Info Screen**

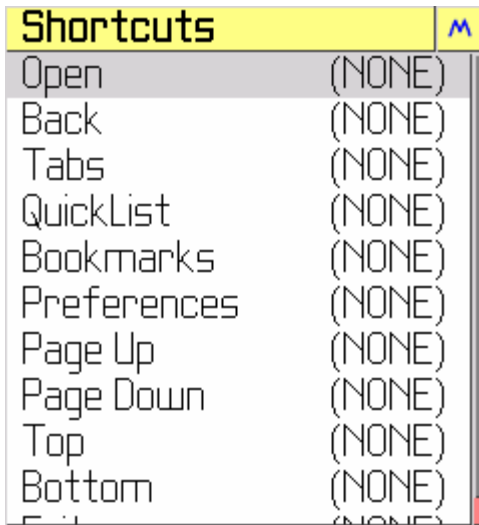
Minuet supports a number of HTTPS encryption methods, including the 128-bit encryption and other methods. However, the actual method employed will depend on the secured server, the network link and the device itself. When connected to a secured web page, you can review the security information by selecting the “Sec Info” command, as above.

## Shortcuts

You can issue a command or bring up a menu by simply pressing a shortcut key. Minuet supports these shortcuts, and you can program Minuet to assign these shortcuts to any keys. There are no default key assignments so you must assign them before using the shortcuts.

Name	Commands
Open	Bring up the Open screen.
Back	Go back to the last screen.
Tabs	Bring up the Tabs screen.
QuickList	Bring up the QuickList screen.
Bookmarks	Bring up the Bookmarks screen.
Preferences	Bring up the Preference menus.
Page Up	Go up by one page.
Page Down	Go down by one page.
Top	Go to the top of the page.
Bottom	Go to the bottom of the page.
Exit	Exit Minuet

### Shortcuts Keys



Shortcuts	
Open	(NONE)
Back	(NONE)
Tabs	(NONE)
QuickList	(NONE)
Bookmarks	(NONE)
Preferences	(NONE)
Page Up	(NONE)
Page Down	(NONE)
Top	(NONE)
Bottom	(NONE)
Exit	(NONE)

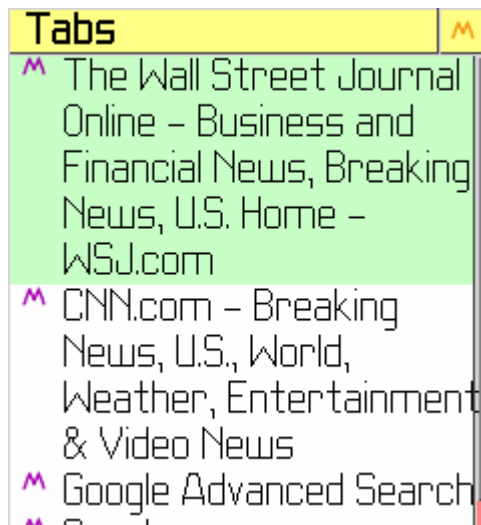
**Shortcuts Set-up**

The shortcut keys can be reviewed and re-programmed in the Preferences > Shortcuts menu. To program any of the shortcut keys, just highlight the key in this menu and hit ENTER. You can then hit any key on the keyboard that you wish to be used for that shortcut.

You may also reset all of them to the default assignment (None) with the RESET command.

## Tabs

The Tabs screen displays all the web pages that are currently in the tab list.



You can select to view any of the web pages in the list.

### Tab Browsing

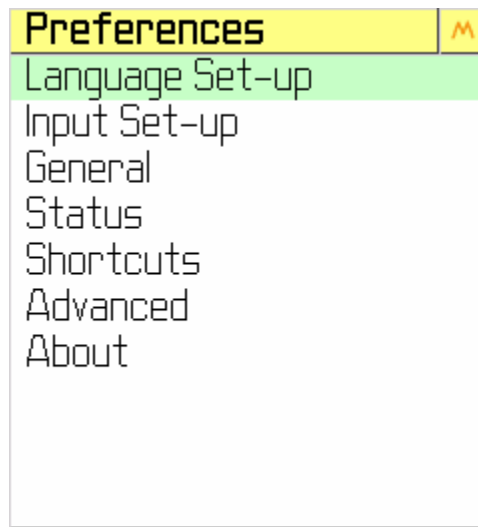


Note that when you move to a new web page with the Open menu, or by clicking a link or an image in a web page, the current web page is automatically stored in the tab list. However, if you move away from a web page by using the Back command, the current web page will NOT be stored up in the tab list.



Moreover, the least recently viewed web pages in the tab list will be freed up (deleted) first when your device runs out of memory.

## Preferences



### Preferences

Bring up the Preferences screen to change the control settings for Minuet.

### *Language Set-up*

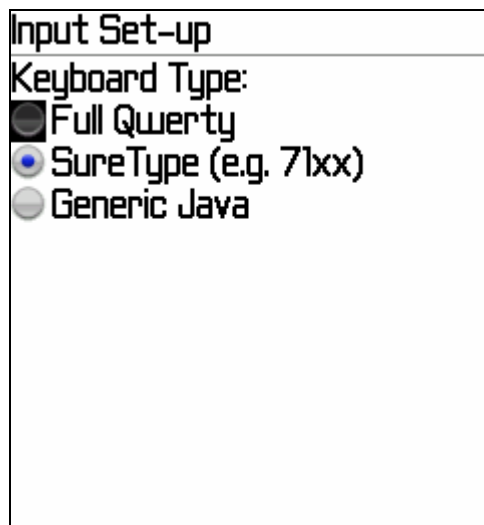


### Select Language

The Auto (default) option uses the language setting of your device. It is the safe choice if you are not sure. It is also a good choice if you sometimes change the language setting of your device.

The other settings are English, Chinese (Tradition) and Chinese (Simplified.)

## Input Set-up



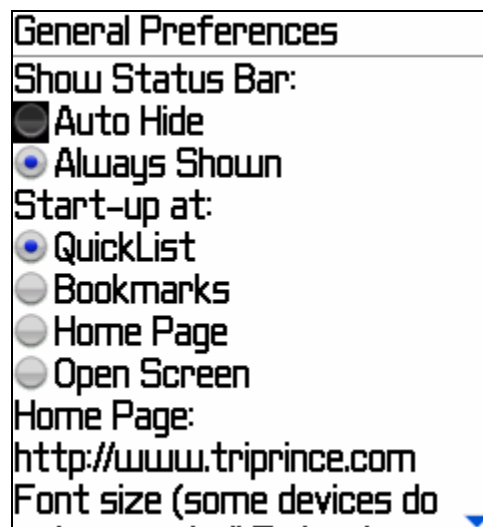
If you are using a device with a full (QWERTY-style) keyboard, select the “Full Qwerty” keyboard.

If your device has a numeric pad instead, select the “Numeric Pad” keyboard.

If you are not sure, select the Generic Java option. This option uses the built-in support for handling key inputs, which works for all the devices, but may not be as convenient to use as the platform-specific support provided by Minuet.

**Select Input Mode**

## General



**General Preferences**

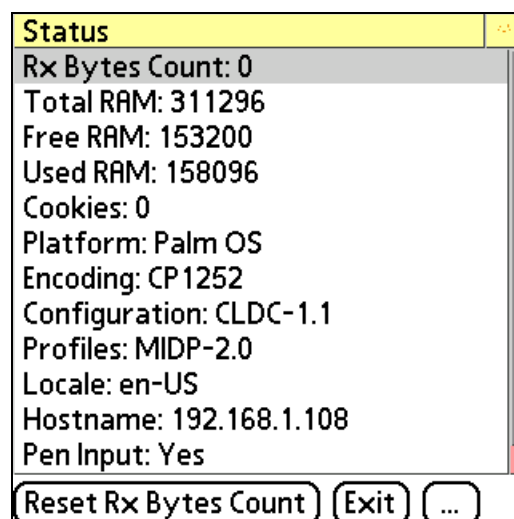
Go into the General preferences menu to make the following configuration changes:

- Set to automatically show and hide the title and status bars (default), or show them always.
- Set start-up option: QuickList, Bookmark Lists, a home page or the Open screen.
- Set home page URL.



- Configure the font size. Note that there are 3 sizes, but some devices do not support all the sizes.
- Configure the color scheme. The 6 choices are:
  - Default
  - Tropical Paradise
  - Box of Chocolate
  - Denim
  - Spice Rack
  - Gray Scale
- Enable/disable the use of and storage of cookies. Note that some devices have built-in support for cookies that are not controlled by Minuet. This and the next settings will not affect the cookie operations on those devices.
- Set the number of cookies to keep. When that number is exceeded, the cookies that are least recently used will be deleted first.
- Set the number of previously opened web addresses in the URL buffer.
- Set the number of auto-fill entries to keep. Each field (username, password, etc.) will count as one entry.
- Reset all bookmarks to the default set.
- Reset all the parameters to the default values.

## Status

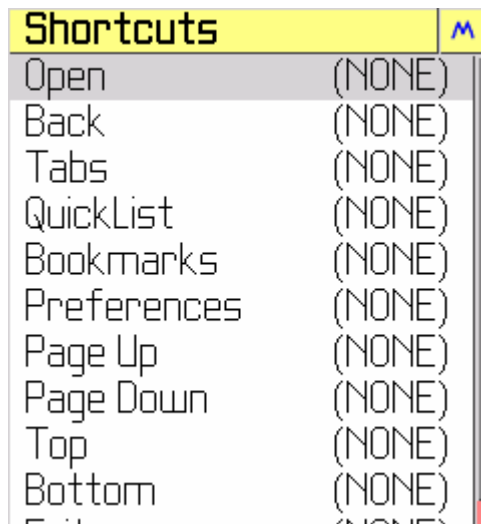


### Status

Go to the Status menu to view the current status of Minuet and your device.

- View and reset the download byte count.
- Total and free RAM.
- View the number of cookies in use and clear all cookies.
- Platform information.

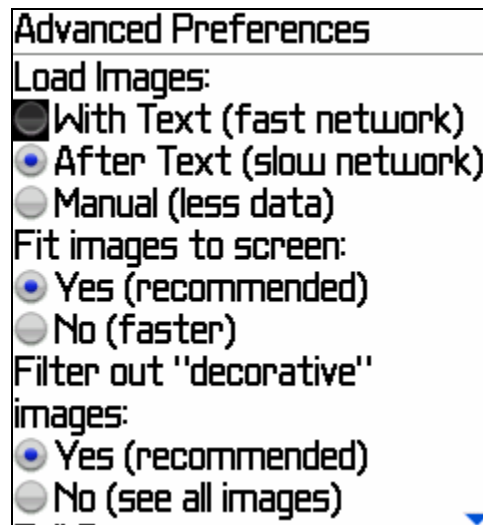
## Shortcuts



Go to the Shortcuts menu to view and change the shortcut keys. You can select the shortcut key and enter a new key for that shortcut. See Shortcuts for the use of the shortcut keys.

### Assign Shortcuts to Keys

## Advanced

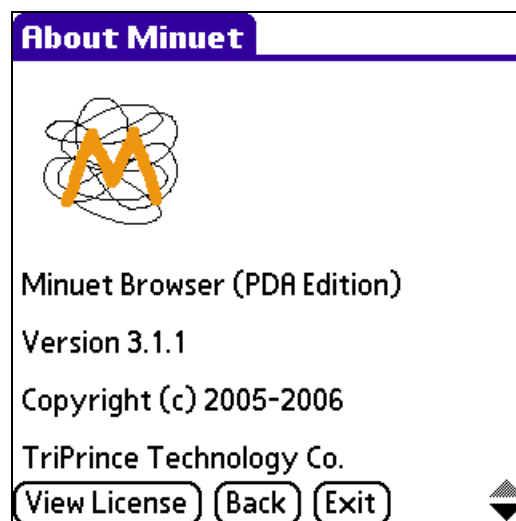


### Advanced Preferences

Go to the Preferences > Advanced menu to view and change the advanced Minuet settings:

- Download images along with text (default), download text first and then images, or download images only when the image placeholder is “clicked”.
- Fit big images to the screen dimensions.
- Filter out “decorative” images. These are usually images that decorates the web page and not very informative. If you find some images missing from a web page, you can try to disable this feature and reload the page.
- Allow / disallow full screen mode. Some devices have problems when running in full screen mode. Disabling the full screen mode may fix these problems. See section “Problems with full screen mode” for more details.
- Custom user agent string. You can enter a user agent string to make Minuet look like another browser (e.g. Internet Explorer, FireFox, etc.) to the web server.

## About



### About Minuet

Go to the Preferences > About screen to review the information about Minuet:

- Version
- Technical support contact information
- End user license

***Activate (Locked Version Only)***

Go to the Preferences > Activate menu to unlock Minuet. You will need to purchase an activation key from <http://www.triprince.com>. This menu will disappear once Minuet is unlocked.

## **Appendix A – Minuet Advantages**

### ***End-to-End Solution***

Minuet is a stand-alone browser. So what does that mean? You may be surprised to know that almost all the web browser solutions for mobile phones involve a so-called “middle-man” server. When you open a web page with these browsers, your web address is sent to a “middle-man” server, which then opens the web page on your behalf. The “middle-man” server then renders (draws) the web page and sends the final picture to your device.

While this off-loads some of the work to the “middle-man” server, the bottleneck is now at this server. Everybody using this browser is getting slowed down, even though they are all trying to get to different web sites. If this server ever goes down, nobody can use their browsers.

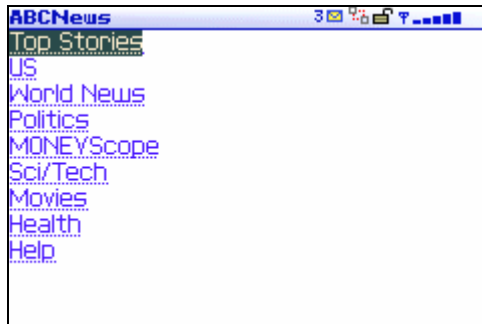
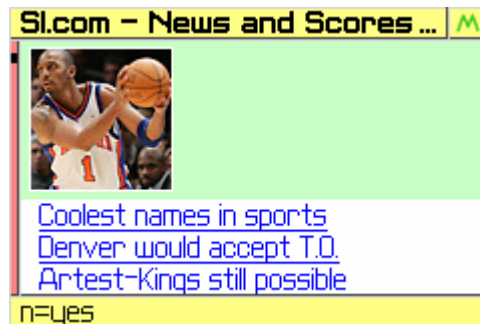
If that is not bad enough, consider this. Everything you enter into a web page, such as your user name, password, account numbers, is first transferred to this server, often without any security protection, before they are sent to the intended web site. That is why these browsers usually do not explicitly state that they rely on “middle-man” servers. Some may say so in fine print, others simply hide this fact.

Minuet, on the other hand, is a fully stand-alone browser, just like your PC browser (e.g. Microsoft Internet Explorer.) There are no “middle-man” servers, and when Minuet is connected to a secured site, your data is fully protected before it leaves your device.

Another advantage of Minuet’s stand-alone solution is that you now have full control over how the web pages look on your device. You can change the look to your taste by changing the font size, color scheme, zooming in and out on images. You can also start reading the web page as soon as the data arrives, and even stop or jump off to a web link before the entire page is loaded, just like your PC browser. You can even load only the text, and then pick and load only those images you want to see.

### ***Full HTML Support***

Most browsers for mobile devices today are WAP browsers. WAP is a stripped-down version of web standard. These so-called WAP pages are simple pages designed to be viewed by mobile devices with small screens. The pages usually have very few or no images, and contain much less information than the web pages from the same site.

**WAP Page****Full HTML Page**

Minuet is designed to support full HTML web pages. It can view the same web pages as you would with your PC browsers. Minuet is a testament of our belief that web surfing experience should not be compromised just because you are doing it with a smaller screen. In fact, it should be enhanced because now you can access your favorite web sites anywhere and anytime.

### ***Tab Browsing***

Minuet is the only mobile web browser that lets you view one web page while downloading another. No more constant waiting for web page to reload when you switch between pages.

### ***Java Security***

Minuet offers secured HTTPS end-to-end web access based on the Java platform. You can rest assured that your data and activities are fully protected. Now you can access your secured accounts the same way as with a PC, and you can do it anywhere and any time.

### ***Built for Speed***

Minuet runs only on mobile devices. It is designed from ground up to be compact and fast. This is not true for most handheld browsers, which are really PC browsers that got shoe-horned into small mobile phones. They are therefore big and slow, and cannot deliver the performance needed for small devices.

## **Appendix B – Default Web Sites**

### ***QuickList***

"Google" - "http://www.google.com"

"CNN" - "http://www.cnn.com"

"Yahoo Finance" - "http://finance.yahoo.com"

"BBC News" - "http://news.bbc.co.uk/text\_only.stm"

"CBC News" - "http://www.cbc.ca"

"Time (Mobile)" - "http://mobile.time.com"

"Business Week (Mobile)" - "http://businessweek.mobi"

### ***Business***

"Yahoo Finance" - "http://finance.yahoo.com"

"CNN Money" - "http://money.cnn.com"

"MSN MoneyCentral" - "http://moneycentral.msn.com"

"Fortune" - "http://www.fortune.com/fortune"

"Wall Street Journal" - "http://online.wsj.com"

"Business Week" - "http://www.businessweek.com"

### ***Entertainment***

"E!online" - "http://www.eonline.com"

"Yahoo TV" - "http://tv.yahoo.com"

"TV Guide" - "http://www.tvguide.com"

"Movies.com" - "http://movies.go.com"

"Billboard" - "http://www.billboard.com"

"MTV" - "http://www.mtv.com"

"The Hollywood Reporter" - "http://www.hollywoodreporter.com"

### ***Info***

"Treo Central (Mobile)" - "http://treo.treocentral.com/" (for Palm only.)

"Intellicast Weather" - "http://www.intellicast.com"

"Traffic.com" - "http://www.traffic.com"

"Restaurants.com" - "http://www.restaurants.com"

"Dictionary.com" - "<http://www.dictionary.com>"

## **News**

"CNN" - "<http://www.cnn.com>"

"AOL News" - "<http://news.channel.aol.com>"

"USA Today" - "<http://www.usatoday.com>"

"Google News" - "<http://news.google.com>"

"NY Times" - "<http://nytimes.com>"

"ABC News" - "<http://www.abcnews.com>"

"Washington Post" - "<http://www.washingtonpost.com>"

"Fox News" - "<http://www.foxnews.com>"

"Yahoo News" - "<http://news.yahoo.com>"

"CSPAN" - "<http://www.c-span.org>"

"BBC News" - "[http://news.bbc.co.uk/text\\_only.stm](http://news.bbc.co.uk/text_only.stm)"

"CBC News" - "<http://www.cbc.ca>"

"Time" - "<http://www.time.com>"

## **Search**

"Google" - "<http://www.google.com>"

"Yahoo" - "<http://www.yahoo.com>"

"Go" - "<http://www.go.com>"

"Web Crawler" - "<http://www.webcrawler.com>"

"Hot Bot" - "<http://www.hotbot.com>"

## **Shopping**

"Amazon" - "<http://www.amazon.com>"

"CNET" - "<http://www.cnet.com>"

"EBay" - "<http://www.ebay.com>"

"Best Buy" - "<http://www.bestbuy.com>"

## **Sports**

"ESPN" - "<http://espn.go.com>"

"Sports Illustrated" - "<http://sportsillustrated.cnn.com>"



"NFL" - "http://www.nfl.com"

"The Sports Network" - "http://www.sportsnetwork.com"

"Sports Central" - "http://www.sports-central.org"

"Rivals.com" - "http://www.rivals.com"

"Our Sports Central" - "http://www.oursportscentral.com"

## Appendix C – Known Issues

### ***Problems with full screen mode***

By default, Minuet uses the entire screen area to display web pages. However, some phone models does not handle full screen mode properly. For example, the Nokia 6600 ignores all command inputs in full screen mode, making it impossible to get out of a web page screen. Other devices have problems reporting the screen size correctly in when full screen mode, resulting in funny layout of screen objects.

If you are having similar problems on your phone, you should disable full screen mode in the Preferences > Advanced menu. For Nokia, the title area will remain visible when viewing web pages, resulting in a slightly small display area.

### ***Memory Leak in IBM JVM***

There is a known memory leak problem with the IBM WebSphere Everywhere Micro Edition JVM version 5.7.1. This is the currently available version for all Palm Tungsten and Treo devices. Extended running of any Java application will exhaust the dynamic RAM, and the application may hang or crash. If that happens, you may need to restart Minuet, the IBM JVM, or reboot the device.

This problem appears to be solved in the newer 5.7.2 and 6.0 (beta) versions, but they are not yet available for the Palm platforms.

## **Appendix D - Troubleshooting**

### ***OTA does not work***

Some service providers intentionally disable the OTA service. In that case what you will see is a page of information about Minuet but no “Download” button. If that is the case, please check with your service provider for possible ways around the problem.

### ***Internet Access***

Minuet requires access to the Internet via an IP gateway. If your phone supports HTTP over WAP, then Minuet can access the Internet via a WAP gateway as well. Please check with your equipment and service provider for details regarding access to the Internet.

### ***Cannot Connect to Some Sites***

There are few cases when our users can connect to some sites but not others, because their service providers choose to block out access to those sites. The reasons behind that are often marketing and not technical in nature. If you encounter such problems, please contact your service provider. You are entitled to access the entire Internet if you have paid for Internet access, but you need to assert your rights.

### ***Minuet Keeps Asking Me when Downloading Images***

Many phones are pre-configured to ask the user for permission to use the network for each and every access. The number of confirmations can become excessive when viewing web pages with a lot of images, because each image requires a separate network access. You can usually cut down the number of confirmations by setting the phone to ask only once with the first access. Check your phone manual for the proper procedures.

For Palm devices, make sure you installed the j9secpol.prc file that comes with the IBM JVM package.

### ***Cannot Enter Text***

If your current input mode is Generic Java, make sure you select the input field and then press the CENTER key to bring up the text input screen.

### ***Web Pages look Different***

Most web pages are designed to be displayed on big PC screens, while Minuet runs on devices with a very small screen. So you will find that some web pages look different because Minuet has to rearrange the page to fit all the web items on the small screen. Minuet also filters out unnecessary text and graphics to enhance the download speed and the display.

Another possible reason for the different looks is that many web pages contain some JavaScript, which is not supported by Minuet. While most of these web pages can still be displayed correctly by Minuet, occasionally you may find some web pages that rely heavily on JavaScript, to a point where a lot of items are missing from the page. We do not recommend viewing these web pages with Minuet.

### ***Got “Bad Request” or Other Server Errors***

Some web servers respond differently to different web browsers by reading the User Agent in the client request. However, some do not respond nicely to browsers that they have no knowledge of (e.g. Minuet.) In that case, you may get a Bad Request response from the server.

One way to get around that problem is to make Minuet look like a well-known browser to the server. Some common user agent strings are:

#### **IE 6.0 on XP:**

Mozilla/4.0 (compatible; MSIE 6.0; Windows NT 5.1)

#### **Firefox on Windows XP:**

Mozilla/5.0 (Windows; U; Windows NT 5.1; en-US; rv:1.8) Gecko/20060319  
Firefox/2.0a1

#### **Konquerer running on Linux:**

Mozilla/5.0 (compatible; Konqueror/3.1; Linux 2.4.22; X11; i686; en\_US, en)

### ***Out of Memory***

Each web page consists of up to a few hundred kilobytes (Kbytes) of text and images. Depending on the amount of free RAM available on the device, Minuet may run out of memory after extended viewing and caching of many web pages.

If Minuet runs out of free memory, it will attempt to delete the oldest of the previously viewed web pages and repeat the attempt to load the page again. If the attempt fails again, Minuet will display an alert. At that point, you should close down Minuet and then try again. You can also check the amount of free memory available on the device in the Preferences > Status menu.

### ***Minuet “Freezes” for a Long Time***

Some image loading and resizing operations can put a very heavy load on the CPU, during which Minuet may become unresponsive. This would be avoided on most platforms because Minuet has a multi-threading design that provides quick response to user inputs, even while engaged in intensive processing. However, some JVMs (including the IBM JVM for PalmOS) do not handle multi-threading well enough to overcome the long freezes.

If this happens, you should wait at least 1 minuet before attempting to reset Minuet or reboot the device.

## Appendix E – Known APN Settings

Minuet contains built-in help information for setting up the APNs for popular North American server providers. The following are some known APN settings for service providers outside of North America. Please note that these settings do change over time and without notice. So please check with your service provider for the correct settings.

Country	Mobile operator	Access point name / User Name / Password
Argentina	Personal	gprs.personal.com
Argentina	Unifon	internet.gprs.unifon.com.ar
Australia	Telstra	telstra.internet
Australia	Optus	internet
Australia	Three	3netaccess
Australia	Vodafone	internet
Austria	Max Online	gprsinternet
Austria	One	wap.one.at
Belgium	Orange	orangeinternet
Belgium	Mobistar	web.pro.be
Belgium	Proximus	internet.proximus.be
Bermuda	AT&T	proxy
Bermuda	Mobility	net.bm
Brazil	Claro	claro.com.br
Brazil	Oi	gprs.oi.com.br
Brazil	TIM	tim.br
Bulgaria	Mobitel (Mtel)	inet-gprs.mtel.bg
Canada	Fido	internet.fido.ca

Country	Mobile operator	Access point name / User Name / Password
Canada	Rogers AT&T	internet.com / wapuser1 / wap
Chile	Entel PCS	imovil.entelpcs.cl bam.entelpcs.cl
Chile	Telefonica GSM	web.tmovil.cl
China	China Mobile	cmnet
Croatia	VIPNET	gprs.vipnet.hr
Czech Republic	Eurotel	internet
Czech Republic	Oskar	internet
Czech Republic	Oskar prepaid cards	ointernet
Czech Republic	T-Mobile	internet.t-mobile.cz
Denmark	TDCmobil	internet
Denmark	Orange	web.orange.dk
Egypt	Vodafone	internet.vodafone.net
Dominican Republic	Orange Dominicana	orangenet.com.do
Finland	Telia Mobile	internet
Finland	DNA	internet
Finland	Sonera	internet
Finland	Radiolinja	internet
Finland	Saunalahti	saunalahti

Country	Mobile operator	Access point name / User Name / Password
France	Orange	orange.fr
France	SFR	websfr
France	Bouygues Telecom	eBouygTel.com
Germany	D2 Vodafone	web.vodafone.de
Germany	E-Plus	internet.eplus.de
Germany	O2	internet
Germany	Quam	quam.de
Germany	T-Mobile D1	internet.t-d1.de
Greece	Vodafone	internet.vodafone.gr
Greece	Telestet	gint.b-online.gr
Greece	Cosmote	internet
Hungary	Vodafone (Prepaid "Optimized")	vitamax.internet.vodafone.net
Hungary	Vodafone (Prepaid "Standard")	vitamax.snet.vodafone.net
Hungary	Vodafone (Postpaid "Optimized")	internet.vodafone.net
Hungary	Vodafone (Postpaid "Standard")	standardnet.vodafone.net
Hong Kong	CSL	internet
Hong Kong	Orange	web.orangehk.com
Hong Kong	New World	internet
Hong Kong	People	internet



Country	Mobile operator	Access point name / User Name / Password
Hong Kong	SmarTone	internet
Hong Kong	Sunday	internet
India	Orange, Hutch	www
Iceland	Siminn	gprs.simi.is
India	BPL Mobile	bplgprs.com
India	Airtel	airtelgprs.com
Indonesia	Telkomsel	internet
Ireland	O2	internet
Ireland	Vodafone	live.vodafone.com
Israel	Cellcom	internetg
Israel	Orange	internet
Italy	TIM	uni.tim.it ibox.tim.it
Italy	Vodafone Omnitel	web.omnitel.it
Italy	Wind	internet.wind
Latvia	Latvia Mobile Telefone	internet.lmt.lv
Luxembourg	LUXGSM	web.pt.lu
Luxembourg	Tango	internet
Malaysia	Celcom	celcom.net.my
Mexico	Movistar	internet.movistar.mx
Mexico	Telcel	internet.itelcel.com

<b>Country</b>	<b>Mobile operator</b>	<b>Access point name / User Name / Password</b>
Montenegro	Monet	gprs.monetcg.com
Netherlands	T-Mobile	internet
Netherlands	KPM Mobile	internet
Netherlands	Orange	internet
Netherlands	O2	internet
Netherlands	Vodafone (normal)	web.vodafone.nl
Netherlands	Vodafone (business)	office.vodafone.nl
New Zealand	Vodafone NZ	www.vodafone.net.nz
Norway	Netcom	internet.netcom.no
Norway	Telenor	internet
Pakistan	UFone	ufone.internet
Paraguay	Personal	internet
Paraguay	Tigo	internet.tigo.py
Philippines	Smart	internet
Philippines	Globe	internet.globe.com.ph
Poland	Era	erainternet
Poland	Idea	www.idea.pl
Poland	PlusGSM	www.plusgsm.pl
Portugal	Optimus	internet
Portugal	TMN	internet
Portugal	Vodafone (Telcel)	internet.vodafone.pt

<b>Country</b>	<b>Mobile operator</b>	<b>Access point name / User Name / Password</b>
Romania	Connex	internet.connex.ro
Romania	Orange	internet
Russia	BeeLine	internet.beeline.ru
Russia	Megafon	internet.nw
Russia	MTS	internet.mts.ru
Russia	PrimTel	internet.primtel.ru
Saudi Arabia	Saudi Telecom	Jawalnet.com.sa
Serbia-Montenegro	Mobtel Srbija	internet
Serbia-Montenegro	Telekom Srbija	gprsinternet
Singapore	M1	sunsurf
Singapore	Singtel	internet
Singapore	Starhub	shwapint
Slovakia	Eurotel	internet
Slovakia	Orange	internet
South Africa	MTN	internet
Spain	Amena	amenawap
Spain	Telefonica (Movistar)	movistar.es
Spain	Vodafone	airtelnet
Sweden	Telia	online.telia.se
Sweden	Vodafone SE	internet.vodafone.net

<b>Country</b>	<b>Mobile operator</b>	<b>Access point name / User Name / Password</b>
Switzerland	Swisscom	gprs.swisscom.ch
Switzerland	Orange CH	internet
Switzerland	sunrise	internet
Switzerland	UMC	www.umc.ua
Taiwan	Chunghwa Telecom	internet
Taiwan	Far EasTone	fetnet01
Taiwan	KG Telecom	internet
Taiwan	Taiwan Cellular	internet
Thailand	AIS	internet
Thailand	DTAC	www.dtac.co.th
Turkey	Avea	internet
Turkey	Aycell	aycell
Turkey	Telsim	telsim
Turkey	Turkcell	internet
UK	Jersey Telecom	pepper
UK	O2	mobile.o2.co.uk
UK	T-Mobile	general.t-mobile.co.uk
UK	Vodafone UK	internet
UK	Orange	orangeinternet
Ukraine	Kyivstar GSM	www.kyivstar.net
Ukraine	UMC	www.umc.ua

Country	Mobile operator	Access point name / User Name / Password
USA	T-Mobile	internet2.voicestream.com
USA	AT&T	proxy
USA	Cingular	isp.cingular / <a href="mailto:WAP@CINGULARGPRS.COM">WAP@CINGULARGPRS.COM</a> / CINGULAR1
USA	Cincinnati Bell	wap.gocbw.com / cbw / (blank)
Venezuela	Digital TIM	gprsweb.digitel.ve
Vietnam	MobiFone	Mobi-gprs-wap