

MagicText

Version 2.1

Instructions for Use

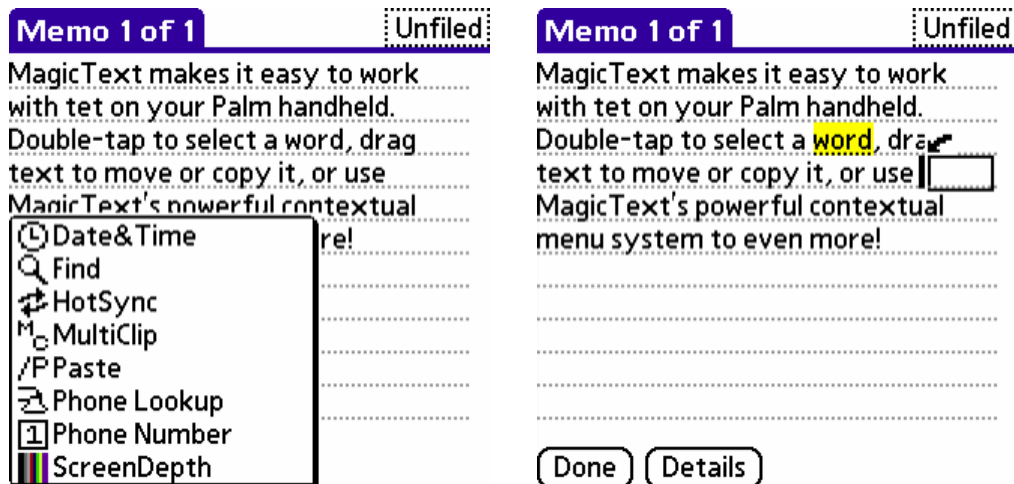
Zero-Sixty Corporation

© 1999-2004 Zero-Sixty Corporation

1. Overview

MagicText is a useful application that makes editing text a snap. Its first function is as a drag-and-drop text editing tool. You can select text and drag it to another part of the text field and drop it there. You can also use it to copy text to another part of a text field. It also provides for double-, triple-, and quad-tap selection. A double-tap will select a word, a triple-tap will select a paragraph, and quad-tapping will select all of the text in the field.

The second part of MagicText is its contextual menu system. A contextual menu is a menu of certain actions which change based on the 'context' of what you're currently doing. This is analogous to 'right-clicking' on desktop systems. Contextual menus are a convenient way to access useful functions at any time. MagicText's contextual menus, like the drag-and-drop feature, are available at ANYTIME you are using your handheld. Examples of MagicText's main features are shown below. On the left is shown the contextual menu and on the right is shown the drag-and-drop feature.



2. Installation and First-Use Instructions

2.1. System Requirements

MagicText requires version 5.0 or above of the Palm OS. MagicText will work on any Palm handheld that has Palm OS version 5.0 or above and will not work on any Palm handheld that has Palm OS older than 5.0.

This version of MagicText has been tested successfully on versions 5.0 through 5.3 of the Palm Operating System on many different hardware devices.

2.2. Installation

You will need to unpack and manually install MagicText. At a minimum, you'll need to install these files:

- MagicText.prc

You should also install whichever plugins you are interested in. It doesn't hurt to install them all; you can easily delete any plugins that you don't use.

Once you've set up the files for installation, synchronize your Palm handheld by performing a HotSync operation.

After MagicText has been synchronized onto your Palm handheld, you will be asked to Reset the device. This is normal.

After the reset, you will need to activate MagicText: Run MagicText, open Options menu and tap Activate.

You are now ready to learn about using MagicText!

2.3. Using Text-Editing Features

Let's go to the Memo Pad application. This is a good testing ground for MagicText. Open a memo which already has some text in it.

Try double-tapping a word. That is, tap the word twice in the same spot. You will see that it selects the whole word. You can double-tap and continue dragging on the second tap to extend the selection word-by-word.

Try triple-tapping a word. Tap it three times. You will see that it selects the whole paragraph. You can triple-tap and continue dragging on the third tap to extend the selection paragraph-by-paragraph.

Try quad-tapping a word. Tap it four times. You will see that it selects everything in the field.

Double-tap a word. Now tap and hold the pen down on the selection and drag the pen around the screen. You should be dragging a rectangle and there should be an arrow pointing to where the text would go if you lift the pen from the screen (drop). Drop the text somewhere. You'll see that it moved (providing the 'Move' first by default setting is checked).

Double-tap a word. Now tap and hold the pen down on it for a second or so. You should see "Copy Mode On..." appear at the bottom of the screen. Now if you drag the text somewhere else and drop it, MagicText will make a copy of the text and paste it into the new spot. Try it.

Another indicator of whether the text will be moved or copied is the arrow-cursor. If the text will be moved it will be an arrow. If the text is to be copied the cursor will be an arrow with a plus sign (+) next to it.

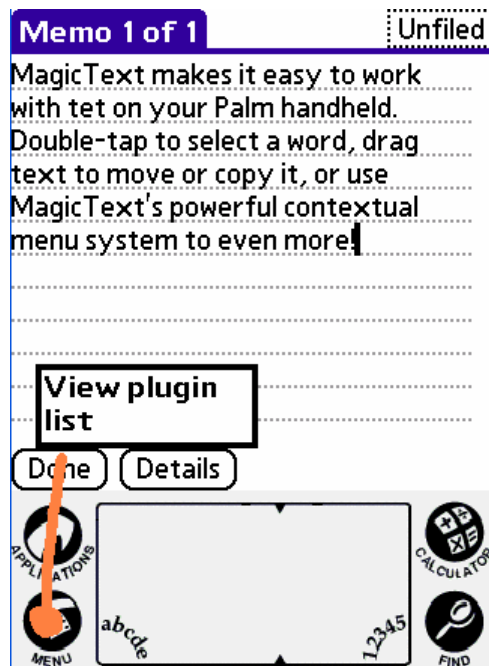
If you drag a selection around and drop it on itself (i.e. the inverted section) nothing will happen.

If you are dragging a selection over a part of the screen where you cannot drop the selection the arrow-cursor will not appear on the screen.

Power User Feature:

- If you have a selection and the pen is dragging on the screen, you can quickly toggle between copy/move mode by pressing the down-arrow hard key.

2.4. Using the Contextual Menu



You can invoke the MagicText contextual menu in one of 2 ways:

- 1) Drag the pen from the MagicText activator button (Menu by default) up into the screen area and release the pen from the screen.
- 2) Drag a text selection to the MagicText activator button (Menu by default).

The image on the right demonstrates the stroke required to invoke MagicText's contextual menus (as per #1 above). Start your stroke (big green dot) in the MagicText activator button, and drag it (green line) up until you see feedback on the screen. Then let go!

The contextual menu will appear. Please note that each item in MagicText's contextual menu is a plugin. Only the relevant plugins appear in the list, hence it is a "contextual menu." MagicText checks the context of the situation and determines what plugins are appropriate. This means that not all plugins will appear at all times.

3. Preferences

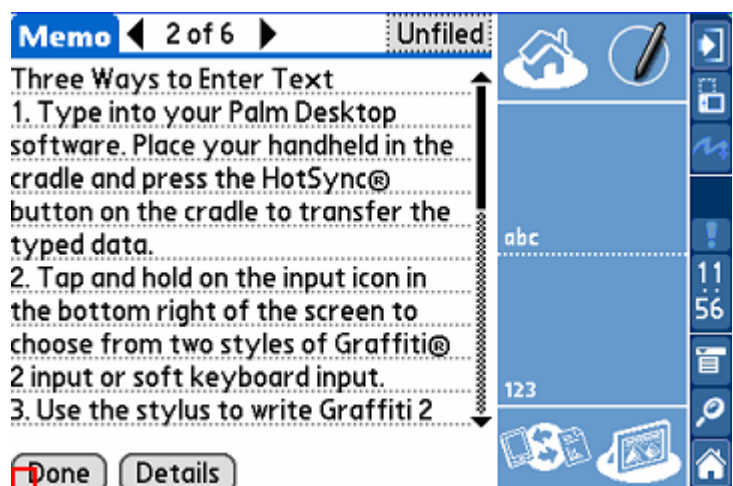
To get to the MagicText preferences, run MagicText and select Preferences menu item. The preferences should appear as pictured.



Tap Sensitivity: This setting is for double-, triple-, and quad-taps. It determines how close together on the screen (proximity in space) the taps need to be in order to register as a double-tap or triple-tap etc. Low is not so close, Medium is closer, and High is closest. (The range is from approximately 4-12 pixels.)

Multi-Tap Speed: This setting is also for double-, triple-, and quad-taps. It determines how close together in time (proximity in time) the taps need to be in order to register as a double-tap or triple-tap etc. The range is from Fastest to Slowest. (The range is from approximately 1/3 of a second to one whole second.)

Copy/Move Toggle Time (seconds): This setting determines the amount of time you need to hold a selection in place before the function will switch between move and copy. It will only toggle if you have the pen over the initial selection i.e. the inverted section).



MagicText Activator Button: This is the button that you need to drag a selection over or drag up from to activate MagicText's contextual menu. The default button is the 'Menu' button. There is a setting called 'Silkyboard-safe' for users of Silkyboard. If this choice is selected, the activation area for MagicText's contextual menu will be the area shown in RED below. This way, you can use MagicText without interfering with Silkyboard.

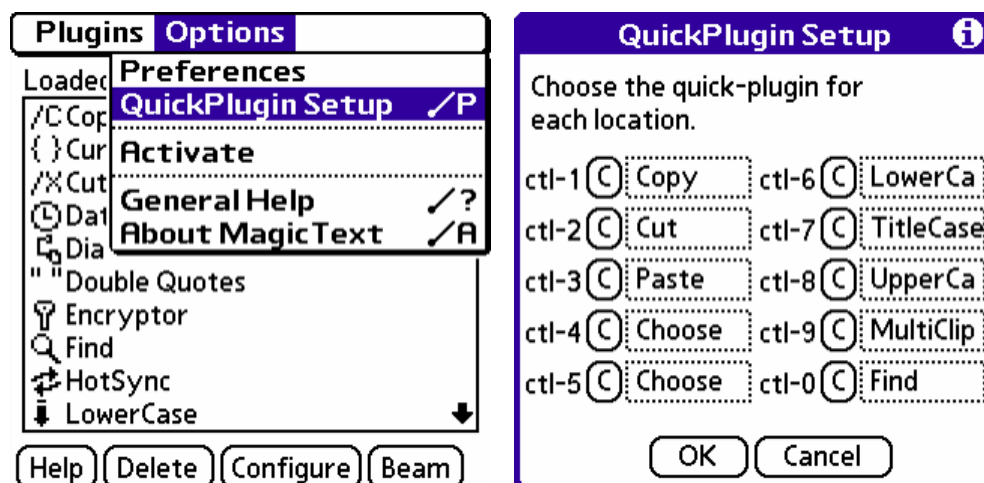
'Move' first by default: If this box is checked then the drag-and-drop function will always be 'move' when you first select and drag a piece of text. If you hold the text in place for Copy/Move Toggle Time seconds then it will switch to 'copy.' If you hold it in place for Copy/Move Toggle Time seconds again, it will switch back to 'move.' And so on. If the box is unchecked then 'copy' will be the first function for each selection you make.

Enable Smart-Selection: If you have this checked then MagicText will automatically select the space after a word or sentence after double- or triple-tapping. It will also insert a space after a word or selection after you drag-and-drop a piece of text to a new location in the field.

Activate after reset: If you have this checked then MagicText will automatically activate after handheld reset.

4. The QuickPlugin Feature

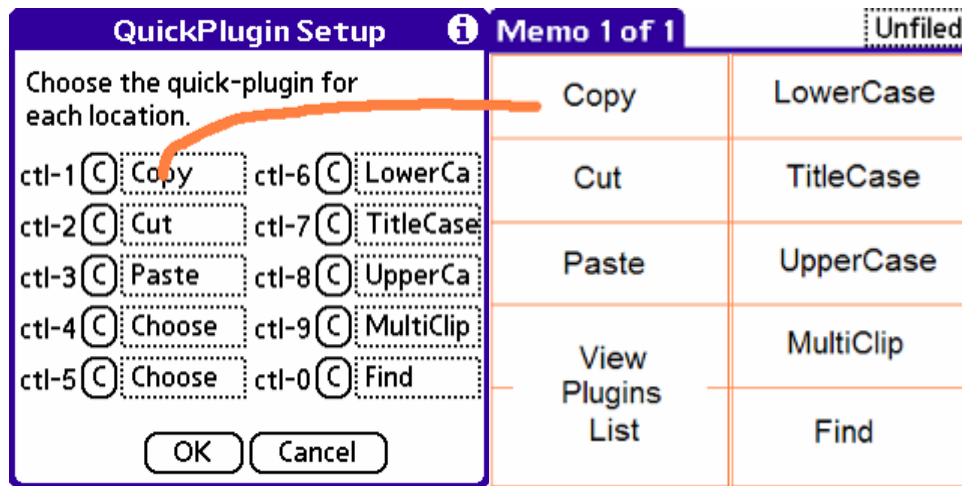
A new feature has been introduced with version 1.6 of MagicText: the QuickPlugin feature. Normally, to access a MagicText plugin, you have to bring up the list of plugins, then choose the one you want to use. While this is fine for occasional use, for plugins that are used often it can just be a bit too much to do. Enter QuickPlugin, a feature that allows you to map up to 10 MagicText plugins to a single stroke!



To configure the QuickPlugin setup, choose the QuickPlugin Setup menu option from the MagicText application as shown below.

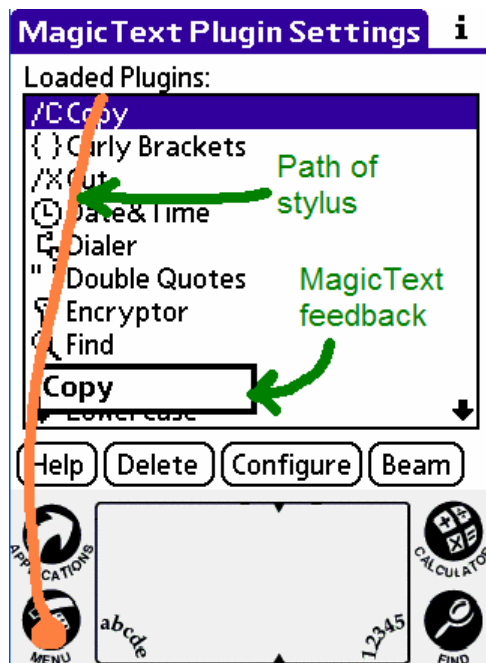
To set the QuickPlugin for a particular location tap the dotted-box and then choose a plugin from the list presented. You can press the 'C' button to restore the corresponding QuickPlugin location to the default behavior, which is to display the MagicText contextual menu. The default behavior is indicated by the word 'Choose'.

There are 10 QuickPlugin locations that you can configure. But what is the stroke to activate each one? Imagine that the screen is divided into 10 sections. Each of the QuickPlugin settings on the QuickPlugin Setup screen corresponds to the analogous region on the display. This is demonstrated by the image below, which shows how the QuickPlugin settings on the left map to areas of the screen on the right. The QuickPlugin at the top-left of the QuickPlugin Setup screen is set to 'Copy,' which corresponds to the area of the display as shown on the right. To activate the QuickPlugin associated with a particular section, you should drag the pen from the MagicText Activator button to the corresponding area of the screen, then let go. MagicText will display the QuickPlugin, which will be activated as you drag the pen. It sounds confusing, but it's quite easy once you try it.



Here's a walkthrough of using the QuickPlugin feature:

1. Set up your QuickPlugin settings.
2. Press the OK button to save the settings
3. Place the pen in the MagicText Activator region (the MENU area, by default). Don't lift the pen!
4. While holding the pen down, drag the pen into the screen area. MagicText will show you which QuickPlugin you're currently over.

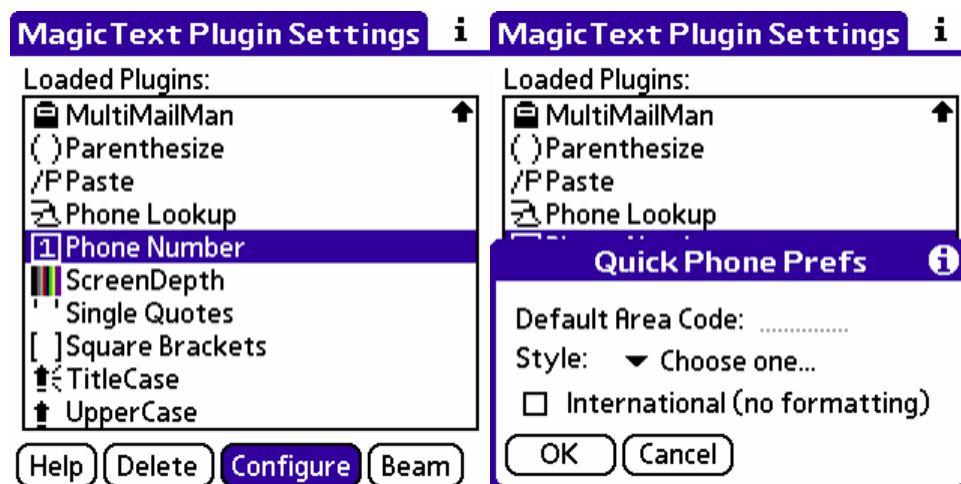


The image below shows an example of what the screen should look like with the configuration from above if you drag the pen as indicated by the green line (the large dot is the starting point of the stroke).

NOTE:

Although the QuickPlugin feature is great, you will still want to see the Contextual menu from time to time. There is always a little space, right above where you start dragging the pen, which will always say 'View Plugin List.' This allows you to have all 10 QuickPlugin locations in use and still have access to MagicText's contextual menu.

5. More About Plugins



5.1. Configuring Plugins

Some plugins, such as the Phone Number plugin, have preferences of their own. You can configure a particular plugin's settings by selecting the desired plugin and pressing the 'Configure' button in the MagicText application.

NOTE:

Not all plugins are configurable. If pressing 'Configure' seems to have no effect that means that the selected plugin does not have any configuration options.

5.2. Getting Help, Deleting, and Beaming

You can get help for a plugin, delete a plugin, or beam a plugin to another user from the MagicText application. Simply select the plugin of interest and press the appropriate button.

NOTE:

If you are beaming a plugin to another user and they **ALREADY** have a version of that plugin, they should use MagicText to **DELETE** the installed version of the plugin before you beam it to them. Otherwise, the beamed plugin will not be successfully received.

NOTE:

If you try to delete a MagicText plugin from another application such as FlashPro, the plugin will **NOT** be able to be deleted. You should always delete plugins from **WITHIN** the MagicText application.

5.3. Adding New Plugins to MagicText

Every MagicText menu item is a plugin. This means that it's easy to add new features to the MagicText menu; you can install plugins that you get from the internet, or beamed from another MagicText.

We keep a repository of plugins on our web site at:

<http://www.installigent.com/magictext>

NOTE:

If you ever install a new plugin, it won't appear in the contextual menu until MagicText is aware that a new plugin has been installed. You can have MagicText search for plugins simply by running the MagicText application and choosing 'Search' from the menu. In most cases, MagicText is aware that you've installed a plugin and will automatically ask you if you want to search when you launch the program after installing a new plugin. Once MagicText has searched for plugins, the new plugin should be visible in the plugins list.

5.4. Plugins and Flash ROM

Although it is possible to place a plugin in FLASH ROM with a utility such as Flash Pro, certain steps must be taken to ensure success:

1. Deactivate MagicText.
2. Press 'Reset.'
3. When the Palm handheld is done booting, run the Flash application. **IMPORTANT - you must not run the MagicText application before the Flash utility! If this happens, start again at step 1.**
4. MOVE the desired plugin(s) into Flash.
5. Re-activate MagicText, and that's it!

6. Miscellaneous

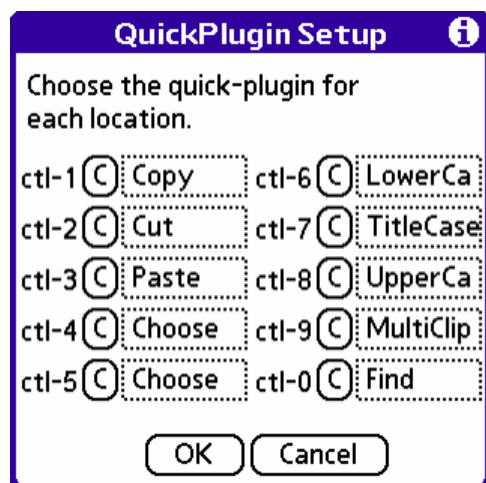
6.1. Lefties

MagicText is Lefty-aware. Lefty is a small program which allows you to tell your Palm that you're left-handed. Certain applications (such as MagicText) will alter the way the user interface is laid out to better suit lefties. You can get Lefty on the web at:

<http://www.strout.net>

6.2. Keyboard Support

Starting with version 1.6, MagicText has explicit support for keyboard shortcuts. Keyboard shortcuts are supported as long as the keyboard driver passes CONTROL keystrokes to the system.



The current version of the GoType driver as of this writing (July 11, 2000) does NOT work with this feature. The Stowaway keyboard does support this feature.

To the left of each QuickPlugin Setup is the keystroke that can be used on your keyboard to activate that plugin. For instance, to activate COPY in the example to the right, you should enter ctl-1 (hold down the CONTROL key while pressing the '1' key).

You can get a list of ALL plugins with the keystroke 'ctl-m'. When the list of all plugins is displayed, you can use type-to-scroll to choose a plugin; that is, enter the first few letters of the desired plugin's name and the list will scroll to that choice. If that plugin isn't chosen automatically, press enter to select it.

7. Conclusion

We hope that this manual has been helpful in learning the basics of MagicText operation. We feel that MagicText is a truly useful addition to any Palm handheld, and hope that you feel the same way.

If you have any more questions, comments, bug reports, praise, or anything else interesting to say, please email support@installigent.com.

Please be sure to visit the MagicText web site for information, new plugins, and video tutorials of the MagicText application.

<http://www.installigent.com/magictext/>