

iServices v1.4
User's Guide
Tamalo.com – February 2003

Introduction

You are a system or network engineer and you want to quickly get information about IP network services (port, protocol, etc..). **iServices** can help you in searching information in the well known port database. Our network service database contains more than 700 registered network ports and is regularly updated.

1. Installation

Please refer to the documentation of the Palm Desktop® product on the procedure to install PalmOS® applications. The two following files need to be downloaded on your handheld.

- `iServices-1.4.prc` iServices v1.4 for PalmOS® 2.0 and higher
- `iServicesDB-2003.prc` Internet service database for iServices

It is strongly recommended to make a backup copy of your handheld data before installing any application. It is also recommended to uninstall first any previous version of iServices.

2. Hardware and Software requirements

This application can be run on any handheld device running PalmOS® 2.0 or higher. It has also been successfully tested on the new PalmOS® 5. The application takes approximately 56 Kbytes of memory (16 Kbytes for the application itself and 40 Kbytes for the database).

3. Launching the application

Once installed, the application appears in the PalmOS® launcher area as shown in the figure below (figure 1). Tap on the **iServices** icon to launch it.

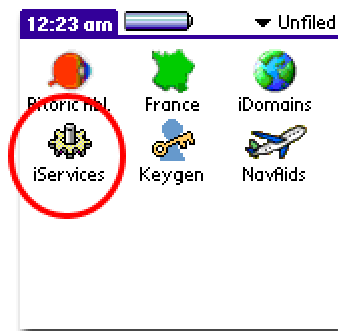


Figure 1

4. Viewing service information

This chapter contains a short description (no more is needed) on how simple is to use **iServices**.

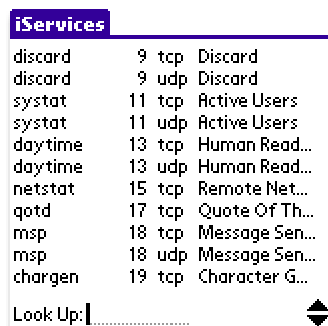


Figure 2 : Main view

- Once started, the first eleven network services (one per line) are shown on the tabular view.
- The service name (first column), the network port number (second column), the network protocol (third column) and a short description (last and fourth column) are shown for each Internet network service.

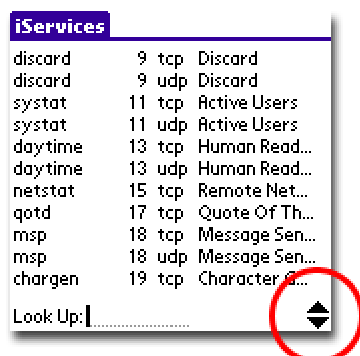


Figure 3 : Scroll service list

- Tap on the arrow buttons to scroll up or down the service list as show on the figure 3.
- It is also possible to use the hardware keys up and down of the handheld to navigate through the list.

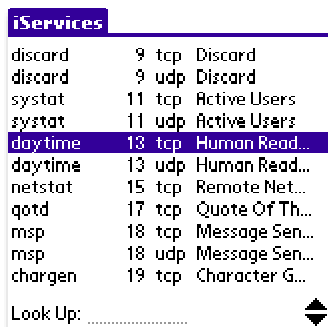


Figure 4 : Service selection

- To get detailed information on a particular network service, tap on it.
- The corresponding line is highlighted and a dialog box is opened.



Figure 5 : Service Info

- The service name, the port number, the network protocol, aliases and a short description are shown.
- To close the window, tap on the **OK** button.

5. Looking for a service name or a network port number

Use the **Look Up** field located at the bottom of the main view to search for a particular service name or a network port number. Just write the name or the port number you are looking for, with the graffiti pad or the keyboard.

How the search is done ? Firstly, the string is compared with the service name. If no match is found, the string is then compared with the network port number. If a match is found, the corresponding line is highlighted. Note that the search is case insensitive.

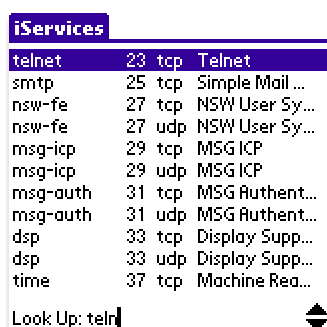


Figure 6 : Looking for the string "telnet"

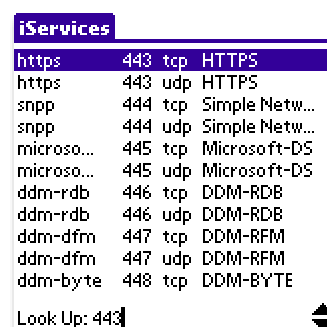


Figure 7 : Looking for the string "443"

6. Sorting database order

It is possible to sort the list by service or by network port. The default when launching **iServices** for the first time is “**sort by port number**”. You can also choose if the sort order should be temporary or persistent.

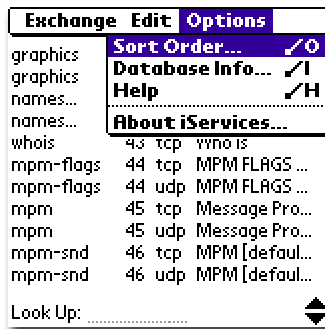


Figure 8

- Select the **Sort Order...** item from the **Options** menu.
- A dialog box is displayed.



Figure 9

- Select how the database will be sorted with the popup list.
- Check the option **Remember sort order** if you want to make this sort order persistent when exiting the application.
- Tap on the **OK** button to validate the action.

Sorting the database does not affect the display. The first column is always the service name and the second is always the corresponding port number.

7. Getting database information

In order to know if your database is current, refer to the **Database Info** window. Compare the result with those given with the latest update available on our website at <http://www.tamalo.com>.

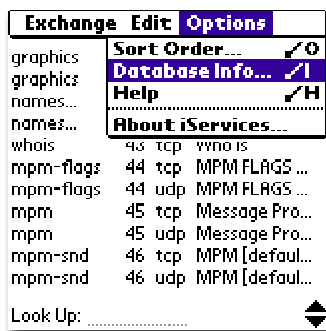


Figure 10

- Select the **Database Info...** item from the **Options** menu.
- A dialog box is displayed.

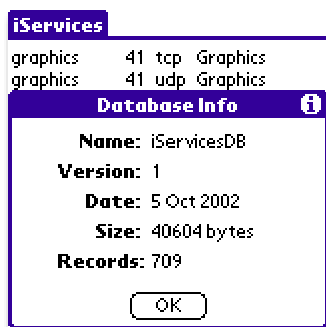


Figure 11

- The parameter list includes the version number, the creation date, the size and the record number.
- Close the window by tapping on the **OK** button.

8. Beaming

If your handheld is equipped for, you can use the infrared port to beam the application and all the necessary data to a friend's handheld. Please note that the application is composed of two components.

- The application itself
- The application's database

Use the **Exchange** menu from the application menu bar to beam the software components.

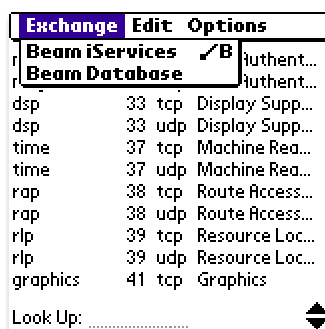


Figure 12 : Beaming

9. *Disclaimer*

In no situation should the authors be liable in any party for direct, indirect, special, incidental or consequential damages, including lost profits arising out of the use of this software and its documentation, even if the authors have been advised of the possibility of such damage.

The authors specifically disclaim any warranties, express or implied, including, but not limited to, any implied warranties of merchantability and fitness for a particular purpose.

The software is provided on an "as is" basis and the authors have no obligation to provide maintenance, support, updates, enhancements or modifications.

By using this software you are agreeing to be bound by the terms of this disclaimer.

In plain English: **USE AT YOUR OWN RISK.**

10. *Support*

We will be pleased to help you to use this freeware application. Please let us know how we can improve it by sending an e-mail to : support@tamalo.com

Also, come and visit us at : <http://www.tamalo.com> where updates to this application and many other great applications developed for the convenience of the Palm user community are available.

11. *License*

This application is **FREEWARE**. You are allowed to freely distribute it but only as the original package with all the original files and keeping the original copyright. You are NOT allowed to sell it or make money with it in any way.

It is provided AS-IS without any warranty of any kind.

12. *Acknowledgements and References*

We would like to specially thank Dacha and Dool for testing and helping us to improve our software.

13. *Who we are*

Tamalo.com is a wonderful adventure started in 1999 by Benoit DELAUNAY and Fabio HERNANDEZ, two computer professionals very excited by the possibilities of the PalmOS® handheld. Based in Lyon (France), we are providing some freeware applications to the Palm user community, as well as consulting services for software companies.

When not having fun developing PalmOS® applications, both of us work for a French scientific research institute.