



Documentation

Also available at: www.Hobbyistsoftware.com / InitiateDocumentation.htm

[Hobbyist Software Forum](http://www.hobbyistsoftware.com/forum)
www.hobbyistsoftware.com/forum

Thanks for trying **Initiate**.

Initiate is a new type of launcher - designed for Smartphones and other converged devices.

Initiate Light is a cut-down version for non-Smartphone users. For you - it's a fast, free application launcher which also handles contacts.

It's different to what you're used to - so please take a little time to read about how to make the most of it.

Three things you should know

- To launch an application or contact, type enough letters of the item to identify it.
- Initiate uses helpers to do jobs like sending an sms or an email. You can choose the helpers you want **Initiate** to use in the preferences menu.
- You should refresh the list after loading new applications, contacts, bookmarks, etc. Just tap on the bottom left icon in the main view to do this.

Topics

- [Installation](#)
- [Registration](#)
- [Getting Help](#)
- [Getting Started](#)
- [The Main view](#)
- [Managing files](#)
- [Customising Initiate](#)

Advanced Topics

- [Smart Search](#)
- [Smart Guess](#)
- [Adding Bookmarks](#)

[Licences](#)

Installation

- Double click on Initiate_xxxx.prc. This should load initiate into your installer program
- If you want to install different backgrounds, you should also install [JpegLib.prc](#)
- Hotsync
- That's it.

Registration

If you are using the full version of **Initiate**, please register wherever you downloaded the software, or at www.HobbyistSoftware.com

- Launch **Initiate**
- Select Register from the menu (tap at the top left of the screen or press the menu button)
- Type in your registration code
- Tap the 'Register' button

Getting Help..

There are instructions on every page except the main page. You can access them by tapping the (i) icons in the top right of the screens.

Getting Started...



The first time you launch **Initiate**, you will be shown this introduction page

The tutorial is a quick start guide. Since you're reading this document you can skip it!

Helpers are covered immediately below

You can choose whether to try **Initiate** or to use **Initiate** Light. If you don't have any Helpers that you want to use, then **Initiate** Light will be the best option for you.

Helpers allow you to choose the applications that will do the work for **Initiate**.



Email, SMS and Phone Calls will only show the applications that identify themselves to **Initiate** as being able to do the relevant jobs on your device.

Audio Player, Contacts, Memos and Web Browser will show all the applications that **Initiate** supports - though they will be in brackets if **Initiate** can't find them on your device. (NB - they must be in RAM and not on the SD card for Initiate to be able to use them)

Simply choose the applications that you want for the job. Remember that apart from Contacts, Helpers are not supported in **Initiate** Light.

Now you're ready to launch! Just tap on the Launch button to start.

The Main View

The first new concept in Initiate is that you search by entering letters. When **Initiate** is first run, it searches in a simple alphabetical list (SmartSearch is a more advanced search method which is covered later).

In this example, the user has typed Ge and **Initiate** has found GeorgeWolhuter.

As there is only one item that begins with Ge **Initiate** will automatically launch this item.

If there are a number of items beginning with Ge then you can choose how to select the one you want.

Managing the List



Launching Methods (once you can see the item you want):

- 1) Enter another letter or two until your item is the only one that matches
- 2) Tap on the item you want
- 3) Scroll to select the item then select (centre key). If you don't have a centre key you can assign a button to this job in Preferences.
- 4) Scroll to select the item then enter <return/newline>

AutoLaunch:

If you didn't want **Initiate** to launch automatically (perhaps you want to beam the contact or add it to your favourites list) then you should turn AutoLaunch off. To do this simply tap on the AutoLaunch icon and you will see it change to a pause button.

AutoLaunch makes most things faster - but you must turn it off when you want to manage files

Favourites:

Favourites are a very simple feature. There are probably a handful of applications and contacts that you use the most. Make these your favourites. Turn Favourites on (tap on the heart icon) and they will be the first items you see when you launch **Initiate**.

As soon as you start searching you will search the whole list again. Favourites are only for the first items you want to see - so you can launch them instantly.

To select your favourites, select them in the full list (remember to turn Autolaunch off), then tap and hold your stylus on them until a menu appears. Now select 'Add to favourites'. Alternatively select the item then open the normal menu and select Record/Add to Favourites.

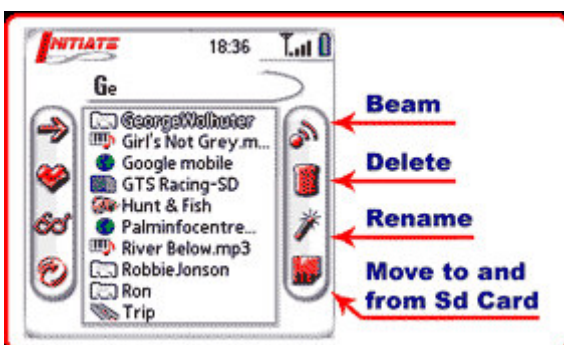
Views:

Views let you define a set of different ways of listing items. The default views are Everything (shows everything), Applications and Contacts (you get the idea!).

To switch views either tap on the View icon to toggle through them, or tap and hold the View icon to get a list of all active views.

We'll cover defining views later...

Managing files



File management is simple. Simply select the item you want to work on (remember to turn off AutoLaunch!) and tap on an icon on the right.

You can beam and delete contacts and you can do anything to applications!

You can also act on items in the list by tapping on them and holding down until a menu appears. This menu offers options like Rename, Beam, etc.

Similarly, you can select an item and tap on the main menu then select an option from the Record menu.

Because there are ways of acting on items without the icons on the right some skins don't even include those icons.

Customising *Initiate*...

Tap on Menu or the top left of the launch screen then select Options/Views.

You can select (and rename) up to 5 views.

There are 3 options for how contacts appear. By default, both FirstName, LastName and LastName, Firstname are shown. This lets you search easily by either the first or last name - whichever you remember.

If you use the company names for contacts you might want to list by company as well. Or you might want to have a separate view that is company only...

Audio files lists any audio files in the default mp3 folder on your sd card. Normally this folder is /Audio/

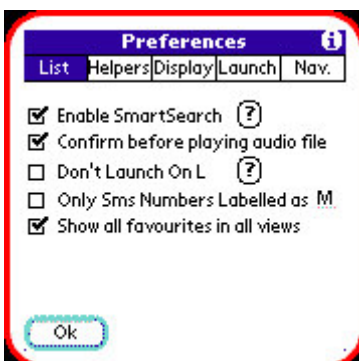
Bookmarks are stored in a special format in the memo application. You can download them directly from the hobbyistsoftware.com site or directly to your Palm Pilot through the applications/Updates and Downloads menu in *Initiate*

There is a section at the end of this document which explains how to create bookmark memos of your own.

Defining Views



List Preferences



Tap on menu then Options/Preferences to access the Preferences tab.

List Preferences controls the use of the main list.

Enable Smart Search:

This is a recommended feature for power users. It is covered under advanced topics later.

Confirm before playing audio file:

Initiate will check before playing an Mp3.

Don't launch on L:

Vital if you use graffitti 2. This option stops autolaunch from triggering when you write an L. Very important if you are about to turn that L into an i.

Only SMS Numbers Labelled as ...:

Allows you to set the letter that you consider to be SMS able'. This will be m (mobile and main) in an English Palm, something else in other languages.

Show all favourites in all views:

This option is recommended and enabled by default. It means that when you launch **Initiate**, your favourites are shown whatever view you are in. This gives you instant access to your most used items without having to select a view. Some people prefer favourites to show only if they match the view.

You can completely alter the look of **Initiate**.

Skins let you re-define both the layout and the look of Initiate.

Backgrounds:

- **Solid Colour Backgrounds:** You can choose any colour as a background.
- **Jpeg Backgrounds:** To use jpeg backgrounds, you will need to install the [JpegLib.prc](http://www.hobbyistsoftware.com/JpegLib.prc). You can use jpeg images from your sd card if you have one, or download images which have been converted to load into the main memory of your palm. For instructions on how to make your own backgrounds that load into palm memory, see www.hobbyistsoftware.com

Display Preferences



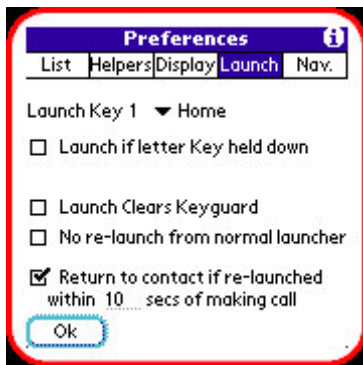
You can download [skins and backgrounds](http://www.hobbyistsoftware.com) at www.hobbyistsoftware.com or through the **Applications/ Updates & Downloads** menu.

Shadows allow you to surround text with a shadow in another colour. This is really useful if you have a transparent list with a background behind it. As the background changes colour a single colour of text will not be visible in places. By choosing different text and shadow colours you should be able to read the items on any background

Launching

These options control how **Initiate** launches and how it behaves between launches.

Launch Key 1:



Allows you to assign **Initiate** to launch automatically when you press a certain key (only works for Palm OS 5 and above)

The recommended launch key is the Home key. You can customise **Initiate** to allow the Home key to launch either Initiate or an alternative launcher when in **Initiate** (see next menu). This allows you to toggle easily between **Initiate** and your standard launcher.

Launch if Letter key held down:

This allows you to hold a key to launch **Initiate**. The letter you held down is entered as the first search letter. This has only been tested on the treo600 - please let me know if it works on other devices!

Launch Clears Keyguard (treo600 only):

This allows a launch from one of the four hard keys to automatically clear the keyguard (also compatible with the Butler alternative Keyguard)

No re-launch from normal launcher:

This allows you to launch with the Home key, then press it again to launch your alternative launcher - then press again to do whatever happens in your alternative launcher (e.g. change tab) without going back to **Initiate**. As soon as you leave your alternative launcher **Initiate** will launch on the home key as normal (assuming it is assigned to the home key).

Return to contact if re-launched...:

Situation: You find a contact. You call their office number. They don't answer. Now launch **Initiate** - you are still in their contact, so can now instantly call their mobile or home number.

These options give you more ways to navigate while in **Initiate**

You can assign several alternative actions to the hard keys and home button. This allows you to use the hard keys to mimic the left and right of a navigation rocker button, or to assign various other actions.

I recommend assigning the Normal Launcher to Home Key so you can easily toggle between **Initiate** and the built in launcher or whichever alternative launcher you want to use.

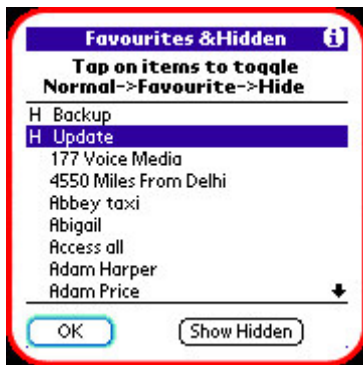
Navigation



Favourites

This screen gives you another way to select favourites - and also applications that you would like to hide.

Tap on an item to switch it from Normal to Favourite and to Hidden.



Tap on 'show Hidden' to see previously hidden items (they are at the bottom of the list)

Register :

If you like **Initiate** - please register. It took many months of work - and your registration fees are what I live on.

Updates and Downloads

This lets you open a web page on my site showing the latest versions of all my software, including some beta versions. They are all in .prc format ready for direct download to your handheld. Please give them a try!

You can also open a page from here which lets you download skins and bookmarks to Initiate.

Application Menu



Beam **Initiate**

Beam **Initiate** to a friend.

Soft Reset

Reset your device.

Smart Search

Smart Search is a much faster way to find items in the list.

When you enable Smart Search, Initiate looks for any items which:

- Have the same first letter as the text you have typed.
- Have all the other letters you have typed in the right order (though possibly with other letters between them)

This means you can search for items using the letters in an item which are less common.

When you want to find an item first think which which letters are more unusual and type those.

This makes for very fast searching.

Typing MPD will bring up 'Memo Pad'

Typing FZ will bring up 'Filez' and 'Frobnitz'.

Typing JSM will bring up John Smith and Jim Storm.

To find Rob Jonson, type RJN

Smart Guess

Smart Guess gives you more ways to enter phone numbers and web addresses

If there is no item that matches what you have typed, Initiate will try to guess what you have typed, and either perform the right action, or give you some options.

Guesses:

If you type a search beginning with www or ending in .com, .co..uk, .net, .org then Initiate will complete a web address and open the web page. If there is no http:// or no www. Initiate will add those. If there is no domain at the end, Initiate will add .com

- type www.gmail and Initiate will open http://www.gmail.com
- type gmail.com and Initiate will open http://www.gmail.com

If you type a search containing an '@', initiate will open your email helper with the given search as an email address

- type me@mail.com and Initiate will start an email to me@mail.com

Options:

If there isn't an obvious action, then Initiate will give some options.

The first option is made by translating letters into numbers using the standard phone letter/number mapping

e.g. 1800 call att becomes 1800 225 5288

The second option is made by translating letters into numbers using the way that letters are placed on the treo smartphones

e.g. ert dfg xcv becomes 123 456 789 (this makes it slightly faster to type numbers to dial on a treo)

The third option is made by turning the search into a web address

e.g. gmail becomes www.gmail.com

This makes for Initiate helpful even if what you want isn't already in your list!

Creating Bookmarks

Bookmarks are stored as memos in the memo pad. The simplest way to see how they are formatted is to download some example bookmarks from www.hobbyistsoftware.com.

The full description of the bookmark format is given at www.hobbyistsoftware.com.

That's It

If you've read this far, drop me an e-mail at rob@hobbyistsoftware.com and I'll tell you a secret...

The Following licence applies to JpegLib:

The license below is known as the modified BSD license, with an additional reference to the Independent JPEG Group to comply with its terms. It applies to the source code written specifically for the Palm, not to the work of the Independent JPEG Group (see the remark below).

Copyright (c) 2003, Yves Piguet.

All rights reserved.

Based on the work of the Independent JPEG Group.

Redistribution and use in source and binary forms, with or without modification, are permitted provided that the following conditions are met:

Redistributions of source code must retain the above copyright notice, this list of conditions and the following disclaimer.

Redistributions in binary form must reproduce the above copyright notice, this list of conditions and the following disclaimer in the documentation and/or other materials provided with the distribution.

Neither the name of the Yves Piguet nor the names of its contributors may be used to endorse or promote products derived from this software without specific prior written permission.

THIS SOFTWARE IS PROVIDED BY THE COPYRIGHT HOLDERS AND CONTRIBUTORS "AS IS" AND ANY EXPRESS OR IMPLIED WARRANTIES, INCLUDING, BUT NOT LIMITED TO, THE IMPLIED WARRANTIES OF MERCHANTABILITY AND FITNESS FOR A PARTICULAR PURPOSE ARE DISCLAIMED. IN NO EVENT SHALL THE COPYRIGHT OWNER OR CONTRIBUTORS BE LIABLE FOR ANY DIRECT, INDIRECT, INCIDENTAL, SPECIAL, EXEMPLARY, OR CONSEQUENTIAL DAMAGES (INCLUDING, BUT NOT LIMITED TO, PROCUREMENT OF SUBSTITUTE GOODS OR SERVICES; LOSS OF USE, DATA, OR PROFITS; OR BUSINESS INTERRUPTION) HOWEVER CAUSED AND ON ANY THEORY OF LIABILITY, WHETHER IN CONTRACT, STRICT LIABILITY, OR TORT (INCLUDING NEGLIGENCE OR OTHERWISE) ARISING IN ANY WAY OUT OF THE USE OF THIS SOFTWARE, EVEN IF ADVISED OF THE POSSIBILITY OF SUCH DAMAGE.

The Following licence applies to SF Cave:

This software is open source under "The modified BSD license."

Copyright (c) 1998,2002 Sunflat

Redistribution and use in source and binary forms, with or without modification, are permitted provided that the following conditions are met:

* Redistributions of source code must retain the above copyright notice, this list of conditions and the following disclaimer.

* Redistributions in binary form must reproduce the above copyright notice, this list of conditions and the following disclaimer in the documentation and/or other materials provided with the distribution.

* The name of the author may not be used to endorse or promote products derived from this software without specific prior written permission.

THIS SOFTWARE IS PROVIDED BY THE AUTHOR ``AS IS" AND ANY EXPRESS OR IMPLIED WARRANTIES, INCLUDING, BUT NOT LIMITED TO, THE IMPLIED WARRANTIES OF MERCHANTABILITY AND FITNESS FOR A PARTICULAR PURPOSE ARE DISCLAIMED. IN NO EVENT SHALL THE AUTHOR BE LIABLE FOR ANY DIRECT, INDIRECT, INCIDENTAL, SPECIAL, EXEMPLARY, OR CONSEQUENTIAL DAMAGES (INCLUDING, BUT NOT LIMITED TO, PROCUREMENT OF SUBSTITUTE GOODS OR SERVICES; LOSS OF USE, DATA, OR PROFITS; OR BUSINESS INTERRUPTION) HOWEVER CAUSED AND ON ANY THEORY OF LIABILITY, WHETHER IN CONTRACT, STRICT LIABILITY, OR TORT (INCLUDING NEGLIGENCE OR OTHERWISE) ARISING IN

ANY WAY OUT OF THE USE OF THIS SOFTWARE, EVEN IF ADVISED OF THE
POSSIBILITY OF SUCH DAMAGE.