

# Tamoggemon Software

*FileFind*

version 4.0

Operators manual

## Table of contents

<a href="#">Table of contents.....</a>	<a href="#">2</a>
<a href="#">Preamble.....</a>	<a href="#">2</a>
<a href="#">Purpose of FileFind.....</a>	<a href="#">2</a>
<a href="#">Program compatibility.....</a>	<a href="#">2</a>
<a href="#">Installation.....</a>	<a href="#">2</a>
<a href="#">Launching FileFind.....</a>	<a href="#">2</a>
<a href="#">Searching for files.....</a>	<a href="#">3</a>
<a href="#">Choosing the search folder.....</a>	<a href="#">3</a>
<a href="#">Searching for files by name.....</a>	<a href="#">4</a>
<a href="#">Searching for files by content.....</a>	<a href="#">5</a>
<a href="#">Searching for files by attribute.....</a>	<a href="#">5</a>
<a href="#">Searching for files by date.....</a>	<a href="#">6</a>
<a href="#">Searching folders.....</a>	<a href="#">6</a>
<a href="#">Starting a search.....</a>	<a href="#">7</a>
<a href="#">Displaying results.....</a>	<a href="#">7</a>
<a href="#">Registering.....</a>	<a href="#">8</a>
<a href="#">Feedback/Support.....</a>	<a href="#">9</a>

## Preamble

Congratulations on purchasing/evaluating FileFind, the latest of the Tamoggemon offerings. This program is designed to serve you forever. Although Tamoggemon can not take any warranties for its function or can be held liable for any damages; no malfunctions have been reported in the beta phase.

Please read this manual carefully, it contains important information for making your FileFind experience as comfortable as possible.

## Purpose of FileFind

Nowadays, Palm OS handhelds and smartphone's memory cards and hard drives can contain literally thousands of files. Finding the right file on such a box is heavy work – Tamoggemon FileFind to the rescue.

FileFind lets you search your memory card for specific files – Windows File Find for your Palm OS handheld!

## Program compatibility

FileFind is compatible with all OS5 handhelds that support expansion cards or an internal memory area(T5, LifeDrive). FileFind also works on some OS4 handhelds(with VFS support); but reliability is not as high as on OS5 handhelds.

## Installation

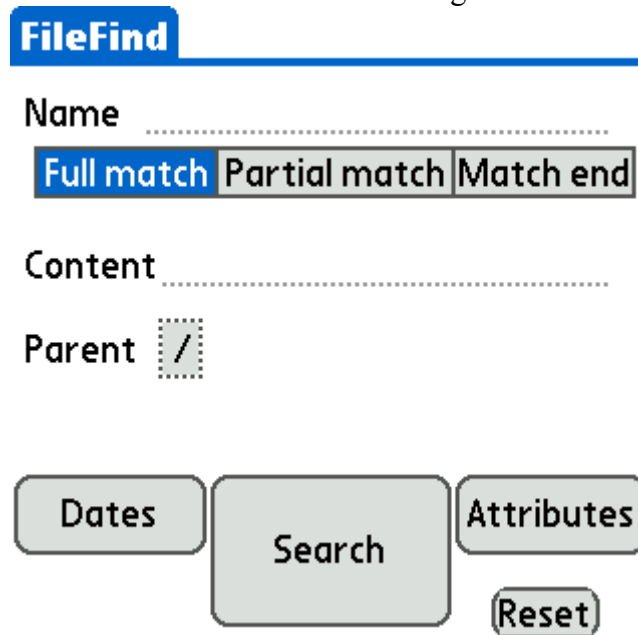
Install the file FileFind.prc from your distribution file onto the handheld's RAM or onto a memory card. Then HotSync the handheld in order to transfer the file.

## Launching FileFind

Click on the FileFind icon to start FileFind. FileFind can start up in result display mode or in Search mode, both of which are documented below!

## Searching for files

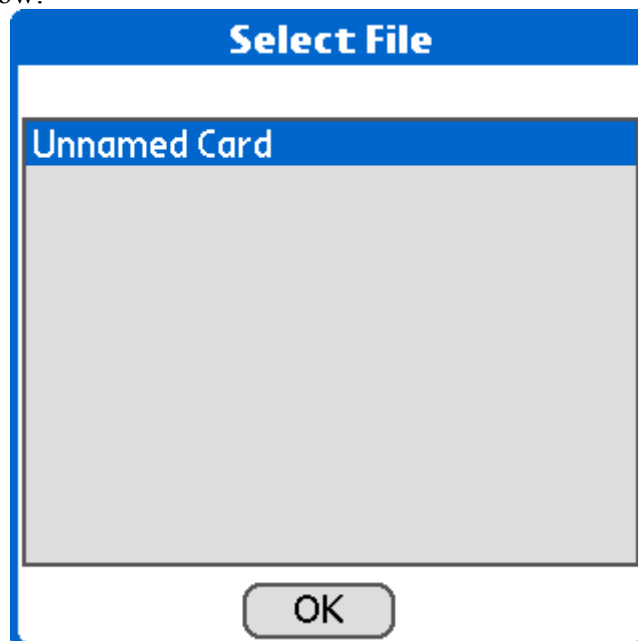
Searching files in FileFind is done from the Search dialog shown below:



The FileFind search dialog features a blue title bar with the text "FileFind". Below the title bar are three input fields: "Name" with a dotted line, "Content" with a dotted line, and "Parent" with a dotted line containing a forward slash. Under the "Name" field are three buttons: "Full match" (highlighted in blue), "Partial match", and "Match end". At the bottom of the dialog are four buttons: "Dates", "Search" (the largest central button), "Attributes", and "Reset".

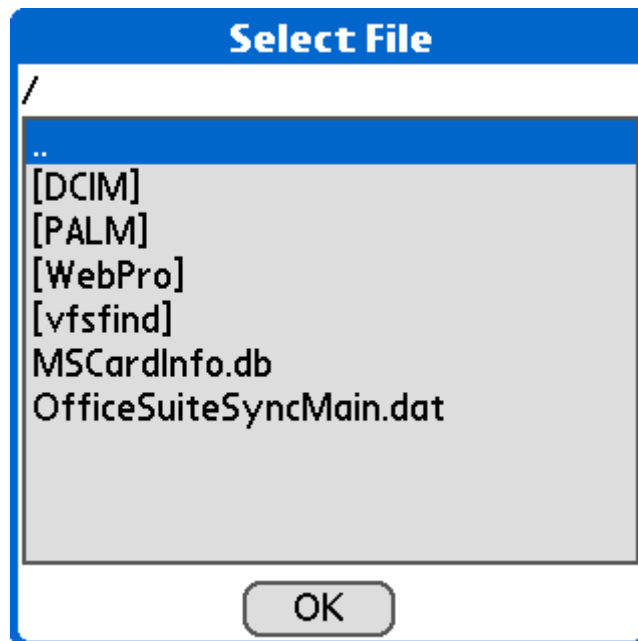
## Choosing the search folder

When searching, you need to select a folder where the search should start. Click the rectangle saying "No parent selected" or showing a path (like in the image above) to pop up a form similar to the one below:



The Select File dialog has a blue title bar with the text "Select File". Below the title bar is a blue header bar with the text "Unnamed Card". The main area of the dialog is a large, empty gray rectangle. At the bottom center of the dialog is an "OK" button.

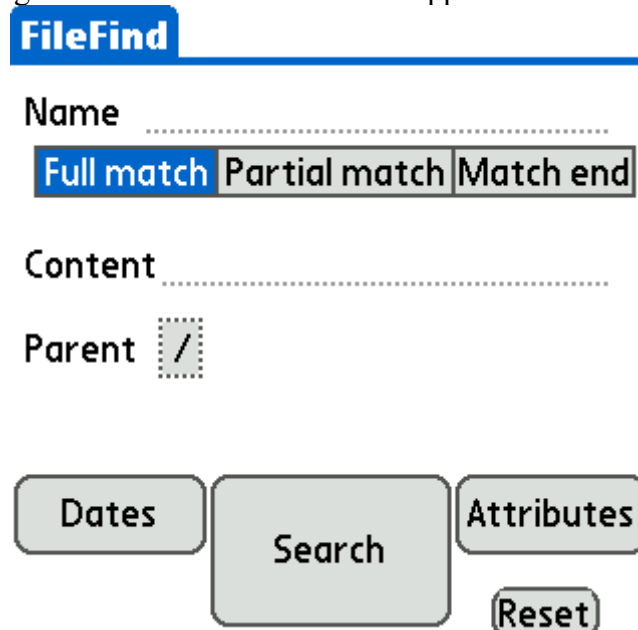
Click on the memory card you want to search. The dialog will then proceed to show all files and folders in the root directory of that memory card:



Click OK to search all files and folders that are shown in the list currently. Click on one of the directories(enclosed in []) to switch into it.

## Searching for files by name

Start FileFind. A dialog similar to the one below will appear:



Enter the text that you want to find into the name text field.

Choose Full Match to force 100% similarity. For example, if you enter c.txt, the file bc.txt won't be found.

Choose Partial Match to search for the text anywhere in the file name. For example, the filename funkyfile.fuxstinkt would match fux or ky.

Choose match end to match the last characters of the file name with the signs entered. For example, .txt would find all files ending with .txt!

Click Reset to reset all attributes to their default values!

## Searching for files by content

You can search for a file's content, too. Enter the letters you want to look for into the content field. Leave the field blank to disable content search.

## Searching for files by size

To search for files via their size, click the Attributes button in the main form. A form similar to the one shown below will pop up:

The image shows a screenshot of a software interface. At the top, there is a blue header bar with the text "FileFind" in white. Below this, a dialog box titled "File attributes" is displayed. The dialog box has a blue title bar and a white body. It contains several rows of attributes, each with three buttons: "Yes", "No", and "Don't care". The attributes are: Read-Only, Hidden, System, Archive, and Link. The "Size" attribute is different, featuring a text input field with the number "0", followed by two buttons labeled "KB" and "MB". Below the size input, there are four buttons: "Don't care", "Bigger", "Equal", and "Smaller". At the bottom of the dialog box, there are two buttons: "OK" and "Cancel".

File attributes			
Read-Only	Yes	No	Don't care
Hidden	Yes	No	Don't care
System	Yes	No	Don't care
Archive	Yes	No	Don't care
Link	Yes	No	Don't care
Size	0 ..... KB MB		
Don't care Bigger Equal Smaller			
OK		Cancel	

Enter the size in either kilobytes or megabytes into the text box. Click KB if you entered the file size in kilobytes, click MB if you entered the size in megabytes.

Choosing Equal looks for files that have exactly the size you entered. Choose smaller to find files smaller than the size you entered. Choose bigger to find files bigger than the size you entered. Choosing Don't care disables file size search!

## Searching for files by attribute

Palm OS files have a variety of attributes. To search for files via their attributes, click the Options button in the main form. A form similar to the one shown below will pop up:

**FileFind**

---

**File attributes**

Read-Only	Yes	No	Don't care
Hidden	Yes	No	Don't care
System	Yes	No	Don't care
Archive	Yes	No	Don't care
Link	Yes	No	Don't care
Size	0		KB MB
	Don't care	Bigger	Equal Smaller

OK Cancel

The top of the form contains a list of attributes. Choosing Yes means that matching files need to have this attribute. Choosing No means that files must not have this attribute. Choosing Don't care ignores this attribute when searching.

## Searching for files by date

The file system on your memory card remembers a variety of dates about your files. Click the Date button in the main form to search for files using these dates. A dialog similar to the one below will pop up:

**FileFind**

---

**Date attributes**

Creation	Choose date
Ignore	Older Younger
Modification	Choose date
Ignore	Older Younger
Access	Choose date
Ignore	Older Younger

OK Cancel

Each of the three attributes has a date selector next to it(the box saying Choose date). Click this box to open a date selector. After selecting a date, click Older to find files who are older than the entered date. Tap Younger to find files which have a date less old than the entered date.

## Searching folders

Open the Main Menu and click Tools->Folder Options to display a form similar to the one below:

FileFind

Name txt

Full match
Partial match
Match end

Contentn78

Parent /

Folder options

☒ Search subfolders
☒ Include folders into name match

OK

FileFind can traverse subfolders below the parent folder. In case you are sure that file you wish is in the parent folder, uncheck the Search Subfolders checkbox. FileFind will then ignore all subfolders of the parent, but will work significantly faster.

Folder names can be included into the name matching process if the “Include folders into name match” checkbox is checked. This means that a folder named Audio will also be returned if a name search is performed for Audio.

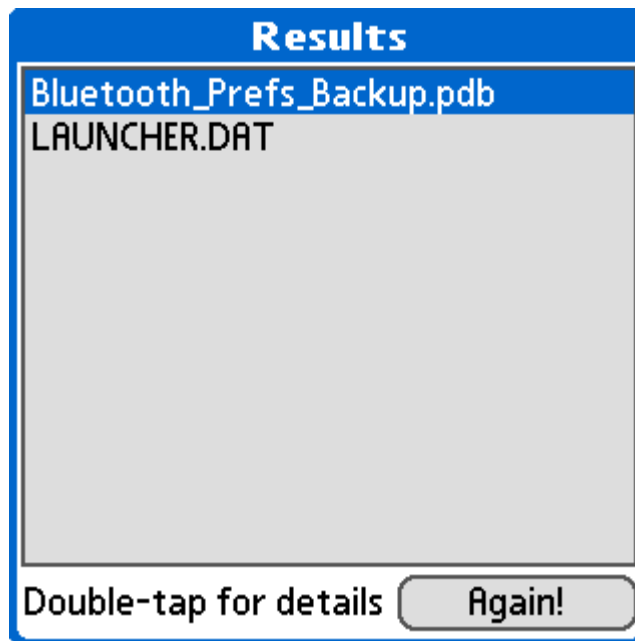
## Starting a search

Click Search to start the searching process! If the search folder hasn’t been selected yet, FileFind will ask you to choose it now.

The Search process will be interrupted by tapping the screen, pressing hardware buttons or receiving g a phone call. If the Search process has been interrupted but results have been found, FileFind will display these after a warning message!

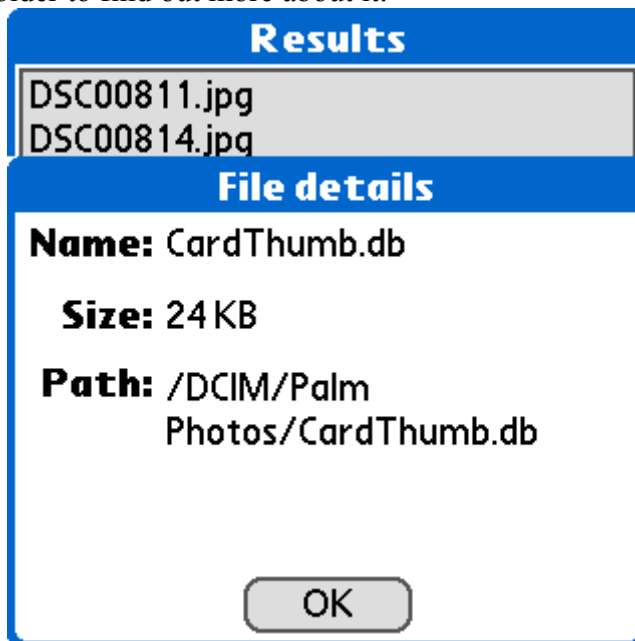
## Displaying results

After the search is complete(and files have been found), a dialog similar to the one shown below will be displayed:



You can scroll the list by clicking the arrows shown at the bottom and the top. Click on Again! to go back to the main form – your search options will be preserved! Exiting FileFind now saves the results – when FileFind starts up the next time, you can still see the results!

Double-tap a file or folder to find out more about it:



## Registering

FileFind is shareware. After the 30day evaluation period has expired, the program will cease to work on your handheld! Registering will restore it to a functioning state, and will also remove the nag alerts that are displayed when an unregistered version of the program starts up.

Open the main menu, click Options->Register and follow the on-screen instructions to purchase the program wirelessly! Alternatively, visit the place where you obtained the product in order to obtain further assistance!

Note: Since the device ID contains information about the handheld type that you use, Tamoggemon Support is needed in order to create a new unlock key if you upgrade to another type of handheld and change your Hotsync name.

## **Feedback/Support**

Do you have unanswered questions? Does FileFind miss a feature you would want to use?

Did you run into a bug maybe? Did you swap devices and need a new unlock code?

Contact Tamoggemon Tech Support with all issues at [Tamog@gmx.at](mailto:Tamog@gmx.at) and describe your needs. If you want to request a port or want to report a bug, please give as many details about your system, etc-screenshots are gladly accepted. Tamoggemon Software guaranties that all incoming emails are read and processed as appropriate.