

**MOTION  
APPS**

**mSafe v4.0.1**  
**For Windows mobile 5 Smartpone**

MotionApps  
77 Dow Place, Suite 103  
San Francisco, CA 94107, USA

[www.MotionApps.com](http://www.MotionApps.com)

# **mSafe v4.0.1**

# **User Manual**

## **for Windows Mobile 5 Smartphone**

# Disclaimer

Information in this document is subject to change without notice and does not represent a commitment on the part of MotionApps. The software and the solutions described in this document are furnished under a license agreement. It is against the law to copy or reverse engineer the software or solutions except as specifically allowed in the license agreement. No part of this manual may be reproduced or transmitted in any form or by any means, electronic or mechanical, including photocopying and recording, for any purpose without the written permission of MotionApps.

This software, all manuals as well as all solutions are copyright © 2007 MotionApps. All rights reserved. Printed in the United States of America.

Companies, names, and data used in examples herein are fictitious unless otherwise noted.

MotionApps and mSafe are trademarks of MotionApps.

All other product names are trademarks or registered trademarks of their respective holders, used only to the owner's benefit, without the intent to infringe.

**IMPORTANT - Read the full license terms and conditions below before installing. This License provides you with limited rights to use the software, conditioned upon your continued compliance with these terms and conditions. INSTALLATION OF THIS SOFTWARE WILL CONSTITUTE YOUR ACCEPTANCE OF THESE TERMS AND CONDITIONS.**

## END-USER LICENSE

Under single End-User License, you may use this program only on a single communicator, together with the related computer(s) used by you in conjunction with that communicator.

You may not use the program for any unlawful purpose, including infringement of the copyrights or other proprietary rights of others, or in any illegal manner or for creation or distribution of illegal content. You agree to indemnify MotionApps for any and all claims arising from any violation by you of the terms of this End-User License.

The following warranty and liability disclaimer apply to this product.

THIS PROGRAM IS PROVIDED "AS IS" WITHOUT WARRANTY OF ANY KIND, EITHER EXPRESS OR IMPLIED, INCLUDING BUT NOT LIMITED TO ANY IMPLIED WARRANTY OF MERCHANTABILITY, NON-INFRINGEMENT OR FITNESS FOR A PARTICULAR PURPOSE, ALL OF WHICH MOTIONAPPS SPECIFICALLY DISCLAIMS, TO THE MAXIMUM EXTENT PERMITTED BY LAW. THE ENTIRE RISK AS TO THE RESULTS AND PERFORMANCE OF THE PROGRAM IS ASSUMED BY YOU. SHOULD THE PROGRAM PROVE DEFECTIVE, YOU (AND NOT MOTIONAPPS OR ITS DISTRIBUTORS OR DEALERS) ASSUME THE ENTIRE COST OF ALL NECESSARY SERVICING, REPAIR OR CORRECTION.

NEITHER MOTIONAPPS NOR ANYONE ELSE WHO HAS BEEN INVOLVED IN THE CREATION, PRODUCTION, OR DELIVERY OF THIS PROGRAM SHALL BE LIABLE FOR ANY DIRECT, INDIRECT, CONSEQUENTIAL OR INCIDENTAL DAMAGES, LOST PROFITS, BUSINESS INTERRUPTION OR LOSS OF INFORMATION ARISING OUT OF THE USE, THE RESULTS OF USE, OR INABILITY TO USE SUCH PROGRAM, OR DAMAGE OF LOSS CAUSED BY THE PROGRAM, EVEN IF ADVISED OF THE POSSIBILITY OF SUCH DAMAGES OR CLAIM. SOME STATES DO NOT ALLOW THE EXCLUSION OR LIMITATION OF LIABILITY FOR CONSEQUENTIAL OR INCIDENTAL DAMAGES SO THE ABOVE LIMITATION MAY NOT APPLY TO YOU.

TO THE MAXIMUM EXTENT PERMITTED BY LAW, MOTIONAPPS' ENTIRE LIABILITY AND YOUR EXCLUSIVE REMEDY IN THE EVENT OF A BREACH OF MOTIONAPPS' OBLIGATIONS IS LIMITED TO A REFUND OF ANY LICENSE FEE YOU ACTUALLY PAID TO MOTIONAPPS FOR THIS PROGRAM.

# Table of Contents

Table of Contents .....	3
Introduction.....	4
Welcome.....	4
How to Reach Us .....	4
Installation.....	5
The mSafe Package.....	5
Installing Your Software .....	5
About the Evaluation Version .....	5
Activating .....	6
Using mSafe .....	7
Overview.....	7
Using mSafe.....	7
Configuring mSafe .....	8
Lock Settings.....	9
SMS Settings .....	9
Quick Lock .....	10
Frequently Asked Questions.....	11
Troubleshooting .....	12
Contacting Technical Support .....	12
Revision History .....	13
mSafe v4.0.1.....	13
mSafe v4.0.....	13

# Introduction

## Welcome

mSafe enables you to lock your smartphone device in certain situations:

- When it receives a special SMS message
- When wireless mode is disabled (i.e., the phone is turned off)
- When phone lost network coverage
- When the SD card is removed

Its main purpose is in situations when your device is lost or stolen and you want to make sure that nobody can see confidential data stored on your device.

Thank you for choosing mSafe!

## How to Reach Us

Customer satisfaction is our top priority, so if you have any questions, comments, suggestions, or requests, we would be happy to hear from you. Here's how to reach us:

**Web:** <http://www.MotionApps.com/support>

**Mail:** MotionApps  
77 Dow Place, Suite 103  
San Francisco, CA 94107, USA

# Installation

## The mSafe Package

The package should contain the following in the zip file:

- msafe\_setup.exe file
- msafe\_inst.cab file
- This Guide in PDF format

## Installing Your Software

mSafe can be installed on Windows Mobile device in several ways. Please choose one that suite you best.

- You can run the “msafe\_setup.exe” file on your desktop computer; with device connected to it through the USB cable and follow the on-screen instructions,
- You can transfer the “msafe\_inst.cab” to the device manually (via ActiveSync, Bluetooth, IR), run it on the device and follow the on-screen instructions.
- You can download the “msafe\_inst.cab” to the device OTA, run it on the device and follow the on-screen instructions

If you are unsure how to install an application on your mobile phone, please consult the manual that came with it.

**Note:** *Before installing mSafe on your device, make sure that you have deleted any previous versions of mSafe you may have.*

## About the Evaluation Version

The evaluation version of mSafe is fully functional during the 7 days trial period. When the evaluation period of 7 days expires, mSafe will stop functioning until you enter a valid registration code. The evaluation version includes the full set of features as they are available in the full version. After registration the available set of features will be given according to the registration code purchased.

## Activating

If you decide to purchase mSafe, you will need to activate it to enable all the features of the software after the trial period.

When you purchase mSafe, the activation code will be sent to you via e-mail. Please make sure that you have used the correct e-mail address during the purchase process.

To enter your activation code, run mSafe and choose the “Activate” option from the menu and an activation form will appear. Enter your activation code into the appropriate input field and follow the on-screen instructions.

If you do not have an internet connection on your mobile phone, you can activate mSafe through the connection on your desktop computer. In order to do that you need to have ActiveSync installed on your desktop computer. Connect your mobile phone to the desktop computer by USB sync cable and activate as usual.

# Using mSafe

## Overview

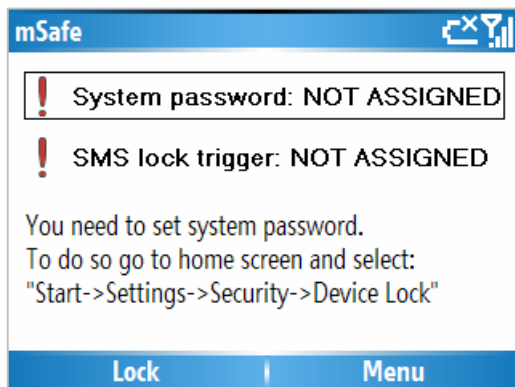
mSafe enables you to turn off and lock your Smartphone device in certain situations:

- When it receives special SMS messages
- When wireless mode is off (i.e., phone is turned off)
- When phone lost network coverage
- When SD Card is removed from the slot

With mSafe you can also completely erase the content of your device and/or SD Card when it receives the special "wipe" SMS message.

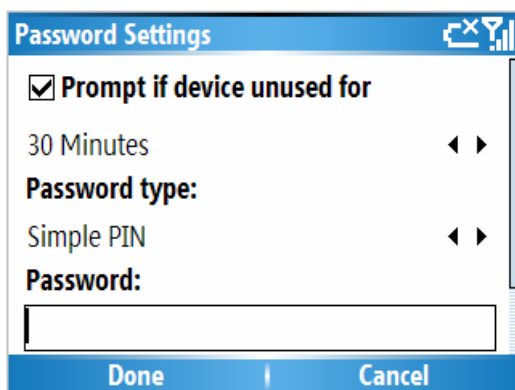
Its main purpose is in situations when your device is lost or stolen and you want to make sure that nobody can see confidential data stored on your device.

## Using mSafe

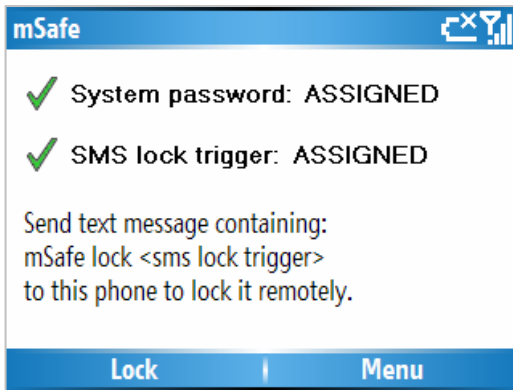


The main mSafe screen enables you to assign the unlocking (system) password, and SMS lock trigger. To lock your device by SMS you have to assign both system password and SMS lock trigger.

Lock trigger is used to lock your mobile phone by SMS. To learn how to assign SMS trigger read the "SMS Settings" paragraph on this document.



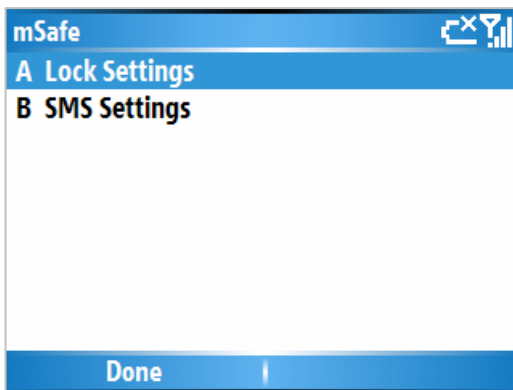
The system password is used to unlock your phone. To assign system password go to "Start->Settings->Security->Device Lock". On the Password Settings dialog define your system password and select "Done" menu key.



After configuring system password and SMS lock trigger you should see "System password: ASSIGNED" and "SMS lock trigger: ASSIGNED" on the main mSafe screen.

## Configuring mSafe

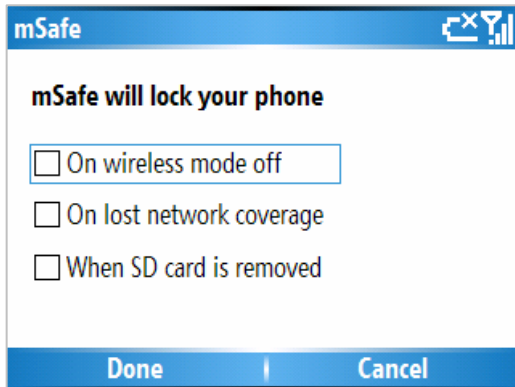
The mSafe settings form is displayed when you select the Settings option from the main menu. If you have defined the password the system will ask you to enter it before accessing the settings form.



Settings form enable select "Lock settings" and "SMS settings".



## Lock Settings



Lock settings Tab allows you to configure under which circumstances mSafe will lock your Smartphone device.

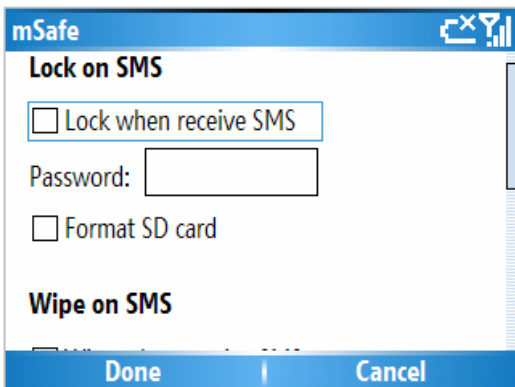
You can choose one or more options for locking your device using 3 checkboxes:

- On wireless mode off – when this option is active mSafe will lock your phone when it is turned off or when someone remove SIM card from it.
- On lost network coverage – when this option is active mSafe will lock your phone when it lost network coverage.
- When SD card is removed – when this option is active mSafe will lock your phone when someone remove SD card from it.

## SMS Settings

You can configure mSafe to take some actions when it receives the SMS message containing a special text. The SMS message text should contain at least the following line:

**mSafe lock <Lock Trigger>**



There are two passwords you can define in mSafe: locking password and wipe password. When mSafe receives the SMS with the locking password, and “Lock when receive SMS” option is checked, it will instantly lock your Smartphone device and make it unusable before entering the main system unlock password.

Also, when mSafe detects an incoming SMS message with the wipe password, it will perform hard reset which will erase all your data. Possible intruder will be able to use your device but all your confidential information will be erased.

Both for locking and wipe features you can additionally assign option to format storage card.

Once mSafe detects the lock or wipe SMS message it can inform you about the status of taken action by sending a response SMS message back to the sender of the locking or wipe request

("Reply to sender" option) or to a predefined phone number. To make mSafe respond to a predefined number, check the "Reply to" option and enter the full phone number to which you want to send the reply SMS message in the edit field next to this option.

*You should never configure the same passwords for wipe and lock requests. If you do so, mSafe will always give precedence to wipe requests.*

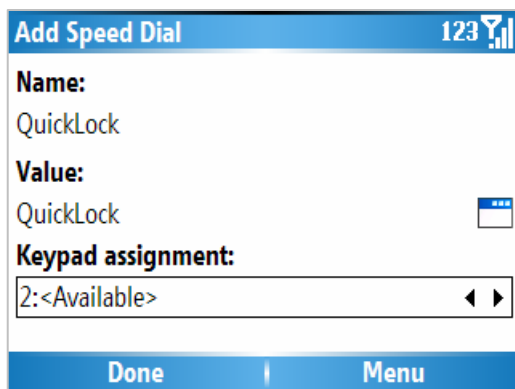
For example, if you define the lock trigger to be "**secure**" and the wipe trigger to be "**destruct**", you can:

- Lock your Smartphone device by sending an SMS message containing the text "**mSafe lock secure**" to it
- Completely erase the content of your device by sending an SMS message containing the text "**mSafe wipe destruct**" to it

*NOTE: SMS messages are not case sensitive; you can mix lower case and upper case letters.*

## Quick Lock

There is the application named QuickLock that is installed with mSafe. You can use this application to lock your phone by single key press. In order to do this you need to assign some Speed Dial key to QuickLock application.



To assign Speed Dial key to QuickLock application go to "Start->Programs", highlight the QuickLock icon, and select "Menu->Add Speed Dial". On the "Add Speed Dial" screen select the desired keypad assignment and select "Done".

After that you can press and hold selected key to quickly lock your device.

# Frequently Asked Questions

## 1. What does mSafe do?

mSafe locks or deletes your Smartphone device when it receives a special SMS message or when your phone is powered off (wireless mode is off). Also, for additional security, mSafe can be configured to lock your device after it is reset, when the SD Card is removed, or manually.

## 2. What if someone performs a hard reset?

All your data will be erased after a hard reset – so your data is safe.

## 3. How to lock my phone by SMS?

- a. Set the system password – go to “Start->Settings->Security->Device Lock” and define your system password. Main mSafe screen should show “System Password – ASSIGNED” button.
- b. Set the SMS lock trigger – on the main mSafe screen select the “SMS lock trigger – NOT ASSIGNED” button, check the “Lock on SMS” option and enter the lock trigger. Close the settings screen and mSafe main screen should show the “SMS lock trigger – ASSIGNED” button.
- c. Send the SMS to your phone – send the SMS message “mSafe lock <SMS lock trigger> (do not type ‘<’ and ‘>’ characters). When your phone receives that SMS it should lock itself. Use system password to unlock it.

## 4. How to wipe my phone by SMS?

- a. Set the wipe trigger – from the main mSafe screen select “Menu->Settings->SMS settings”, check the “Wipe on SMS” option and enter the SMS wipe trigger.
- b. Send the SMS to your phone – send the SMS message “mSafe wipe <wipe trigger> (do not type ‘<’ and ‘>’ characters). When your phone receives that SMS it should erase all data and restart itself.

# Troubleshooting

mSafe normally does not require troubleshooting.

However, if you are experiencing problems please check the mSafe FAQ list or contact MotionApps technical support.

## Contacting Technical Support

If you need to report a problem or request assistance when using this version of mSafe, please fill in the Support Request form on our Web site:

<http://www.motionapps.com/support>

To help us help you, please, be sure to include as much information, and as detailed description of your problem as possible.

# Revision History

## **mSafe v4.0.1**

- Support for Windows Mobile 6 devices.

## **mSafe v4.0**

- Initial release.