

# TealAlias User's Manual



Program Version 1.24  
Last Updated: December 23, 2008

## Table of Contents

<b>Introduction .....</b>	<b>1</b>
<i>Contents .....</i>	<i>1</i>
<i>Installing .....</i>	<i>1</i>
<b>Chapter 1 – Overview .....</b>	<b>2</b>
<i>Background .....</i>	<i>2</i>
<i>TealAlias Benefits .....</i>	<i>2</i>
<i>Using TealAlias .....</i>	<i>3</i>
<b>Chapter 2 – Main Alias Screen .....</b>	<b>4</b>
<b>Chapter 3 – Alias Edit Screen .....</b>	<b>5</b>
<i>Target application .....</i>	<i>5</i>
<i>Alias icon .....</i>	<i>6</i>
<i>Alias name .....</i>	<i>6</i>
<i>Launch mode .....</i>	<i>7</i>
<i>Data files .....</i>	<i>8</i>
<i>Copy Changes Back to Card .....</i>	<i>9</i>
<b>Appendix A – Common Questions .....</b>	<b>11</b>
<b>Appendix B – Revision History .....</b>	<b>12</b>
<b>Appendix C – Contact Info .....</b>	<b>13</b>
<b>Appendix D – Registering .....</b>	<b>13</b>
<b>Appendix E – Products .....</b>	<b>14</b>
<b>Appendix F – License Agreement .....</b>	<b>16</b>

# Introduction

## Contents

This archive contains the following files:

**Program files:**

TEALALIA.PRC	The TealAlias control program
TPSETUP.EXE	Easy installer program (Windows only)

**Document files:**

ALIADOC.PDF	This document in Adobe Acrobat (PDF) format
ALIADOC.HTM	This document in HTML format (sans images)
ALIADOC.PRC	This document in TealDoc palm format
REGISTER.HTM	TealPoint Registration form in HTML format
REGISTER.TXT	TealPoint Registration form in text format

## Installing



You'll need to install the program file **TEALALIA.PRC**. You may also wish to install the manual file **ALIADOC.PRC**, which is this document in TealDoc reader format for reading with our document reader TealDoc.

On most systems you can simply double-click on the above files to start the Palm Installer and the installation process. If this does not work, you can also start the Palm Installer manually. You can find the installer either as a stand-alone program in your Palm install folder, in the Start Menu with the other Palm programs, or in the Palm Desktop program as an icon along the left-hand side of the Palm Desktop window. Instructions on how to use the Palm installer appears in the User Handbook or documentation that came with your handheld.

On a Windows PC you can also use quick setup installer by double clicking on the **TPSETUP.EXE** installer program and following the on screen prompts to install the Palm-format files into handheld memory.

# Chapter 1 – Overview

## Background



Similar to Windows “shortcuts” or MacOS “alias” files, TealAlias **aliases** are small placeholder apps that, when run, automatically find, load, and launch specified applications and data files from memory or external flash cards.

On PalmOS handhelds, external memory cards—such as SD, Compact Flash, and Memory stick—can be used to supplement a device’s internal or “main” memory. Programs and files stored on external memory, however, cannot normally be used as a direct replacement for internal memory. Instead, programs must first be copied into main memory before they can be run, and indeed, this is what the standard system launcher does when “running” card-based applications.

Data files, on the other hand, *can* be accessed directly from external cards, but doing so can be slow, awkward, and has to be specifically supported by an application. Consequently, many apps require their data files to reside in main memory, limiting the full benefits of using external cards for memory expansion.

## TealAlias Benefits

TealAlias bypasses these limitations, allowing you to solve these problems:

### Free up memory

Aliases take up very little space, and can free up main memory by loading both apps and many data files from VFS-compatible external cards *only when needed*. Use them to add card support to applications that normally require data files to be stored in main memory.

### “Launch” and categorize apps, hacks, and preference panels

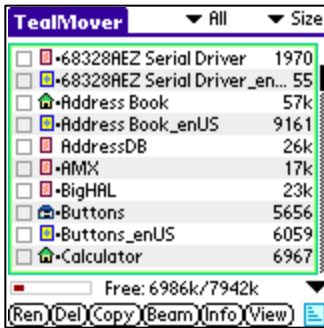
Aliases also allow hacks, preference panels, and card-based applications to be seen and categorized by application launchers, and memory-based apps to be placed in one or more launcher category.

### “Launch” data files

Lastly, aliases can be used represent specific documents and data files, commanding supporting readers, players and applications to automatically open the specified files when the alias is run (if this function is supported by the reader application).

TealAlias can even copy changed files back to the card, adding support for editable data files that would otherwise have to reside in memory. **(New in 1.20)**

## Using TealAlias



Individual alias files are created and managed by the main TealAlias program. To use TealAlias, first use a file manager application (such as TealMover) to move applications to whatever folders you desire on an external expansion card.



Then create *alias* files in memory to represent these various applications, hacks, and system panels. You can select an application to link to each alias, as well as a unique name and icon for it. You can also assign one or more data files to associate with the application, and a launch mode (open database or open record), which some applications will support to open the first linked data file.

Each alias will appear with its own icon in the system launcher and third party application launchers. When run, an alias will load the specified application and data files (if necessary) from an external card and launch the application. When the application exits back to the launcher, any changes are optionally copied back to the card and temporary files are deleted to free up memory.

## Chapter 2 – Main Alias Screen



When TealAlias is run, the **Main Alias Screen** opens, displaying the list of active alias files. To the right, information is shown about the selected alias in the list:

### *Icon*

The application launcher icon associated with the alias.

### *Application*

The name of the application, hack, or preference panel to open when the alias is launched.

### *Databases*

The number of databases associated with the alias.

### *CreatorID*

The unique 4-letter identifier PalmOS requires to be associated with each application.

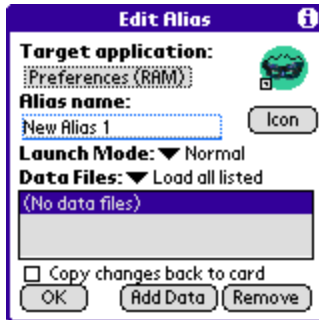
### *Mode*

The launch mode associated with this alias. Launch modes are explained in the next section of this document.

Tap the **New** button to create a new alias in memory and open it in the Edit Screen, **Edit** to edit an existing alias in the list or **Delete** to remove the alias from the list and from memory.

**NOTE:** Up to 200 aliases can be in use simultaneously, and will have default Creator IDs from "TI00" to "TI99" or "tL00" to "tL99".

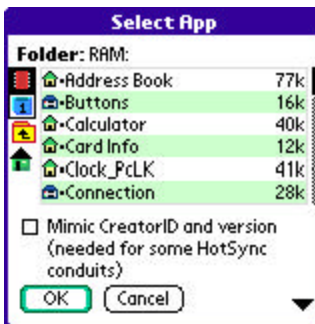
## Chapter 3 – Alias Edit Screen



The **Alias Edit Screen** allows adjustment of an alias' files, properties, and appearance.

### *Target application*

Tap on the target application selector to select or change the application, hack, or preference panel to open with the alias.



Select an application to launch from the file dialog window. If a VFS-compatible (OS4+) external memory card is present, a row of navigation icons will appear along the left side of the window, representing, from top to bottom: main memory, the external card, moving up one folder, and moving to the root (home) folder of an external card.

*Mimic Creator ID and version*

**ADVANCED FEATURE:** An additional special option appears at the bottom of the file select window meant to enable compatibility with running applications with HotSync conduits from external storage cards. Normally, the Palm Desktop will only launch a HotSync conduit if an application with a corresponding CreatorID is present in main memory. For these instances, check this option to support such a conduit with an externally-stored application. This option will not substitute for applications requiring more complex interaction with their conduits, and never set this option for apps already present in main memory. Note also that although a conduit will run, this option does not facilitate HotSyncing of any data stored on the external card if the conduit requires those files to remain in main memory.

Select an application, hack or preference panel to run with the alias.

### *Applications*

TealAlias allows applications to be stored anywhere either in memory or on an external card. Before creating an alias, use a file-moving application like **TealMover** to organize and move apps to folders anywhere on an external card.

**HINT:** The system launcher only recognizes externally-stored applications in a **Palm/Launcher** folder. If you copy applications there, they will appear in the “card” category in the standard launcher. If you move them to any other folder, they will only be accessible by any aliases you create.

### *Preference Panels*

System preference panels, such as “Buttons”, or “General”, can be launched directly from an alias. This allows quick access to a specified panel from the system launcher or pop-up launchers like **TealLaunch**. The standard system panels are stored in ROM, where they cannot be moved, and the Preference application will only find third party panels in main memory, so panels are normally stored only in main memory, though linking to third-party add-on panels stored on external cards is possible.

### *Hacks*

Aliases can be used to open a hack's configuration screen as a separate application. TealAlias **will not** “activate” a hack in the sense that it will trigger a popup window, keyboard, sound, or other special main function associated with a hack, as such functionality is hack-specific and not externally controllable. Instead, an alias can activate the hacks' configuration screen normally associated with the “+” (plus) button in TealMaster or Hackmaster. If the hack has no standard configuration panel, its “about screen” will appear instead. For reasons having to do with how they work, hacks normally need to reside in RAM.

## ***Alias icon***



Tap the “Icon” button to select and import an icon image from another application.

## ***Alias name***

The alias name will be both the filename of the alias and its name as it appears in application launchers. By default, the alias name will be set to the target application followed by an asterisk (\*).

**NOTE:** An alias should **not** be named exactly the same as a file it represents, as the system could be confused between the two programs.

## Launch mode



TealAlias supports three launch modes for applications:

### *Normal*

Use the normal launch mode for most applications, and all hacks and panels. It simulates normally running an application by selecting its icon from the application launcher, and is most compatible.

### *Open Database*

The “open database” mode uses a standard PalmOS launch code to pass the name of a specified data file to an application. This launch code is not support by all applications, but is used by most document readers, image viewers, and media players to launch automatically open a specified data file after launch. When used in TealAlias, the first data file added to the alias is passed in as the file to open.

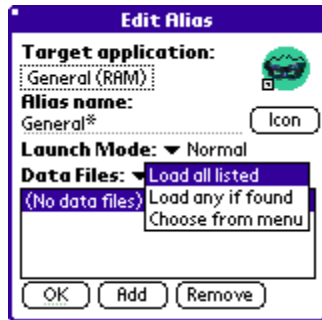
### *Goto Record*

The “goto record” launch mode can be used to fool some applications to open a specified data file if they do not support the “open database” call, but do support the PalmOS global find. It uses a mechanism normally used to open a specified document to a specific location following a global find operation. Because applications use this launch mode in different proprietary ways, however, some irregularities may still occur when using this launch code and it will not work with all applications.

**NOTE:** The Goto Record command calls an application passing it an application-specific record number, which you can specify when you select the *Goto Record* option . The meaning of this number is defined by the application. In the PIM (address, datebook, memo, etc) apps, this corresponds to the first record in the database, which is not particularly useful except perhaps in the memo application, which will cause the first memo in the global list to open if you set the record to “0”, the second memo for “1”, etc.



## Data files



Tap the **Add** button to associate specified data files to an application. If stored on external storage cards, temporary copies of these files will be made in main memory and will last while the target application is running. While adding files already stored in main memory will not cause any file copying to occur, adding them will make them available for “open database” and “goto record” launch codes.

Data files can be handled in three slightly different modes:

### *Load all listed*

In this standard mode, all listed files are loaded, and a warning message is shown if not all data files can be found.

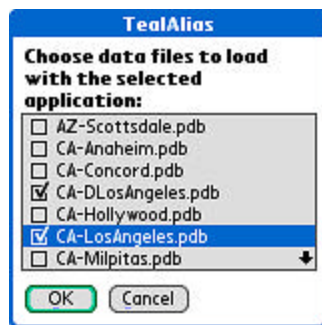
### *Load any if found*

In this mode, all files are loaded, but if any are missing, no message is given. This can be useful in creating aliases for use with multiple data cards with different sets of files.

### *Choose from menu*

In this mode, a pop up list is shown, allowing the user to select one of the listed files to load whenever the alias is run. This is particularly useful for mapping applications, movie players, or other apps requiring large sets of data files which cannot all fit in memory.

### *Choose multiple*



In this last mode, once again a pop up list is shown with the choice of listed data files, however, one or more of the files can be simultaneously selected for loading with the launched application.

## ***Copy Changes Back to Card***

When this option is selected, TealAlias will check the timestamps on any data files you have loaded from a card and will copy any changed files back to the card after you exit the application. Use this feature to alias data files that you edit or change during use. **(New in 1.20)**

**NOTE:** TealAlias will only copy files back to a card if it detects a copy of that file already on the card. This is done to prevent accidentally copying changes to a different card. In order for this to work, the file name on the card must match the imbedded Palm name inside the file. For instance, an app called "Joe's Journey" should appear on the card as "Joe\_s\_Journey.prc".

Most file managers will correctly generate a matching PRC/PDB name when copying a file from RAM, but you may run into problems if you install a PRC/PDB file direct to a card. If this happens, copy the file into RAM with a file manager and back to the card.

If you run out of space, leave the card write-protected or the copy operation fails for any other reason, your changed data files will remain in main memory, where you can manually copy them back to the card with a file manager after making more free space.

## Chapter 4 – Preferences



The preferences dialog, available from the drop down menu, offers the following special options:

### *Import icon automatically*

When this option is set, a target application's icon is automatically imported when the application is selected.

### *Remember last app*

When a new alias is created, this option causes the target application, device, and location to automatically be set to the last alias edited. This is handy when creating multiple similar aliases or aliases for files residing in the same location on an external memory card.

### *Notify third party launchers*

When an alias is created or modified, some third party launchers cache information about previous instances and may not reflect the changes immediately. This option attempts to force the launchers to refresh their icons and listings by issuing a system reset notification to whichever launcher is currently hooked up to the application home silkscreen button.

## Appendix A – Common Questions

### **What files can I safely alias?**

Most games, utilities, and productivity apps can safely be run from external cards, but programs which extend system functionality like pop-up programs, international font-replacement systems, and text-input alternates usually must reside in main memory at all times. Apps that have a PC-component may also need to stay in memory if their PC conduit looks for the application during HotSync. Aliases can be used to launch these apps with data files or place them in multiple launcher categories, but generally not to load them on-demand from external cards.

### **My alias does not support global find or other operations...**

Applications are called by the OS to be notified for a number of system events, including system reset, alarm sounding, device locking, date change, HotSync, global find, and more. TealAlias only supports basic launching operations, as loading an app for every notification would be extremely slow and potentially unstable in some instances. Thus, aliases are best used for applications with straightforward operation and no “run-in-the-background” behavior, or those already in main memory.

### **Can data files be automatically copied back to the card?**

Yes. This feature was added in TealAlias 1.20.

### **Can I place TealAlias on an external card too?**

Nope. All the aliases rely on the main TealAlias application to access VFS cards. This keeps the aliases small and easy to update in the future. In order to move TealAlias to an external card, the aliases would have to contain much more code, and would be much larger and would take much more total space in the end.

### **I can't get my hack to activate with TealAlias...**

Remember that TealAlias will only launch the configuration screen for a hack, not any special functionality the hack was designed for. The configuration screen is a standard interface between hacks that TealAlias can open, but other functionality is specific to the hack internals and not universally accessible by external programs.

### **Wordsmith stops synching when I move it to an external card...**

Wordsmith and similar programs use HotSync conduits to transfer data from the desktop, but PalmOS will not run a conduit if it does not find an application with a CreatorID matching the conduit in main memory. Try using the “mimic CreatorID” option when selecting a target application fool the conduit into thinking the alias is really Wordsmith.

## Appendix B – Revision History

Version 1.24 – December 23, 2008

- Added compatibility with Handera 330 legacy handheld

Version 1.22 – May 26, 2006

- Improved application-selection screen to show number of times each an app of a matching name has been aliased
- Improved application-selection screen to remove aliases from list
- Improved icon-selection screen to default to same folder as target app
- Fixed crash tapping in blank area below aliases in list
- Fixed error message language if TealAlias program is missing (was in German)
- Fixed extra shift indicator from appearing on top of checklist controls when selecting data files

Version 1.21 - December 29, 2005

- Fixed selection of databases when running alias with 'multiple' option selected.

Version 1.20 - November 29, 2005

- Added option to copy back changed data files from RAM to card
- Added ability to select and add multiple data files in one step
- Fixed incompatibility with z22

Version 1.17 - March 3, 2005

- Added hot-scrolling of file dialogs
- Added display of current alias name when importing icon image
- Added compatibility to checkbox controls with 'midnight' dark color themes
- Optimized 5-way controls to match new UI guidelines
- Fixed active control highlighting on Tungsten T5 in landscape mode
- Fixed 5-way control selection of menus on Tungsten T5
- Fixed custom drawing routines for Tungsten T5 left-handed landscape mode

Version 1.15 – November 16, 2004

- Increased maximum alias count from 100 to 200
- Fixed pick list selection on Tungsten T5
- Added compatibility with full screen mode on Tungsten T5

Version 1.11 – September 28, 2004

- Added ability to import icons (if present) from language overlay files
- Added support for brighter 5-way button highlights
- Added support for 5-way navigation in menus on Treo600

Version 1.10 - May 25, 2004

- Added support for selecting "multiple" data files on alias startup
- Added option to specify record number in "goto" mode launches
- Added support for Sony TH-55 full screen
- Added support pen-free 5-way navigation
- Added support for Alphasmart wide mode
- Added imbedded support for T3 landscape mode without need for patch files
- Added fix for symbol rendering on OS4-based Sony CLIEs

Version 1.06 – November 13, 2003

- Fixed crash exiting program on Sony CLIE handhelds without virtual graffiti (N, SJ Series)

Version 1.00 – June 1, 2003

- First release of TealAlias

## **Appendix C – Contact Info**

TealAlias by TealPoint Software  
©2003-2008 All Rights Reserved.

TealPoint Software  
TealAlias for PalmOS  
454 Las Gallinas Ave #318  
San Rafael, CA 94903-3618

Please visit us at [www.tealpoint.com](http://www.tealpoint.com), or email us at [support@tealpoint.com](mailto:support@tealpoint.com).

## **Appendix D – Registering**

Registering allows you to use the program past the 30 day expiration period and turns off registration reminders.

Currently, you may register by snail mail or online with a credit card and a secured server from the store where you downloaded the software. For the first option, send the following information on a sheet of paper separate from your payment.

- Product Name
- E-Mail Address
- HotSync User ID (Pilot Name Required for Passkey generation. It can be found on the main screen of the HotSync application on the Pilot as "Welcome \_\_\_\_\_" or in the corner on a PalmIII or higher)
- Check (drawn off a US Bank) or Money Order for (\$14.95 US). No international checks or money orders please.

## Appendix E – Products

Products Visit us online for our complete product line, including:

**SHORTCIRCUIT ( <http://www.tealpoint.com/softshrt.htm> )**

A new twist on gameplay fused from your all time action puzzle favorite games, connect falling conduit pieces into explosive loops in this frantic race against the clock.

**SUDOKUADDICT ( <http://www.tealpoint.com/softsudo.htm> )**

Sudoku Addict brings to your handheld the addictive worldwide puzzle craze that has displaced crossword puzzles in many newspapers in Great Britain and Japan.

**TEALAGENT ( <http://www.tealpoint.com/softagnt.htm> )**

Get news, movie times, stock quotes, driving directions, web pages and more without need for a wireless connection. TealAgent fetches and formats web-based content for offline viewing.

**TEALALIAS ( <http://www.tealpoint.com/softalia.htm> )**

Free up memory and make the most of external expansion cards. Placeholder 'Alias' shortcut files automatically find, load, and launch apps and data from external SD cards, increasing free main memory.

**TEALAUTO ( <http://www.tealpoint.com/softauto.htm> )**

Save fuel and track automobile mileage, service, and expenses with TealAuto, the complete log book for your car or any vehicle. Unmatched in features and functionality.

**TEALBACKUP ( <http://www.tealpoint.com/softback.htm> )**

Backup your valuable data with TealBackup, supporting manual and automatic backups to SD/MMC/CF cards and Memory Stick, backups through HotSync, and optional compression and encryption.

**TEALDESKTOP ( <http://www.tealpoint.com/softdesk.htm> )**

Launch applications with TealDesktop, the themed replacement for the standard system launcher screen with tabs, multiple card folders, drag and drop, and more

**TEALDIET ( <http://www.tealpoint.com/softdiet.htm> )**

Shape up your life with TealDiet, the diet, exercise, and personal tracking application for mobile devices. Lose weight, build more muscle, and live healthier with TealDiet.

**TEALDOC ( <http://www.tealpoint.com/softdoc.htm> )**

Read, edit, and browse documents, Doc files, eBooks and text files with TealDoc, the enhanced doc reader. Extensive display and customization options; TealDoc is unmatched in features and usability.

**TEALECHO ( <http://www.tealpoint.com/softecho.htm> )**

Improve your Graffiti text input speed and accuracy, seeing what you write with TealEcho digital "ink". No more writing blind!

**TEALGLANCE ( <http://www.tealpoint.com/softglnc.htm> )**

See the time, date, upcoming appointments and todo items at power-up with TealGlance. The TealGlance pop-up utility and key guard comes up when you power up, letting you see your day "at a glance."

**TEALINFO ( <http://www.tealpoint.com/softinfo.htm> )**

Lookup postal rates, area codes, tip tables, schedules, airports, and info from hundreds of free TealInfo databases. Create you own mini-apps; a handheld reference library.

**TEALLAUNCH ( <http://www.tealpoint.com/softlnch.htm> )**

Launch applications instantly with the TealLaunch pop-up launcher and button/stroke-mapping utility. Map applications to button presses and pen swipes so you can get to your apps quickly.

**TEALLOCK ( <http://www.tealpoint.com/softlock.htm> )**

Secure and protect your handheld with TealLock, the automatic locking program with encryption and card support. TealLock has unmatched features and customization options for personal or corporate use.

**TEALMAGNIFY ( <http://www.tealpoint.com/softlens.htm> )**

Save your eyesight with TealMagnify, an ever-ready magnifying glass that works with most any program. TealMagnify lets you enlarge the screen for those times the text is too small to read.

**TEALMASTER ( <http://www.tealpoint.com/softmstr.htm> )**

Replace Hackmaster with TealMaster, the supercharged 100%-compatible system extensions manager. TealMaster adds enhanced stability, configuration and diagnostic features and PalmOS 5.0 hack emulation.

**TEALMEAL ( <http://www.tealpoint.com/softmeal.htm> )**

Save and recall your favorite restaurants with TealMeal, the personal restaurant database. With TealMeal's handy sorting and selection options, never ask "where to eat" again.

**TEALMEMBRRAIN ( <http://www.tealpoint.com/softmemb.htm> )**

Stop crashes and monitor your memory use with TealMemBrain, the application stack stabilizer. TealMemBrain boosts your stack space on OS3 and OS4 handhelds, eliminating causes of system instability.

**TEALMOVER ( <http://www.tealpoint.com/softmovr.htm> )**

Beam, delete, rename, and copy files with TealMover, the file management utility for SD/CF/MS cards. TealMover lets you see, move, modify, hex edit, and delete individual files.

**TEALMOVIE ( <http://www.tealpoint.com/softmovi.htm> )**

Play and convert high-quality video and synchronized sound with the TealMovie multimedia system. TealMovie includes a handheld audio/movie player and a Windows AVI/MPEG/Quicktime converter program.

**TEALNOTES ( <http://www.tealpoint.com/softnote.htm> )**

Insert freehand graphics anywhere with TealNotes "sticky notes" for Palm OS. TealNotes can be inserted into memos, to-do lists, address book entries--almost anywhere you currently have editable text.

**TEALPAINT ( <http://www.tealpoint.com/softpnt.htm> )**

Paint, sketch, or draw with TealPaint, the all-in-one mobile graphics paint program and photo editor. Highlights include 25 tools, 32 patterns, 49 brushes, zoom, layers, undo, & JPEG/GIF/BMP support.

**TEALPHONE ( <http://www.tealpoint.com/softphon.htm> )**

Supercharge the address book with TealPhone, the contacts replacement with superior interface and options. Highlights include enhanced display, search, phone-dialing, groups, and linking.



**TEALPRINT ( <http://www.tealpoint.com/softprnt.htm> )**

Print text and graphics to IR, serial, and Windows printers with TealPrint. With numerous connection options, TealPrint, is the all-in-one text and graphic printing solution.

**TEALSAFE ( <http://www.tealpoint.com/softsafe.htm> )**

Store your passwords, credit cards, PIN numbers, and bank accounts in the TealSafe data wallet. With maximum security and encryption, TealSafe is a must for features and security.

**TEALSCAN ( <http://www.tealpoint.com/softscan.htm> )**

Keep your PDA or Smartphone healthy, clean, and fast with TealScan, the system maintenance utility. Use TealScan to fix crashes, find updates, and keep your device running smoothly and efficiently.

**TEALSCRIPT ( <http://www.tealpoint.com/softscrp.htm> )**

TealScript adds Graffiti text input to Treo and Centro smart phones. For devices that already support Graffiti, TealScript adds a trainable system that supports both multi-stroke and Graffiti-1.

**TEALTRACKER ( <http://www.tealpoint.com/softtrac.htm> )**

Track time and expenses with a fast, easy to use interface that requires minimal effort. Generate reports and export data to a spreadsheet. TealTracker is your personal time clock.

**TEALTOOLS ( <http://www.tealpoint.com/softtool.htm> )**

Improve productivity with TealTools pop-up Palm Desk Accessories. TealTools includes a popup calculator, clock/stopwatch, preferences panel, editing panel, memopad, and a file/backup manager.

**VERSIONMASTER ( <http://www.tealpoint.com/softvers.htm> )**

Automatically finds, downloads, and installs updates for your TealPoint apps

## **Appendix F – License Agreement**

We at TealPoint Software are committed to providing quality, easy-to-use software. However, this product is provided without warranty and by using the software, the user accepts the terms and conditions of the Customer License Agreement below.

This archive is freely redistributable, provided it is made available only in its complete, unmodified form with no additional files and for noncommercial purposes only. Any other use must have prior written authorization from TealPoint Software.

Unauthorized commercial use includes, but is not limited to:

- A product for sale.
- Accompanying a product for sale.
- Accompanying a magazine, book or other publication for sale.
- Distribution with "Media", "Copying" or other incidental costs.
- Available for download with access or download fees.

This program may be used on a trial basis for 30 days. The program will continue to function afterwards. However, if after this time you wish to continue using it, please register with us for the nominal fee listed in the program.

**CUSTOMER LICENSE AGREEMENT**

YOU ARE ABOUT TO DOWNLOAD, INSTALL, OPEN OR USE PROPRIETARY SOFTWARE OWNED BY TEALPOINT SOFTWARE, INC. CAREFULLY READ THE TERMS AND CONDITIONS OF THIS END USER LICENSE BEFORE DOING SO, AND CLICK BELOW THAT YOU ACCEPT THESE TERMS.

1. License. You are authorized to use the Software Product owned and developed by TealPoint Software, Inc. on a single hand-held computing device on a trial basis for thirty (30) days. If after 30 days you wish to continue using it, you are required to register with TealPoint and pay the specified fee. This license is not exclusive and may not be transferred. You may make one copy of the Software for back-up and archival purposes only.
2. Ownership. You acknowledge that the Software Product is the exclusive property of TealPoint Software, Inc, which owns all copyright, trade secret, patent and other proprietary rights in the Software Product.
3. Restrictions. You may NOT: (a) decompile or reverse engineer the Software Product; (b) copy (except as provided in 1 above) sell, distribute or commercially exploit the Software product; or (c) transfer, assign or sublicense this license.
4. Disclaimer of Warranty and Liability. TEALPOINT MAKES NO WARRANTY, EXPRESS OR IMPLIED, AS TO THE ACCURACY, COMPLETENESS OR FUNCTIONING OF THE LICENSED SOFTWARE, INCLUDING WITHOUT LIMITATION, WARRANTIES OF MERCHANTABILITY OR OF FITNESS FOR A PARTICULAR PURPOSE, ALL OF WHICH TEALPOINT DISCLAIMS. ALL LIABILITY IS DISCLAIMED AND TEALPOINT ASSUMES NO RESPONSIBILITY OR LIABILITY FOR LOSS OR DAMAGES OF ANY KIND, DIRECT OR INDIRECT, INCIDENTAL, CONSEQUENTIAL OR SPECIAL, ARISING OUT OF YOUR USE OF THE LICENSED SOFTWARE, EVEN IF ADVISED OF THE POSSIBILITY THEREOF.
5. Termination. You may terminate this Agreement at any time by destroying your copy(ies) of the Software Product. The Agreement will also terminate if you do not comply with any of its terms and conditions, at which time you are required to destroy your copy(ies) of the Software Product and cease all use.
6. Applicable Law. This Agreement is governed by the laws of the State of California.