

NetSelect

Version 2.2

Do you use multiple ISPs with your Palm? Tired from switching between these? NetSelect offers a simply method to switch between network entries. Or control which entry is active at the moment...

Requirements

PalmOS 3.3, 3.5, 4.x, 5.x

Installation

On PalmOS 3 and PalmOS 4, you can decide between the hack version netselect-hack.prc which requires X-Master (recommended) or netselect.prc (does not require additional software). Please refer to <http://www.dseifert.com/hacks> for a discussion about hacks.

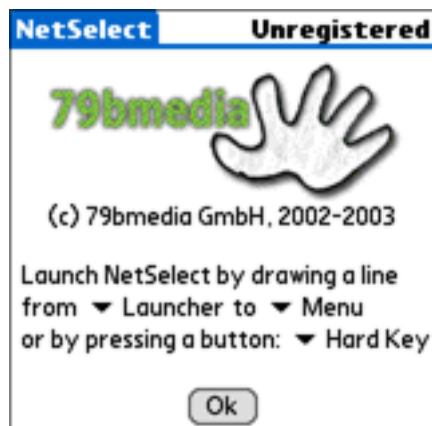
If you are using PalmOS 5, please install netselect.prc

Configuration

1. Open your hack-manager and tap on „Configure“ or run NetSelect and choose „Settings“:



2. Configure a stroke or a button to launch NetSelect.



How to use

1. Launch NetSelect with your configured stroke or button from any application
2. NetSelect shows the current default network entry.



3. Now you can use NetSelect in different ways:
 - Set another network entry as default: Select the network entry and tap on „Done“.
 - Tap »Connect« to connect using the selected entry.
 - If you are currently online, you can use NetSelect to disconnect by tapping on »Disconnect«.
 - Tap on „Prefs“ if you want to configure this network entry (required when switching to WiFi profiles!)

Attention

It is important you have valid entries on your Palm. Each network entry belongs to a connection entry. These settings have to be correct.

Please note that switching to Wireless LAN profiles can only be done from within the Preference application, as these are system internal profiles that can not be switched to from other applications. Use the „Prefs“ button in NetSelect to launch Prefs. Tapping on „Done“ in Prefs will return you to the application active before.

Support

If you have trouble please contact support@79bmedia.com.

How to register

NetSelect is shareware. You can use the unregistered version for two weeks without any restrictions. If you want to continue NetSelect after the second week, please refer to

register.html

from within the netselect.zip file for further information.



79bmedia GmbH
Chauseestr. 1
10115 Berlin
Germany
www.79bmedia.de