

# GemPower

Version 1.5



## What is GemPower?

GemPower is an application to help you manage your gem collection.

You can enter name and color of a gem, the disease it can cure, which Chakra to use on and many more information.

## Requirements

- Palm OS 3.5 or better
  - at least 120 kB free memory
  - Advanced Library (sorting, messages)
  - Database Extreme Library (extended database functions)
- The libraries are provided by the installer.

PalmSource, Inc. PalmSource, Palm OS, Palm Powered, Graffiti, HotSync and certain other trademarks and logos appearing herein, are trademarks or registered trademarks of PalmSource, Inc. or its affiliate in the United States, France, Germany, Japan, the United Kingdom, and other countries.

These marks may not be used in connection with any product or service that does not belong to PalmSource, Inc., in any manner that is likely to cause confusion among customers, or in any manner that disparages or discredits PalmSource, Inc., its licensor, its subsidiaries or affiliates. While all content is believed to be correct at the time of publication, it is provided solely for general-purpose information. The content, including without limitation, descriptions of third party products, features, functions or specifications, is supplied "As-Is" and with no express or implied warranties whatsoever made by PalmSource, Inc. or its third party suppliers or licensees, including but not limited to warranty for accuracy, merchantability, fitness for purpose or titles.

All other brands and trademarks used herein are or may be trademarks of, and are used to identify other products or services of, their respective owners. All rights reserved.

## What's new?

- Note screen changed
- "!" on records that have a note attached
- Lists use the Virtual Graffiti area
- Layout changes
- Libraries enhanced

## What's installed?

Filename	Function
GemPower	the application
GemList	your gems
GemFilter	stores data for list view (not editable by the user)

Additional libraries	Function
PDATAAdvUtilsLib	Sorting, messages
PDATDBXLibRT	Extended database functions

You can move the libraries to flash memory, but before the next update you have to move them back to normal memory. There may be newer version shipped then, which require to overwrite those you have installed.

If you move the libraries to external cards, GemPower won't work correct any more!

## Register

**\* Not registered \***

To register this app, please go to [www.palmgear.com/register](http://www.palmgear.com/register) and enter the Product ID 49690. The price for one license is \$US 3.50.

Please enter your device name on the order form. Tap on "Enter registration code" to see it (it's case sensitive!).

**\* Not registered \***

**Registration worldwide:**  
[www.palmgear.com/register](http://www.palmgear.com/register)  
Product ID is 49690 (US\$ 4.00)

**Registration**

**Enter your registration code exactly as provided:**

Name:

Code:

As long as GemPower is not registered, this screen will appear first when starting the app. Tap on "Continue" to evaluate longer or on "Enter registration code" to enter your personal registration code.

**Please note!** Name and Code are case sensitive, so "MartinL" and "martinl" are two different names.

## Main



After launching the application you'll always get to the main screen. There are buttons which give you access to the functions of GemPower:

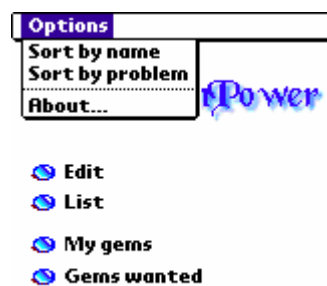
*Edit* - enter new gems

*List* - opens the lists of all gems

*My gems* - opens the list of your gems

*Gems wanted* - opens the list of gems you want

Some basic settings can be made through the menu or using the command stroke:



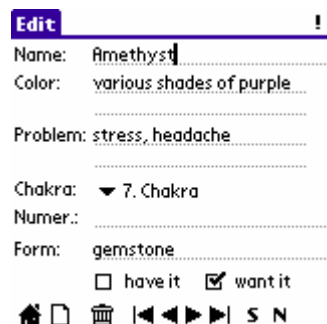
*Sort by name* - sorts the records by name

*Sort by problem* - sorts the records by problem

*About...* - version und contact info

**Note:** depending on the size of your gem collection, sorting may take several seconds. There is no progress bar, but a message will inform you when sorting is done.

## Edit

**CHANGED**

**Edit** !

Name: Amethyst

Color: various shades of purple

Problem: stress, headache

Chakra: ▼ 7. Chakra

Numer.:

Form: gemstone

☐ have it ☒ want it

🏠 📄 🗑️ ⏪ ⏩ ⏴ ⏵ S N

This is where you enter data for a new gem or edit existing ones.

The database is sorted by the **Name** field.

**Note:** Please keep in mind, that sorting is case sensitive and a blank as first character is also valid. So "Gem", "gem" and " gem" are three different names!

For **Color** and **Problem** (or disease that gem helps), you see two lines, but you can write as much as you want. When you reach the end of the second line, a scrollbar pops up automatically.

**Chakra** is a popup list which can't be edited, **Numer.** is a field to add the numerology and **Form** is for the forms you can get this gem in.

The checkboxes show if you have or want the gem.

If you added a note to a record (see below), a "!" is shown in the upper right corner of the screen.

The icons on the bottom of the screen mean (from left to right):

- Goto "Main" screen
- New record
- Delete current record
- Goto first record
- Goto previous record
- Goto next record
- Goto last record
- S - opens the "Science info" screen (see below)
- N - opens the "Note" screen (see below)

You can call more database functions from the menu or with the command stroke:

Edit	Record	Goto
Name:	New	✓N
Color:	Delete	✓L
	Duplicate	✓I
	Beam	✓B
Problem: stress, headache		
Chakra: ▼ 7. Chakra		
Numer.:		
Form: gemstone		
<input type="checkbox"/> have it <input checked="" type="checkbox"/> want it		

*New* - create new record

*Delete* - delete current record

*Duplicate* - duplicate the current record. This helps if you have to enter many books which have similar data (like author's name) and works for all fields of the record.

*Beam* - beams the current record to another Palm user. Please keep in mind, that the other person has to have GemPower installed too.

Edit	Record	Goto
Name:	My gems	✓M
Color:	Gems wanted	✓W
	List of gems	✓F
Problem: stress, headache		
Chakra: ▼ 7. Chakra		
Numer.:		
Form: gemstone		
<input type="checkbox"/> have it <input checked="" type="checkbox"/> want it		

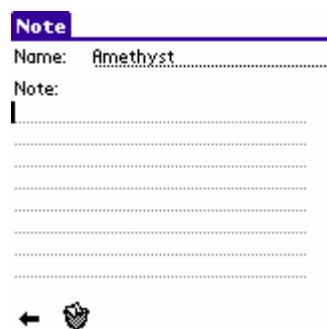
*My gems* - opens the list of your gems

*Gems wanted* - opens the list of gems you want

*List of gems* - list of all gems stored

**NEW**

## Note

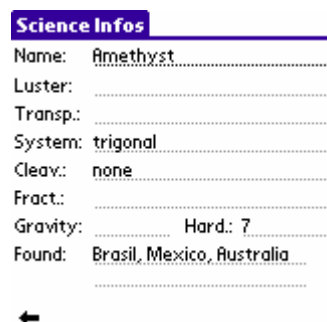
**CHANGED**

The **Name** field is Read Only, to show you which record you're working on. In the **Note** field you can enter as much as 2040 characters. A scrollbar is shown as soon as you reach the end of the last line.

The icons at the bottom mean:

- goto "Edit" screen (and show exclamation mark if **Note** field has data)
- clear **Note** field

## Science infos



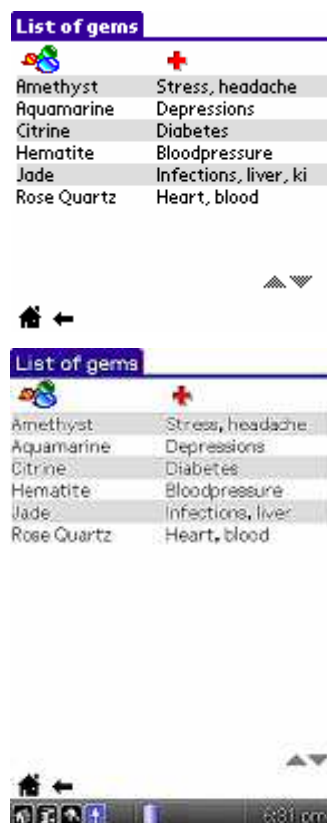
The **Name** field is Read Only to show which gem you're working on.

**Found** is a large field where you can enter as much data as you want. When you reach the end of the second line, a scrollbar pops up automatically to let you scroll easier through your text.

All other fields are only one line long.

To get back to the "Edit" screen tap on the arrow at the bottom.

## List of gems



Due to the small screen of the device, the list view shows only a part of the data you've entered.

You get to this list from the main application screen or the menu of the "Edit" screen.

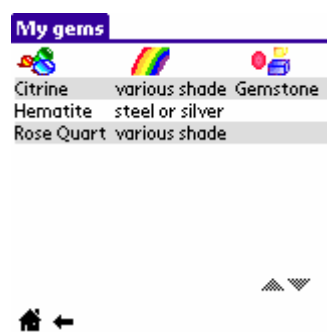
To edit a record just tap on it and it is opened on the "Edit" screen.

If your device has a Virtual Graffiti area, this screen uses it automatically to show more records.

The two icons at the bottom mean:

- goto "Main" screen (house)
- goto "Edit" screen (arrow)

## My gems



This screen lists records which have a checkmark at "have it" (see Edit screen, page 4).

Each line shows the name, color and form of the gem. To edit a record just tap on it and it is opened on the "Edit" screen.

If your device has a Virtual Graffiti area, this screen uses it automatically to show more records.

To go back to the Start screen, tap on the house icon, or tap on the arrow to get back to the Edit screen.

## Gems wanted



This screen lists records which have a checkmark at "want it" (see Edit screen, page 4).

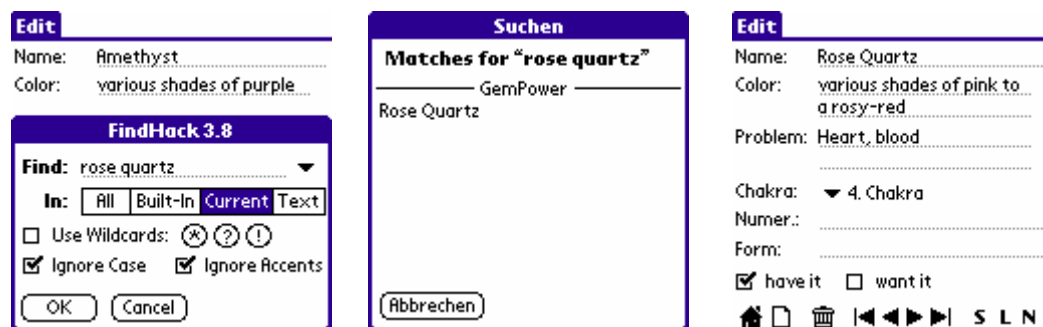
Each line shows the name, color and form of the gem. To edit a record just tap on it and it is opened on the "Edit" screen.

If your device has a Virtual Graffiti area, this screen uses it automatically to show more records.

To go back to the Start screen, tap on the house icon, or tap on the arrow to get back to the Edit screen.

## Find function

This is provided by the development IDE and works a bit unusual:



To search GemPower's database you have to open the "Edit" screen, tap on the silkscreen find button (bottom right next to the Graffiti area), enter the search phrase (this is not case sensitive) and then tap ok.

The result screen will show the **first** matching record. Tap on that line and the record is opened on the Edit screen.

If you get a "No openDB 0 0" error you didn't start on an edit screen.

As the screenshots show, this function works with FindHack too.



## Known bugs and limitations

- the installer may leave a "Temp Install Data" file on your device. It's save to delete this file.

## Credits

A very big thank you to Donna Rose for sharing the idea and beta testing.

Thanks go also to the folks of the PDAToolbox Forum ([www.pdatnutsandbolts.com/forums](http://www.pdatnutsandbolts.com/forums))

GemPower is created using

- PDAToolbox ([www.pdatoolbox.com](http://www.pdatoolbox.com))
- PDAT/Adv and PDAT/Adv libraries by Rick Sands ([www.sandsusa.com](http://www.sandsusa.com))
- Icons by LiquidPalm ([www.liquidpalm.com](http://www.liquidpalm.com)) and Icon Land
- Nutshell by Ecomm Network
- BlackChancery font

## Contact

Email: [support@mlindert.de](mailto:support@mlindert.de)

Web: [www.mlindert.de](http://www.mlindert.de)

## Disclaimer / Licence / Warranty

The software and related documentation are provided "AS IS" and without warranty of any kind and the author expressly disclaims all other warranties, express or implied, including, but not limited to, the implied warranties of merchantability and fitness for a particular purpose.

The software is protected by copyright laws and international copyright treaties, as well as other intellectual property laws and treaties. You may only use the software on one device. The software is licensed, not sold.

You may not reverse engineer, decompile, or disassemble this software.

By installing and opening the software you are agreeing to the terms set by this license. If you do not agree to this license do not use this software.

## Notes

### **SD card or Memory Sticks:**

although it's possible to move GemPower to external memory, the databases have to stay in internal memory.

### **General:**

FindHack (shareware) is an enhancement of the build in find function and can be found at <http://fpillet.free.fr> or <http://perso.wanadoo.fr/fpillet/>

## Version history

### 1.5 - 02/10/2005

- Note screen changed
- "!" on records that have a note attached
- Lists use the Virtual Graffiti area
- Layout changes
- Libraries enhanced

### 1.1 - 08/30/2003

- Hi-Res icon
- List for "My gems" and "Gems wanted"
- Changed row color in lists
- Internal changes
- Layout changes
- Libraries enhanced

### 1.0 - 05/30/2003 (first version)