

---

Welcome to EasyTalk for PalmOS

---

## **PACKAGE INFORMATION**

The following files are included in EasyTalk.zip/ EasyTalk\_demo.zip:

- User Guide (this file in html and pdf format)
- EasyTalk.prc/ EasyTalk\_demo.prc (EasyTalk program file)
- EnglishDB.pdb (English language database)
- FrenchDB.pdb (French language database)
- GermanDB.pdb (German language database)
- ItalianDB.pdb (Italian language database)
- PolishDB.pdb (Polish language database)
- SpanishDB.pdb (Spanish language database)

---

## **SYSTEM REQUIREMENTS**

You will need a device running Palm OS version 3.0 or higher to be able to use the program. The following devices (by manufacturers) can be used to run the program:

- Palm
- Sony
- Handspring
- Kyocera
- Samsung
- IBM
- Handera
- other devices

---

## **PROGRAM OVERVIEW**

EasyTalk is an excellent two-way translator/ travel phrasebook. The program is useful during trips and voyages abroad, on the vacation and in the process of learning of foreign language. Perfectly replaces traditional phrasebook or mini dictionary. EasyTalk gives you the resources you need to learn faster and to maintain your vocabulary in any of the six languages: English, French, Spanish, German, Italian, Polish (all 6 languages included in the package!).

Full version of the program consists of over 12000 expressions and phrases from all areas of the day life, organized into ten intuitive categories (such as Accommodation, Traveling, Shopping, Health Care, etc).

The User can set any language (out of 6 available languages) as menu language and independently choose any combination of languages for translation, e.g. menu language: English and translation from French to Spanish.

In the latest release of the program (v1.55) you will find all those useful features which other similar programs are missing:

- possibility to save translated words to Memo

- search option (two modes to choose from: 'string mode' and 'word mode')
- possibility to change menu language at any time (6 languages available and more to come)
- extensive vocabulary
- possibility to edit language databases
- possibility to add own words

---

## INSTALLATION

Double click on EasyTalk.prc (or EasyTalk\_demo.prc) file and on each database file (.pdb) to install EasyTalk to your handheld. After doing the HotSync operation the program is ready to be used (the program can be installed by using the Palm Desktop software or any other similar application).

The language databases must be installed in device internal memory (RAM) - otherwise the program will not be able to find them. The program itself (EasyTalk.prc or EasyTalk\_demo.prc file)

can be installed on the expansion memory card (MMC/SD/MemoryStick).

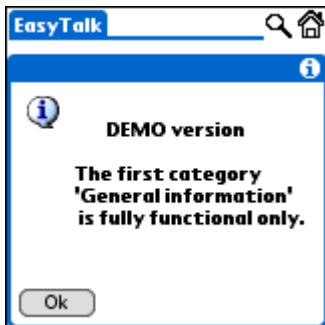
It is not necessary to install all 6 language databases for the program to work - it is enough to install 2 language databases and add other databases when necessary.

It is recommended that you have at least 0.6MB (600kb) of free space on your device in order to install the program with all 6 language databases (to check the available memory, being in the launcher select from menu: Apps -> Info and choose handheld or expansion memory card as Device. Available memory will be specified next to line: Free Space).

---

## DEMO VERSION

The demo version of EasyTalk enables the User to access the first category only (General information). The remaining categories can be accessed after registering of the program (all other options are available and fully functional in demo version). When other than first category is selected, the demo notification screen is displayed.




---

## MENU

The menu of EasyTalk consists of three main parts: Options, Utilities and Edit. The following sub-menus are available in each part of menu:

## Options

*Preferences* - opens preferences screen

*Registration* - opens registration screen

*About* - opens information screen about the program

## Utilities

*My dictionary* - opens the program with dictionary created by User

*Save as new Memo* - saves selected word to Memo

*Append to last memo* - appends selected word to last Memo (created earlier with option "Save as new Memo")

*Find again* - opens the search screen

*New entry* - opens the screen for adding a new entry in User's dictionary

*Delete entry* - deletes the selected entry from User's dictionary

*Edit entry* - opens the screen for editing of the selected entry

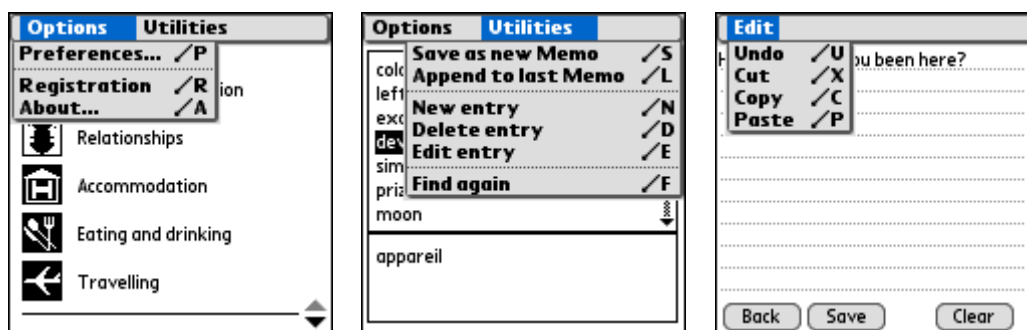
## Edit

*Undo* - undo last edit operation

*Cut* - cut selected string

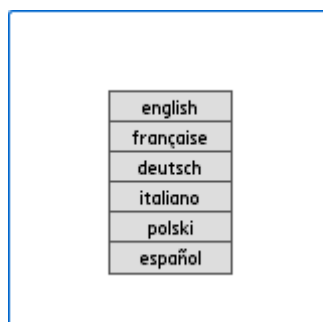
*Copy* - copy selected string to internal memory

*Paste* - paste string from internal memory



## LANGUAGE SELECTION

When the program is started for the first time the User can select the language to communicate with the program (it is possible to change the language afterwards).



## PREFERENCES

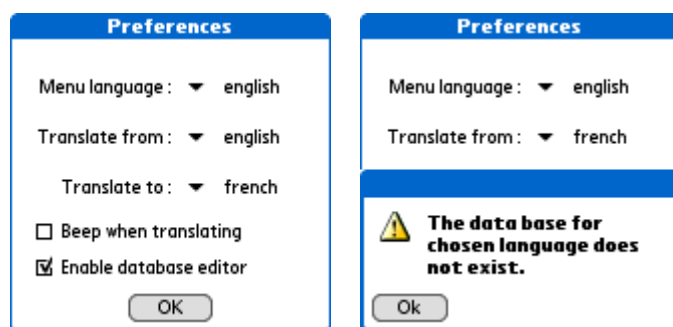
In the Preferences (accessible from the menu) the User can:

- 1) select menu language to communicate with the program
- 2) select languages for translation (translate from and translate to). If selected language database is not present in the device internal memory (RAM), the following notification screen is

displayed: 'The database for chosen language does not exist'. In such a case you will need to install the missing language database into internal memory (RAM) of the device.

- 3) enable/ disable sound notification ('beep' is heard after the word for translation is selected)
- 4) enable/ disable possibility to edit words in language databases (refer to 'Editor' chapter for details)

All the settings remain on the exit of the program as well as after soft reset.



## MAIN SCREEN

In the main screen the User can choose category which the word to be translated belongs to. All words are organized into ten intuitive categories, such as:

- *General information*
- *Relationships*
- *Accommodation*
- *Eating and drinking*
- *Traveling*
- *Tourism, recreation*
- *Free time, sport*
- *Shopping*
- *Health Care*
- *Useful terms*

A category can be chosen by taping the icon/ name of the category. To switch between screens where categories are listed use scroll-up/ scroll-down icons in the lower right corner of the screen or use page-up/ page-down hardware buttons.



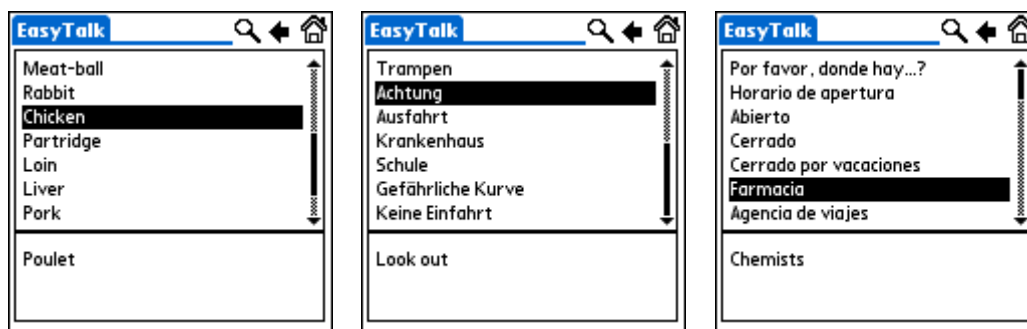
## SUB-CATEGORIES SCREEN

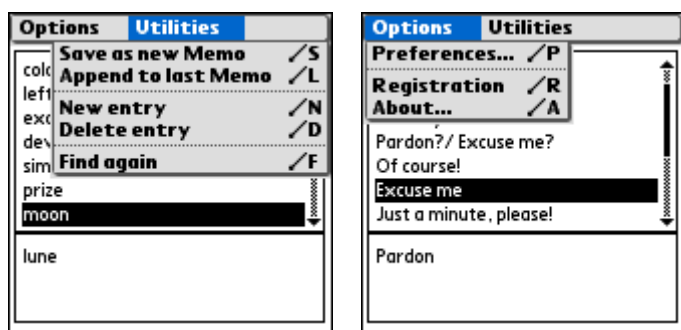
After choosing a category in Main Screen (e.g. General information), the program goes to sub-categories screen, where further selection is done basing on more detailed listing of the category.



## DICTIONARY SCREEN

When sub-category is selected, the program goes to dictionary screen, where all words and phrases belonging to chosen category/ sub-category are displayed. To have a word translated, tap on it and the translation will be displayed in lower part of the screen. If sound notification was enabled, after a word for translation is selected, a 'beep' will be heard.





When the sentence selected for translation is too long to be displayed in one line on the screen, it is split and the icon: ...» is displayed on the very right side of the screen. When this icon is tapped, the text is scrolled forward (to scroll the text backward, tap the icon: «... displayed on the very left side of the screen).



## MY DICTIONARY

In My Dictionary screen (accessible from the menu) all words and phrases added by an User are displayed. To have a word translated, tap on it and the translation will be displayed in lower part of the screen. If sound notification was enabled, after a word for translation is selected, a 'beep' will be heard.



## EDITOR

To edit an entry, tap it and hold the stylus down for at least half a second. If editing was enabled in Preferences, the program will go to Editor screen. Editor can also be started by choosing 'Edit' from the menu.



## SEARCH

To search for a string, tap the loupe icon (right upper corner of the screen). The window where you can specify the search criteria (what to search for and in which language database) will pop-up (if you are in My Dictionary screen (dictionary created by an User) and if there are no entries added yet, the loupe icon will be disabled. After the first entry is added, the loupe icon will become enabled). Searching can be performed in two modes: 'string mode' (search for a string) and 'word mode' (search for a word). To distinguish between both modes the checkbox named: 'word' should be used. If the checkbox is selected then 'word mode' will be used.

When the OK button is pressed, the chosen language database is searched for the specified string/ word. When the first match is found, the program displays the result in Dictionary screen. To continue search for the same string open the menu and choose: 'Find again'.

Example:

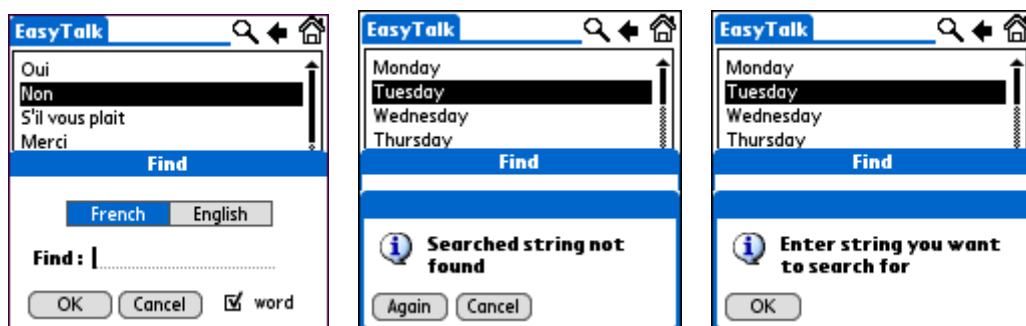
string/ word to be found: 'day'

Result:

- checkbox not selected ('string mode' chosen): 'day' or 'monday' or 'Monday' or 'Tuesday' or 'holiday' or 'Day' , etc.
- checkbox selected ('word mode' chosen): 'day' or 'Day' or 'DAY' , etc.

If the string/ word is not found the message: 'Searched string not found' is displayed. If OK button is pressed but no string is entered, the message: 'Specify a string you want to search for' is displayed.

The search function is not case sensitive (it does not matter whether the User specifies 'Monday' or 'monday' as string to search for).

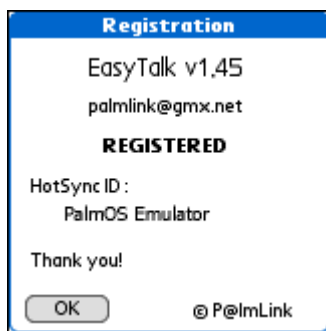


## REGISTERING OF THE PROGRAM/ ENTERING REGISTRATION CODE

EasyTalk can be registered by entering the registration code in Registration screen. The Registration screen is displayed when the full version of the program is started for the first time.



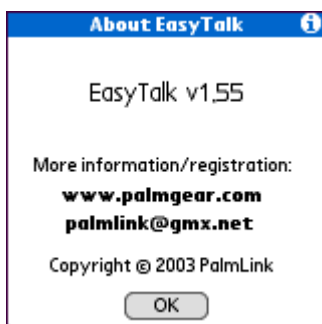
Once the program is registered, the slogan: REGISTERED is printed in Registration screen (accessible from the menu).




---

## ABOUT

The information concerning the program can be seen in About screen (accessible from the menu).




---

## HOW TO REGISTER

EasyTalk is a shareware. To be able to use full version of EasyTalk a registration code must be entered. To obtain the registration code you need to buy the program. The program is available in real-time fulfillment (registration code is generated on-line via the

website during ordering of the program).

To buy the program please go to: <http://www.palmgear.com/> or contact us at: [palmlink@gmx.net](mailto:palmlink@gmx.net)

In case the program is updated, all registered Users can download the updated version for **FREE** directly from the website where the program was ordered (do not use the public version of the program available for downloading, you can download the full version of EasyTalk after logging into your account on the website where you ordered the program).

#### IMPORTANT:

It is important that correct HotSync ID is specified during ordering of the program (the HotSyncID given by an User is case sensitive and is used to generate the registration code). To check what is your correct HotSyncID please start EasyTalk, open the menu of the program, choose Registration and check what is printed in Registration window under the line: HotSyncID.




---

## IN NEXT RELEASES OF THE PROGRAM

In next release of the program it is planned to:

- add colours to the program
- add new language databases (swedish, norwegian, finnish, dutch, hungarian, czech)

NOTE: In case the program is updated/ extended with new language databases, all registered Users can download the updated version for **FREE** directly from the website where the program was ordered.

---

## HISTORY INFORMATION

EasyTalk v1.55 (2004-09-13)

- search function modified to be not case sensitive
- 'string mode' or 'word mode' possible to choose in search function
- other minor improvements/ changes

EasyTalk v1.45 (2004-08-19)

- possibility to edit language databases
- possibility to add own words to the dictionary
- preferences screen improvements (real-time menu language adjustment)

- improvements in the way long sentences for translation are displayed
- possibility to view sentences longer than three lines added
- search window modified
- other minor improvements/ changes

#### EasyTalk v1.35 (2004-07-11)

- possibility to save translated words to Memo
- menu of the program modified
- bugs in Preferences screen fixed
- registration information screen added
- registration method modified
- other minor improvements/ changes

#### EasyTalk v1.25 (2003-08-01)

- main screen modified
- search function improved
- search indicator added
- menu of the program modified
- demo screen added
- other minor improvements/ changes

#### EasyTalk v1.15 (2003-07-01)

- full version released

NOTE: In case the program is updated all registered Users can download the updated version for **FREE** directly from the website where the program was ordered.

---

## TROUBLESHOOTING

### *Problem:*

The registration code is not working.

### *Solution:*

HotSyncID used to generate registration code is wrong (HotSyncID is case sensitive). To check what is your correct HotSyncID please start EasyTalk, open the menu of the program, choose Registration and check what is printed in Registration window under the line: HotSync ID. If it differs from the one specified during ordering of the program, send the request for new registration code to: [palmlink@gmx.net](mailto:palmlink@gmx.net)

---

### *Problem:*

The registration code is not working (my HotSyncID specified in the order of the program is correct).

### *Solution:*

Make sure that demo version of EasyTalk is removed from the device (it was observed that

sometimes for some unknown reasons, the demo version of EasyTalk is not deleted when the full version of the program is installed. This can cause problems during registration process). Delete the demo version of the program to solve the problem. If you are using any program which modifies/ enhances the system (e.g. Hacks, SilverScreen, ZLauncher, etc.) deactivate it before registering EasyTalk.

---

*Problem:*

When I try to change a language database in preferences screen, the following message is displayed: 'The database for chosen language does not exist'

*Solution:*

Either selected language database is not installed on your device or it is installed on the expansion memory card (MMC/SD/MemoryStick, etc). The language databases must be installed in device internal memory (RAM) otherwise the program will not be able to find them. The program itself (EasyTalk.prc or EasyTalk\_demo.prc file) can be installed on the expansion memory card (MMC/SD/MemoryStick, etc).

---

*Problem:*

I cannot find any place in the program to enter my registration code.

*Solution:*

This means that you are still using the demo version of the program (it is not possible to register the program in demo version because there is no place in demo version where registration code could be entered). To register the program you need to install the full version of EasyTalk (you can download it after logging into your account on the website where you ordered the program). When you start the full version for the first time, the program will ask for registration code.

---

## **TECHNICAL SUPPORT**

For technical support please contact us at: [palmlink@gmx.net](mailto:palmlink@gmx.net) . Please feel free to send any comments on EasyTalk.

---

## **DISCLAIMER**

This software is provided without warranty. We will not take responsibility for any form of damage or loss that occurs when/by using or not using this software.

---

Copyright (C) 2003 - 2004 PalmLink All Rights Reserved

---